

Woodfibre LNG Air Quality Monitoring Station Report for March 2026

April 30, 2026

Prepared for:
Woodfibre LNG General Partner Inc.

Prepared by:
Stantec Consulting Ltd.

Project/File:
123222160



Limitations and Sign-off

This document entitled Woodfibre LNG Air Quality Monitoring Station Report for March 2026 was prepared by Stantec Consulting Ltd. (“Stantec”) for the account of Woodfibre LNG General Partner Inc. (the “Client”) to support the Floatel Air Quality Monitoring and Mitigation Plan Rev. 7, January 28, 2026 for the Woodfibre LNG Project (the “Project”). In connection therewith, this document may be reviewed and used by the British Columbia Environmental Assessment Office (EAO) participating in the review process in the normal course of its duties. Except as set forth in the previous sentence, any reliance on this document by any other party or use of it for any other purpose is strictly prohibited. The material in it reflects Stantec’s professional judgment in light of the scope, schedule and other limitations stated in the document and in the contract between Stantec and the Client. The information and conclusions in the document are based on the conditions existing at the time the document was published and does not take into account any subsequent changes. In preparing the document, Stantec did not verify information supplied to it by the Client or others, unless expressly stated otherwise in the document. Any use which another party makes of this document is the responsibility and risk of such party. Such party agrees that Stantec shall not be responsible for costs or damages of any kind, if any, suffered by it or any other party as a result of decisions made or actions taken based on this document.

Prepared
by:

Signature

Dr. Kashif Choudhry, P.Eng. (BC, ON, SK),
Senior Atmospheric Engineer

Printed Name

Reviewed
by:

Signature

Dan Jarratt, EP, P.Eng. (AB, BC, YT)
Senior Atmospheric Engineer

Printed Name

Approved
by:

Signature

Adriana MacLeod, B.Sc.
Project Manager

Printed Name



Executive Summary

This report provides a summary of the ambient air quality monitoring data for March 2026 that was collected in fulfilment of the requirements established in the Floatel Air Quality Monitoring and Mitigation Plan (Rev 7, January 28, 2026) (Woodfibre LNG 2026). Table ES.1 below presents the monthly averages, ranges, and maximum values for key air contaminant concentrations measured during March 2026, along with additional information on number of days with air quality exceedances, number of days with trigger level exceedances and complaints received during this period. This report provides an overview of ambient air quality conditions and regulatory compliance actions taken during March 2026.

Table ES.1 March 2026 Air Quality Monitoring Station Summary

Air Contaminant	Units	Monthly Average	Monthly Range (Min - Max)
PM ₁ (24-hour average) ^a	µg/m ³	0.8	0.4 - 1.4
PM _{2.5} (24-hour average)	µg/m ³	6.8	4.6 - 9.7
PM ₁₀ (24-hour average)	µg/m ³	12.3	9.4 - 16.9
TSP (24-hour average) ^b	µg/m ³	15.0	10.5 - 30.6
NO ₂ (24-hour average)	ppb	11.8	6.7 - 17.3
NO ₂ (1-hour average)	ppb	11.8	1.0 - 38.9
SO ₂	March 3 – Apr 1, 2026	ppb	0.2
VOC as Hexane			<0.7 ^c
Number of Days with Air Quality Exceedances Recorded			None
Number of Days with Trigger Level Exceedances Recorded			None
Number of Complaints Received			None

Note:

- ^a PM₁ Monthly average and range is based on data collected from March 1 to March 13 - Aeroqual sampler was removed from operation on March 14.
- ^b TSP Monthly average and range are based on data collected from March 1 to March 15, and from March 29 to March 31. No 24-hour average valid data was collected from March 16 to March 28 due to a filter tape error.
- ^c Concentrations below the Reported Detection Limit (RDL) are indicated with a '<' symbol.



Table of Contents

Limitations and Sign-off	i
Executive Summary	ii
Acronyms / Abbreviations	v
1 Introduction	1
2 Key Components Assessed	3
2.1 Meteorology	3
2.2 Air Contaminants of Interest	3
2.2.1 Continuous Sampling.....	3
2.2.2 Passive Sampling	4
2.3 Air Quality Criteria	4
3 Instrument Summary	7
3.1 Continuous Monitoring of PM and NO ₂	7
3.2 Passive Monitoring of SO ₂ and VOC	7
4 Ambient Air Quality Monitoring Results	8
4.1 Continuous Monitoring of PM and NO ₂	8
4.2 Passive Monitoring of SO ₂ and VOC	10
4.3 Meteorology	10
5 Summary of Ambient Air Quality Monitoring Results	12
6 References	13

List of Tables

Table 2.1	Variables Measured at the Woodfibre LNG Site Meteorology Station.....	3
Table 2.2	Summary of 2020, 2025 and 2030 Canadian Ambient Air Quality Standards for the Contaminants of Potential Concern	4
Table 2.3	British Columbia Ambient Air Quality Objectives	5
Table 3.1	Summary of Instrumentation used at the Woodfibre LNG Air Quality Monitoring Station	7

List of Figures

Figure 1.1	Map of the Woodfibre LNG Site	2
------------	-------------------------------------	---



List of Appendices

Appendix A **Figures**

Appendix B **Data Tables**

Appendix C **DPM Monitoring and Health Risk for Off-Duty Floatel Residents**

Appendix D **Passive SO₂ and VOC Samples – Lab Analysis Report**



Acronyms / Abbreviations

AGAT	AGAT Laboratories
AQMS	Air Quality Monitoring Station
AQO	British Columbia Air Quality Objective(s)
BC	British Columbia
BC ENV	British Columbia Ministry of Environment and Climate Change Strategy (2017–2024)
BC ENVP	British Columbia Ministry of Environment and Parks (2024–Present)
CAAQS	Canadian Ambient Air Quality Standard(s)
CCME	Canadian Council of Ministers of the Environment
DPM	Diesel Particulate Matter
EAC	Environmental Assessment Certificate
EAO	British Columbia Environmental Assessment Office
Floatel(s)	Marine-based work camp, associated facilities and mooring infrastructure dedicated to housing up to 705 and 735 workers (including crew), Floatel #1 and Floatel #2, respectively, during the Construction and Commissioning of the Project
FAQMMP	Floatel Air Quality Monitoring and Mitigation Plan
NO ₂	Nitrogen Dioxide
PM	Particulate Matter
PM ₁	Fine Particulate Matter (less than 1.0 microns (µm) in aerodynamic diameter)
PM _{2.5}	Fine Particulate Matter (less than 2.5 microns (µm) in aerodynamic diameter)
PM ₁₀	Particulate Matter (less than 10 microns (µm) in aerodynamic diameter)
QA/QC	Quality Assurance and Quality Control
SO ₂	Sulphur Dioxide
TSP	Total Suspended Particulate (less than 100 microns (µm) in aerodynamic diameter)
VOC	Volatile Organic Compounds
Woodfibre LNG	Woodfibre LNG General Partner Inc.



1 Introduction

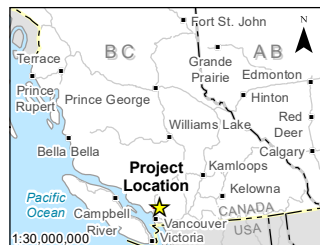
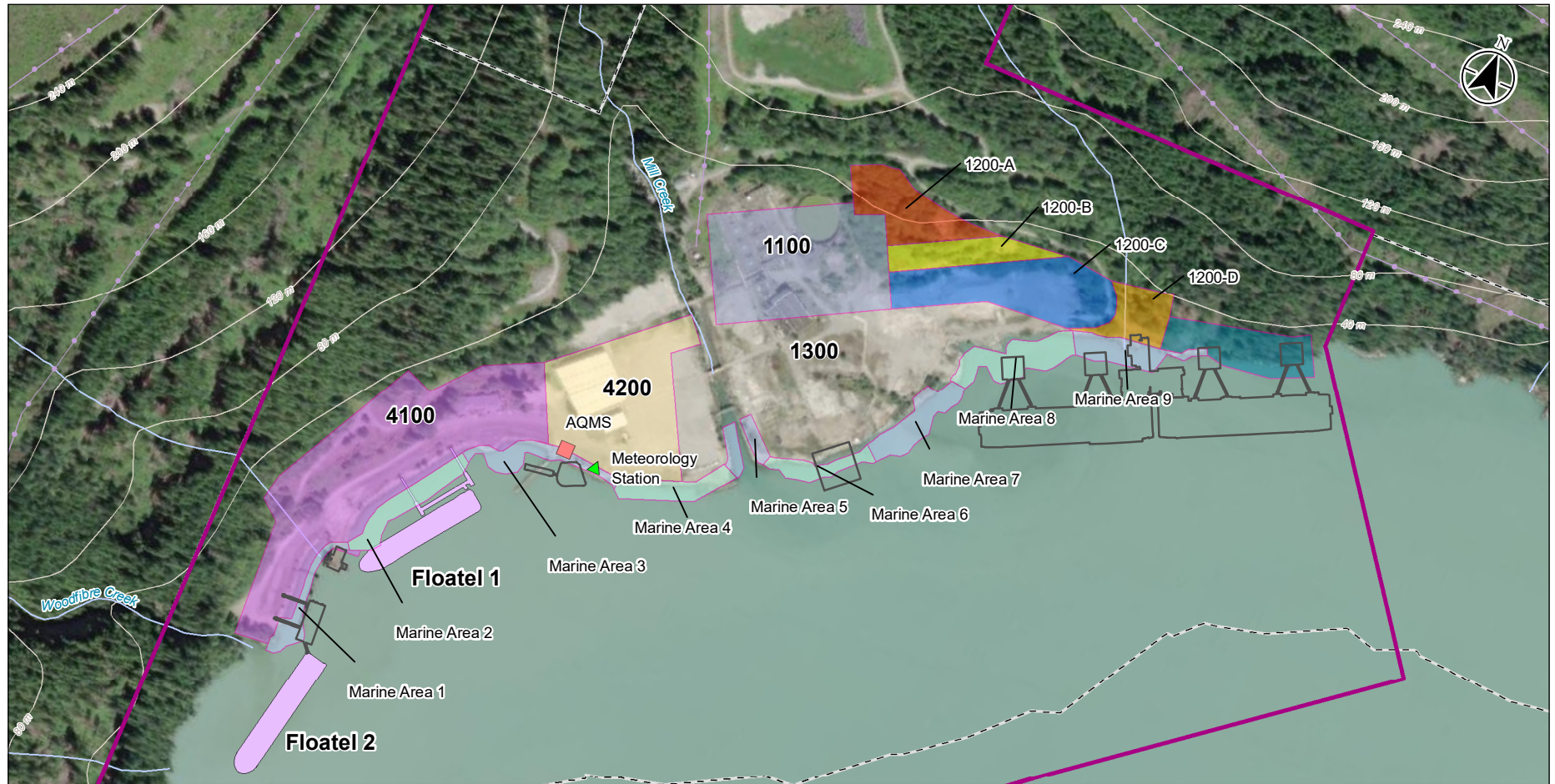
Woodfibre LNG General Partner Inc. (Woodfibre LNG) is developing the Woodfibre Liquefied Natural Gas Project (the Project) at the former Woodfibre Pulp Mill site, approximately seven kilometres southwest of Skwxwú7mesh (Squamish), British Columbia (BC). To support onsite ambient air quality monitoring, Stantec Consulting Ltd. (Stantec) prepared the Floatel Air Quality Monitoring and Mitigation Plan (FAQMMP; Rev 7, January 28, 2026) on behalf of Woodfibre LNG (Woodfibre LNG 2026). The FAQMMP has been updated to satisfy the requirements of Conditions 35 and 37 of the Environmental Assessment Certificate (EAC) Amendment #4 (EAO 2025) specific to air quality monitoring. The previous version of the FAQMMP was developed to satisfy the requirements of Condition 30 of EAC Amendment #3 (EAO 2023), which was rescinded with the issuance of Amendment #4 on November 6, 2025. The objective of the monitoring is to support the protection of off-duty workers accommodated on the Floatels during the Project's construction phase. Further details regarding the purpose, duration, and compliance framework are available in the FAQMMP Rev 7 January 28, 2026 (Woodfibre LNG 2026).

The air quality monitoring station (AQMS) continuously measures PM₁, PM_{2.5}, PM₁₀, TSP, and NO₂ concentrations, along with passive sampling and analysis for SO₂ and VOCs. Data processing, quality assurance, and quality control (QA/QC) of the air quality monitoring equipment are performed, and the data presented in this monthly report is based on a Level 0 data validation as described by the British Columbia Field Sampling Manual – Part B (BC ENVP 2020, Ministry of Environment & Parks (BC ENVP)).

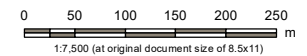
The location of the AQMS (UTM Easting 481,569 m and Northing 5,501,374 m, NAD83 datum, zone 10U) is adjacent to the existing meteorology station (UTM Easting 481,610 m and Northing 5,501,369 m, NAD83 datum, zone 10U) currently in operation at the Woodfibre LNG site as recommended in the FAQMMP. Figure 1.1 provides a map of the Woodfibre LNG site. This March 2026 monthly air quality report provides data on air quality and meteorology conditions monitored at the Woodfibre LNG Project site close to the Floatels (Floatel #1 and Floatel # 2). These monthly reports document ambient air quality trends, address potential issues, and support the protection of off-duty workers residing in the Floatels.



S:\1232\projects\123222160\figures\supplereports\human_health\fig_1_123222160_float_monitoring.mxd Revised: 2026-03-02 By: jsparker



- Transmission Line
- Topographic Contour
- Watercourse
- Municipal Boundary
- Supporting Infrastructure
- Floatel
- Certified Project Area
- Meteorology Station
- AQMS



Project Location: Woodfibre, British Columbia
 Project Number: 123222160
 Prepared by: JPOUCHER on 20250103
 Requested by: KCHUEN on 20250103
 Checked by: YMA on 20240828
 Client/Project/Report:

Woodfibre LNG
 Figure No.
1.1
 Title
Map of Woodfibre LNG Site

Disclaimer: Stantec assumes no responsibility for data supplied in electronic format. The recipient accepts full responsibility for verifying the accuracy and completeness of the data. The recipient releases Stantec, its officers, employees, consultants and agents, from any and all claims arising in any way from the content or provision of the data.

2 Key Components Assessed

Two key sets of measurements are reported: a) meteorology data, including ambient temperature, wind speed and direction, relative humidity, barometric pressure, and total rainfall, and b) ambient concentrations of air contaminants measured at the AQMS.

2.1 Meteorology

Meteorology data supporting the Woodfibre LNG AQMS are acquired from the nearby Woodfibre LNG meteorology station. This meteorology data supports the long-term ambient air quality monitoring program. The meteorological variables measured at the station are listed in Table 2.1. The meteorology data is summarized each year in a technical data report (TDR). The annual meteorology TDR provides data summaries and trends for wind speed and direction, air temperature, rainfall, relative humidity and barometric pressure and compares it to the climate data collected at the Squamish Airport station that is operated by Environment and Climate Change Canada (ECCC).

Table 2.1 Variables Measured at the Woodfibre LNG Site Meteorology Station

Variables	Units
Wind Speed	m/s
Wind Direction	Degrees
Air Temperature	°C
Rainfall	mm
Relative Humidity	%
Barometric Pressure	hPa

2.2 Air Contaminants of Interest

The air contaminants being measured are described below according to the type of monitoring.

2.2.1 Continuous Sampling

- Fine particulate matter with aerodynamic diameter less than or equal to 1.0 microns (PM₁)
- Fine particulate matter with aerodynamic diameter less than or equal to 2.5 microns (PM_{2.5})
- Particulate matter with aerodynamic diameter less than or equal to 10 microns (PM₁₀)
- Total suspended particulate (TSP) with aerodynamic diameter less than or equal to 100 microns
- Nitrogen dioxide (NO₂)



2.2.2 Passive Sampling

- Sulphur dioxide (SO₂)
- Volatile organic compounds (VOCs)

2.3 Air Quality Criteria

The air contaminants monitored at the AQMS, along with their corresponding Canadian Ambient Air Quality Standards (CAAQS) (CCME 2025) and British Columbia Air Quality Objectives (BC AQO) (BC ENVP 2025) regulatory criteria, are presented in Table 2.2 and Table 2.3, respectively.

Table 2.2 Summary of 2020, 2025 and 2030 Canadian Ambient Air Quality Standards for the Contaminants of Potential Concern

Pollutant	Averaging Period	Concentration ^a				
		(µg/m ³) ^{b,c}			(ppbv) ^d	
		2020	2025	2030	2020	2025
Nitrogen Dioxide (NO ₂)	1-hour ^e	113	79	—	60	42
	Annual ^f	32	23	—	17.0	12.0
Sulphur Dioxide (SO ₂)	1-hour ^g	183	170	—	70	65
	Annual ^h	13	10.4	—	5.0	4.0
Fine Particulate Matter (PM _{2.5})	24-hour ⁱ	27	— ^j	23	—	—
	Annual ^k	8.8	— ^j	8.0	—	—

Notes:

^a Canadian Ambient Air Quality Standards (CCME 2025) for 2020, 2025 and 2030.

^b µg/m³ is the mass of the substance in micrograms per cubic meter of air.

^c Standard conditions of 25°C and 101.325 kPa are used to convert from µg/m³ to ppbv.

^d ppbv is the volume of the substance (parts) per billion volumes of air.

^e The 3-year average of the annual 98th percentile of the daily maximum 1-hour average concentration.

^f The average over a single calendar year of all 1-hour average concentrations.

^g The 3-year average of the annual 99th percentile of the daily maximum 1-hour average concentrations.

^h The average over a single calendar year of all 1-hour average concentrations.

ⁱ The 3-year average of the annual 98th percentile of the daily 24-hour average concentrations.

^j The 2020 CAAQS for PM_{2.5} remains applicable through 2029. The updated 2030 CAAQS have been published by CCME (24-hour = 23 µg/m³; annual = 8.0 µg/m³) but do not come into effect until 2030.

^k The 3-year average of the annual average of the daily 24-hour average concentrations.



Woodfibre LNG Air Quality Monitoring Station Report for March 2026

Section 2: Key Components Assessed

April 30, 2026

Table 2.3 British Columbia Ambient Air Quality Objectives

Pollutant	Averaging Period	Air Quality Objective ^a	
		$\mu\text{g}/\text{m}^3$ ^{b,c}	ppbv ^d
Nitrogen Dioxide (NO ₂)	1-hour ^e	113	60
	Annual ^f	32	17
Sulphur Dioxide (SO ₂)	1-hour ^g	170	65
	Annual ^h	10.5	4
Fine Particulate Matter (PM _{2.5})	24-hour ⁱ	25	—
	Annual ^j	8.0	—
Particulate Matter (PM ₁₀)	24-hour	50	—
Total Suspended Particulate (TSP)	24-hour	120	—
	Annual ^k	60	—

Notes:

- ^a British Columbia Air Quality Objectives (BC ENVP 2025).
- ^b $\mu\text{g}/\text{m}^3$ is the mass of the substance in micrograms per cubic meter of air.
- ^c Standard conditions of 25°C and 101.325 kPa are used to convert from $\mu\text{g}/\text{m}^3$ to ppbv.
- ^d ppbv is the volume of the substance (parts) per billion volumes of air.
- ^e Achievement based on annual 98th percentile of daily 1-hour average maximum (D1HM), averaged over three consecutive years.
- ^f Achievement based on annual average of 1-hour average concentrations over one year.
- ^g Achievement based on annual 99th percentile of daily 1-hour average maximum (D1HM), averaged over three consecutive years.
- ^h Achievement based on annual average of 1-hour concentrations over one year.
- ⁱ Achievement based on annual 98th percentile of daily average, averaged over one year.
- ^j Achievement based on annual average, averaged over one year.
- ^k Based on geometric mean.

The particle sizes for diesel particulate matter (DPM) mostly fall within the range of 0.1 to 0.25 μm , with approximately 92% of particles emitted from diesel engines being less than 1.0 μm in diameter (PM₁) (NTP, 2021). Floatel # 2 arrived on site on November 27, 2025, and occupancy began on December 9, 2025. Diesel power generators were used onboard Floatel #2 until shore power became available on February 25, 2026. There are currently no CAAQS or BC AQO established for DPM. The measured PM₁ concentrations (as a conservative indicator without distinguishing contributions from sources such as diesel combustion exhaust, biomass combustion, or gasoline emissions to measure DPM exposure) will therefore be evaluated against the recommended occupational exposure limit of 20 $\mu\text{g}/\text{m}^3$ (CAREX Canada, 2020), based on a 10-hour averaging period consistent with the construction work shift for the duration of diesel generator operation.



Woodfibre LNG Air Quality Monitoring Station Report for March 2026

Section 2: Key Components Assessed

April 30, 2026

In addition to comparing measured concentrations against the applicable BC AQOs, project-specific trigger levels have been established to provide early warnings of potential air quality concerns. These trigger levels are set at two-thirds of the BC AQOs and are used to notify the project team when elevated concentrations are being recorded, prompting mitigation actions if needed. The project-specific trigger levels are:

- 16.7 $\mu\text{g}/\text{m}^3$ for 24-hour average $\text{PM}_{2.5}$
- 33.3 $\mu\text{g}/\text{m}^3$ for 24-hour average PM_{10}
- 80 $\mu\text{g}/\text{m}^3$ for 24-hour average TSP
- 40 ppb for 1-hour average NO_2

For PM_{10} (DPM), the project uses a proactive approach with two trigger levels based on an 8-hour average:

- Level 1: 8-hour average - 15 $\mu\text{g}/\text{m}^3$ (3/4 of the CAREX Canada, 2020)
- Level 2: 8-hour average - 20 $\mu\text{g}/\text{m}^3$ (recommended occupational exposure limit by CAREX Canada, 2020)

The passive sampling of SO_2 and total VOCs allows for monthly and annual concentration values, rather than 1-hour and daily concentrations. There are no applicable monthly BC AQO for SO_2 and VOC but there is an annual BC AQO for SO_2 to compare the monitoring results to. The monthly trigger limit for the passive monitoring of SO_2 and VOC were introduced in Q4 2025 and are:

- 5 ppb for monthly passive SO_2
- > 15 times of the previous monthly passive VOC



3 Instrument Summary

The AQMS is currently being operated to measure the ambient concentrations of the air contaminants mentioned above. The instrumentation used to monitor ambient air quality at the AQMS is summarized in Table 3.1.

The BAM PM_{2.5} sampler was unable to collect a valid 24-hour average sample on March 13, 2026, due to a data gap from 07:00 to 15:00. The BAM PM₁₀ sampler was unable to collect valid data on March 14, 2026, from 06:00 to 11:00. The BAM TSP sampler was unable to collect valid samples from March 16 at 11:00 to March 28, 2026, at 07:00. The missing hourly PM_{2.5}, PM₁₀, and TSP data correspond to periods when the BAM samplers were unable to collect samples due to a filter tape break error.

PM₁ monitoring instrument (Aeroqual AQS1) was removed from operation on March 14, 2026.

Passive sampling of SO₂ and VOCs uses AGAT's Passive Sampler system. The Woodfibre LNG personnel exchange the monthly samples and submit them to AGAT for laboratory analysis.

Table 3.1 Summary of Instrumentation used at the Woodfibre LNG Air Quality Monitoring Station

Parameter	Instrumentation
PM ₁	Aeroqual AQS1 Air Quality Monitor
PM _{2.5} , PM ₁₀ , and TSP	Met One Instruments BAM 1020 Beta Attenuation Mass Monitors
NO ₂	Thermo Fisher Scientific – Model 42iQ (NO-NO ₂ -NO _x) Analyzer
SO ₂ and total VOCs	AGAT's Passive Sampler system

3.1 Continuous Monitoring of PM and NO₂

Particulate matter (PM_{2.5}, PM₁₀, and TSP) was continuously monitored following the Standard Operating Procedure for the Continuous Measurements of Ambient PM Using a Beta Attenuation Monitor (Reference No: SOP-05a). The NO₂ concentrations were continuously monitored following the Standard Operating Procedure for the Continuous Measurement of Ambient NO_x (Reference No: SOP-03) in Part B1 of the British Columbia Field Sampling Manual (BC ENVP 2020).

3.2 Passive Monitoring of SO₂ and VOC

The SO₂ and VOC ambient concentrations were monitored following the Standard Operating Procedure for the Passive/Diffusive Method of Air Sample Collection (Reference No: SOP-07) in Part B1 of the British Columbia Field Sampling Manual (BC ENVP 2020).



4 Ambient Air Quality Monitoring Results

The measured data presented for passive and continuous monitoring includes a) ambient air quality data collected at the AQMS (Appendix A: Figure A.1 to Figure A.11; Appendix B: Table B.1), and b) meteorology data acquired from the Woodfibre LNG meteorology station (Appendix A: Figure A.12 to Figure A.18; Appendix B: Table B.2).

4.1 Continuous Monitoring of PM and NO₂

A summary of the hourly ambient air monitoring results for PM_{2.5}, PM₁₀, TSP, and NO₂ for March 2026 is presented in Appendix A, Figure A.1 to Figure A.5, along with the corresponding regulatory criteria and comparisons with Langdale Elementary (BC ENVP 2026a) and Squamish Elementary (BC ENVP 2026b) regional ambient air quality monitoring stations. Langdale Elementary and Squamish Elementary were selected as reference points due to their relative proximity to the Woodfibre LNG construction site and the availability of relevant ambient air quality data. The BC ENVP air quality monitoring station at Langdale Elementary provides measurements for PM_{2.5}, PM₁₀, NO₂, and SO₂, while Squamish Elementary monitors PM_{2.5}, NO₂, and SO₂. There are no BC ENVP ambient air quality monitoring stations near the Woodfibre LNG project site that measures TSP and VOCs. PM₁ was also monitored as a conservative indicator of DPM during the operation of the onboard generators on Floatel # 2 (Appendix A, Figure A.6).

Shore power was established on February 25, 2026. Since Floatel #2 began operating on shore power, two interruptions occurred: one on March 8 between 23:45 and 23:59, and another on March 11 between 21:15 and 21:25. The diesel generators were used during shore power interruptions. The diesel generators start up automatically to ensure critical utilities are functioning. PM₁ monitoring continued until March 14, after the diesel generator use ended, following the same approach used before the Floatel #2 arrived. PM₁ monitoring was discontinued on March 14 in alignment with the Floatel Air Quality Monitoring and Mitigation Plan (Woodfibre LNG, 2026), which specifies that DPM-related monitoring is conducted during diesel generator use, with subsequent monitoring focused on PM_{2.5}, PM₁₀, TSP, and NO₂. There are no BC ENVP ambient air quality monitoring stations in the region that measure PM₁. The measured PM₁ concentrations were compared to the recommended occupational exposure limit of 20 µg/m³ from CAREX Canada (2020), based on a 10-hour work shift. A comparison of DPM monitoring results to applicable health-based benchmarks, used to evaluate the potential health risk to off-duty workers residing on Floatel #1 and Floatel #2, is presented and discussed in Appendix C.



Woodfibre LNG Air Quality Monitoring Station Report for March 2026

Section 4: Ambient Air Quality Monitoring Results

April 30, 2026

During March 2026, the hourly PM_{2.5} concentrations ranged from 0¹ to 26 µg/m³, the hourly PM₁₀ concentrations ranged from 5 to 38 µg/m³, the hourly TSP concentrations ranged from 5 to 76 µg/m³, and the hourly NO₂ concentrations ranged from 1.0 to 38.9 ppb. The hourly results for the NO₂ concentration monitoring during March were less than the BC AQO regulatory standard of 60 ppb. The hourly air quality objective regulatory standard for NO₂ is based on the 3-year average of the annual 98th percentile of the daily maximum 1-hour average concentration (CCME 2025; BC ENVP 2025).

During March 2026, the hourly PM₁ concentrations ranged from 0.1 to 4.7 µg/m³. The 10-hour rolling average ranged from 0.3 to 2.2 µg/m³, the 24-hour average ranged from 0.4 to 1.4 µg/m³, and the monthly average was 0.8 µg/m³, based on the data collected from March 1 to March 14, 2026 (Appendix A, Figure A.6; Appendix B: Table B.1). The 10-hour rolling and 24-hour average PM₁ concentrations for March 2026 were below the CAREX Canada recommended occupational exposure limit of 20 µg/m³.

Similarly, a summary of the daily (24-hour average) ambient air quality monitoring results for PM_{2.5}, PM₁₀, TSP, and NO₂ for March 2026 is presented in Appendix B: Table B.1 and Figure A.7 to Figure A.11 (Appendix A), with corresponding regulatory criteria and comparisons with Langdale Elementary and Squamish Elementary regional air quality monitoring stations.

During March 2026, the 24-hour average PM_{2.5} concentrations ranged from 4.6 to 9.7 µg/m³, 24-hour average PM₁₀ concentrations ranged from 9.4 to 16.9 µg/m³, 24-hour average TSP concentrations ranged from 10.5 to 30.6 µg/m³, and 24-hour average NO₂ concentrations ranged from 6.7 to 17.3 ppb. The 24-hour average PM_{2.5}, PM₁₀ and NO₂ concentrations recorded at the Woodfibre LNG AQMS site were generally higher than those observed at the Langdale Elementary and Squamish Elementary regional air quality monitoring stations, which is expected given the proximity of the AQMS site to active construction activities. The 24-hour BC AQO regulatory standard for PM_{2.5} is 25 µg/m³, based on the 3-year average of the annual 98th percentile of the daily 24-hour average concentrations (CCME 2025; BC ENVP 2025). The 24-hour regulatory standards for PM₁₀ and TSP monitoring are 50 µg/m³ and 120 µg/m³, respectively. There is currently no 24-hour BC AQO for NO₂. The 24-hour results for PM_{2.5}, PM₁₀, and TSP were less than the BC AQO regulatory standards of 25 µg/m³, 50 µg/m³, and 120 µg/m³, respectively, and no air quality non-conformances were recorded for these contaminants of interest.

The available data for March 2026 alone does not cover a full year and is therefore not applicable for comparison with the annual regulatory standards set for PM_{2.5}, TSP, and NO₂ by BC AQO and CAAQS. The March 2026 monthly average PM_{2.5} concentration is 6.8 µg/m³. The combined average from January to March 2026 is 6.8 µg/m³ and is less than the BC AQO and CAAQS annual regulatory standards of 8.0 and 8.8 µg/m³, respectively. However, this three-month average does not represent a yearly valid average for comparison with these regulatory standards.

¹ The BAM 1020 instrument recording the PM_{2.5} concentrations may occasionally report slightly negative values when they are very low. Both the BCFSM (BC ENVP 2020) and the National Air Pollution Surveillance (NAPS, CCME 2019) program provide data validation criteria for PM_{2.5} measurements: values between -3 and 0 µg/m³ are adjusted to 0, while values below -3 µg/m³ are flagged as invalid. This approach has been followed for PM_{2.5} data validation program.



Similarly, the March monthly average TSP concentration is 15.0 µg/m³. The combined average TSP concentration from January to March 2026 is 14.0 µg/m³, less than the BC AQO annual regulatory standard of 60 µg/m³. The monthly average NO₂ concentration in March 2026 is 11.8 ppb. The combined average NO₂ concentration from January to March 2026 is 12.9 ppb, less than the BC AQO (17 ppb) and greater than the CAAQS annual regulatory standard (12 ppb).

The NO₂ project-specific trigger level is based on a 1-hour average, while the PM_{2.5}, PM₁₀, and TSP trigger levels are based on 24-hour averages. None of the measured NO₂, PM_{2.5}, PM₁₀, or TSP concentrations were greater than the project-specific trigger levels of 40 ppb, 16.7 µg/m³, 33.3 µg/m³, and 80 µg/m³, respectively, at the on-site AQMS during March 2026. The PM₁ project-specific trigger levels include an 8-hour Level 1 trigger of 15 µg/m³ and an 8-hour Level 2 trigger of 20 µg/m³. The PM₁ measurements during March 2026 remained less than both the project-specific trigger limits. No air quality complaints were received from the Floatel #1 and Floatel #2 residents during March 2026.

4.2 Passive Monitoring of SO₂ and VOC

The passive sample media for SO₂ and total VOCs were swapped on April 1, 2026. This report includes the results for samples collected for the exposure period from March 3, 2026, to April 1, 2026. The laboratory analysis report is presented in Appendix D.

The results for SO₂ and VOC samples show exposure-period average ambient SO₂ concentration of 0.2 ppb and an ambient average VOC concentration of <0.7 ppb. The instrument-reported detection limits (RDL) are 0.2 ppb and 0.7 ppb, respectively. In comparison, the regional monitoring stations reported ambient SO₂ concentrations comparable to, or slightly higher than, those monitored at the AQMS in March 2026, with Squamish Elementary reporting a monthly average of 0.1 ppb and Langdale Elementary recording 1.0 ppb. The measured SO₂ concentration for March 2026, 0.2 ppb, was less than the trigger limit, 5 ppb. In January 2026 and February 2026, the recorded SO₂ concentrations were below 0.2 ppb, while the VOC concentrations were 5.2 ppb and 6.3 ppb, respectively. The measured VOC concentration for March 2026, <0.7 ppb was less than the trigger limit (> 15 times of the previous monthly passive VOC).

4.3 Meteorology

A summary of the meteorology conditions during March 2026 is presented in Appendix A, Figure A.12 to Figure A.18 and Appendix B, Table B.2. Daily average and maximum wind speeds are shown in Figure A.12. The highest hourly average wind speed was recorded on March 24, 2026, at 16:00 (15.5 m/s), and similarly the highest 24-hour average wind speed also occurred on March 24, 2026 (3.4 m/s). Figure A.13 presents a wind rose illustrating wind direction and speed for March 2026 at the Woodfibre LNG meteorology station. The prevailing wind direction is from the northwest. Additionally, Figure A.14 includes four wind roses capturing specific time intervals: between 0:00 and 8:00 hours, 9:00 and 12:00 hours, 13:00 and 19:00 hours, and 20:00 and 00:00 hours for March 2026.



Woodfibre LNG Air Quality Monitoring Station Report for March 2026

Section 4: Ambient Air Quality Monitoring Results

April 30, 2026

The daily ambient air temperature data is presented in Figure A.15. The maximum hourly air temperature of 14.0°C was recorded on March 20, 2026, at 10:00, while the minimum hourly temperature of 0.0°C occurred on March 30, 2026, at 06:00. The monthly average temperature for March 2026 was 5.9°C.

The daily and total monthly rainfall data, presented in Figure A.16 and Table B.2, show that the highest single-day rainfall of 64.2 mm occurred on March 19, 2026. The total rainfall for March 2026 was 388.4 mm.

The daily average relative humidity ranged from 60.6% to 100% in March 2026. The daily minimum, maximum, and average relative humidity values recorded at the Woodfibre LNG station are presented in Figure A.17 and Table B.2. The daily average barometric pressure values ranged from 1,007.5 hPa to 1,032.9 hPa in March 2026, with a monthly average of 1,018.9 hPa. The daily minimum, maximum, and average barometric pressure values are presented in Figure A.18 and Table B.2.



5 Summary of Ambient Air Quality Monitoring Results

The daily (24-hour) ambient air quality monitoring results for March 2026 indicate that the PM_{2.5}, PM₁₀, and TSP concentrations remained less than the BC AQO regulatory standards. The hourly NO₂ concentrations measured were less than the BC AQO regulatory standard. The measured PM₁ concentrations, used as a conservative indicator of DPM, remained less than the CAREX Canada-recommended occupational exposure limit. The meteorological data, including wind speed, temperature, and rainfall, support accurate interpretation of the ambient air quality monitoring trends. No air quality complaints from Floatel 1 and Floatel #2 residents were received during March 2026.



6 References

- BC ENVP. 2020. *The British Columbia Field Sampling Manual: Part B: Air and Air Emissions Testing*. Retrieved April 9, 2026, from Government of British Columbia: Ministry of Environment and Climate Change Strategy (BC ENV, 2017-2024); now Ministry of Environment & Parks (BC ENVP, 2024–present); Environmental Protection & Sustainability; Research, Monitoring and Reporting; Monitoring; B.C. Field Sampling Manual Web Site:
https://www2.gov.bc.ca/assets/gov/environment/research-monitoring-and-reporting/monitoring/emre/manuals/field-sampling-manual/bc_field_sampling_manual_part_b.pdf
- BC ENVP. 2025. British Columbia Ambient Air Quality Objectives. Retrieved April 9, 2026, from Government of British Columbia; Environment and Climate Change Strategy (BC ENV, 2017-2024); now Ministry of Environment & Parks (BC ENVP, 2024–present); Environmental Protection and Sustainability; Air, Land, and Water; Air; Air Quality Management; Regulatory Framework, Objectives and Standards Web Page:
<https://www2.gov.bc.ca/gov/content/environment/air-land-water/air/air-quality-management/regulatory-framework/objectives-standards> and
https://www2.gov.bc.ca/assets/gov/environment/air-land-water/air/factsheets/bc_aq_objectives_2025.pdf
- BC ENVP. 2026a. Langdale Elementary - British Columbia Ambient Air Data Archive Website. Retrieved April 9, 2026; https://envistaweb.env.gov.bc.ca/StationReportFast.aspx?ST_ID=86
- BC ENVP. 2026b. Squamish Elementary - British Columbia Ambient Air Data Archive Website. Retrieved April 9, 2026; https://envistaweb.env.gov.bc.ca/StationReportFast.aspx?ST_ID=491
- CAREX Canada. 2020. Setting an occupational exposure limit for diesel engine exhaust in Canada: Challenges and opportunities; Retrieved April 9, 2026,
https://www.carexcanada.ca/CAREXCanada_DEE_OEL_REPORT_2019.pdf.
- CCME. 2019. NAPS - Ambient Air monitoring and Quality Assurance and control Guidelines. National Air Pollution Surveillance Program (NAPS), Canadian Council of Ministers of the Environment (CCME); Retrieved April 9, 2026, https://ccme.ca/en/res/ambientairmonitoringandqa-qcguidelines_ensecure.pdf.
- CCME. 2025. Canadian Ambient Air Quality Standards (CAAQS). Retrieved April 9, 2026, from Canadian Council of Ministers of the Environment (CCME); Canada's Air Web Site: <https://ccme.ca/en/air-quality-report#slide-7>
- EAO. 2023. *Amendment #3 for the Woodfibre LNG Project (Project) Environmental Assessment Certificate #E15-02*. Victoria, British Columbia: British Columbia Environmental Assessment Office (EAO).



Woodfibre LNG Air Quality Monitoring Station Report for March 2026

Section 6: References

April 30, 2026

EAO. 2025. *Amendment #4 for the Woodfibre LNG Project (Project) Environmental Assessment Certificate #E15-02*. Victoria, British Columbia: British Columbia Environmental Assessment Office (EAO).

NTP. 2021. Diesel Exhaust Particulates, 15th Report on Carcinogens, U.S. Department of Health and Human Services, National Toxicology Program (NTP); Retrieved April 9, 2026, <http://ntp.niehs.nih.gov/go/roc> .

Woodfibre LNG. 2026. Floatel Air Quality Monitoring and Mitigation Plan, Woodfibre LNG Project: Rev 7 (January 28, 2026). Vancouver, British Columbia: Woodfibre LNG General Partner Inc. (Woodfibre LNG).



Appendices



Appendix A Figures

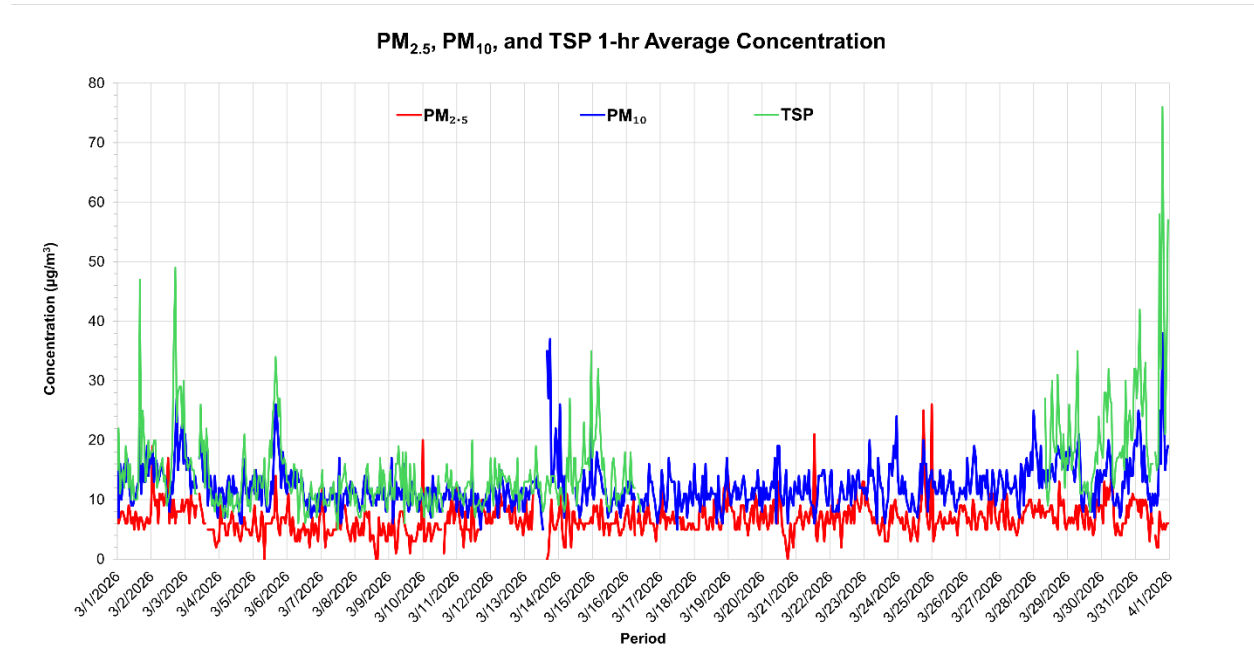


Woodfibre LNG Air Quality Monitoring Station Report for March 2026

Appendix A: Figures

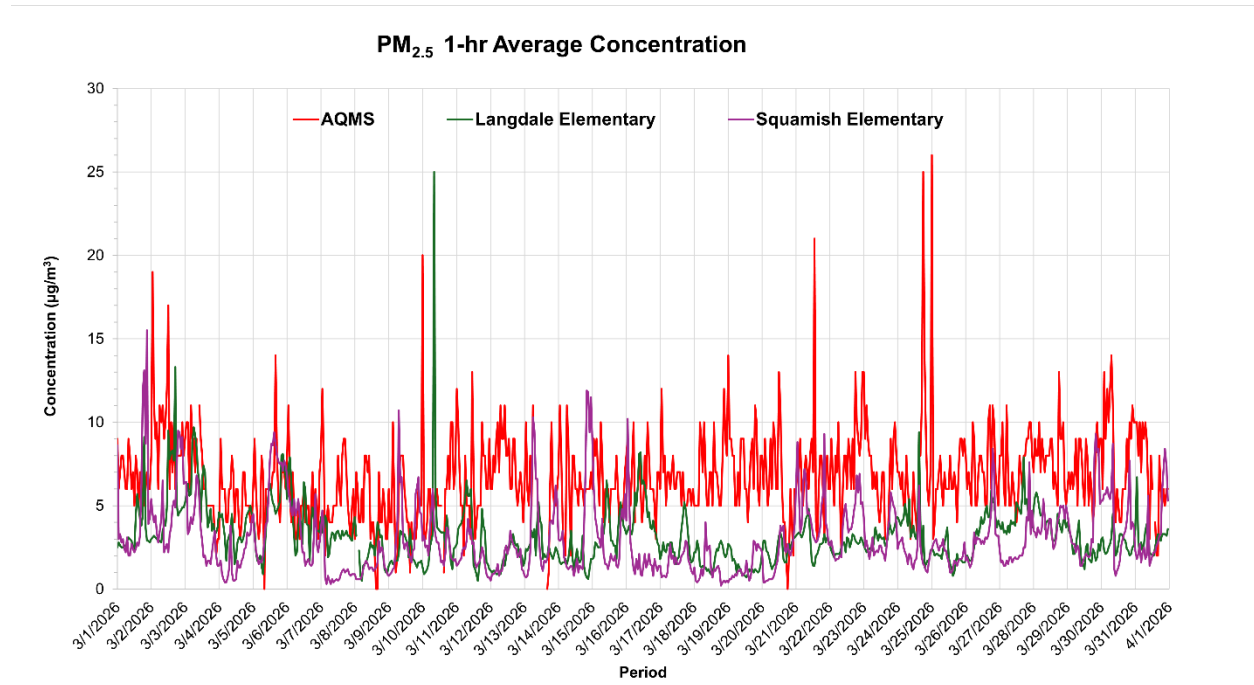
April 30, 2026

Figure A.1 Hourly PM Concentrations Recorded at the AQMS during March 2026



Note: Missing hourly PM_{2.5} data (March 13 at 07:00 to 15:00), PM₁₀ data (March 14 at 06:00 to 11:00), and TSP data (March 16 at 11:00 to March 28 at 07:00) is due to a filter tape error.

Figure A.2 Hourly PM_{2.5} Concentrations Recorded at the AQMS, and the Langdale and Squamish Regional Air Quality Stations during March 2026



Note: Missing hourly PM_{2.5} data (March 13 at 07:00 to 15:00) is due to a filter tape error.

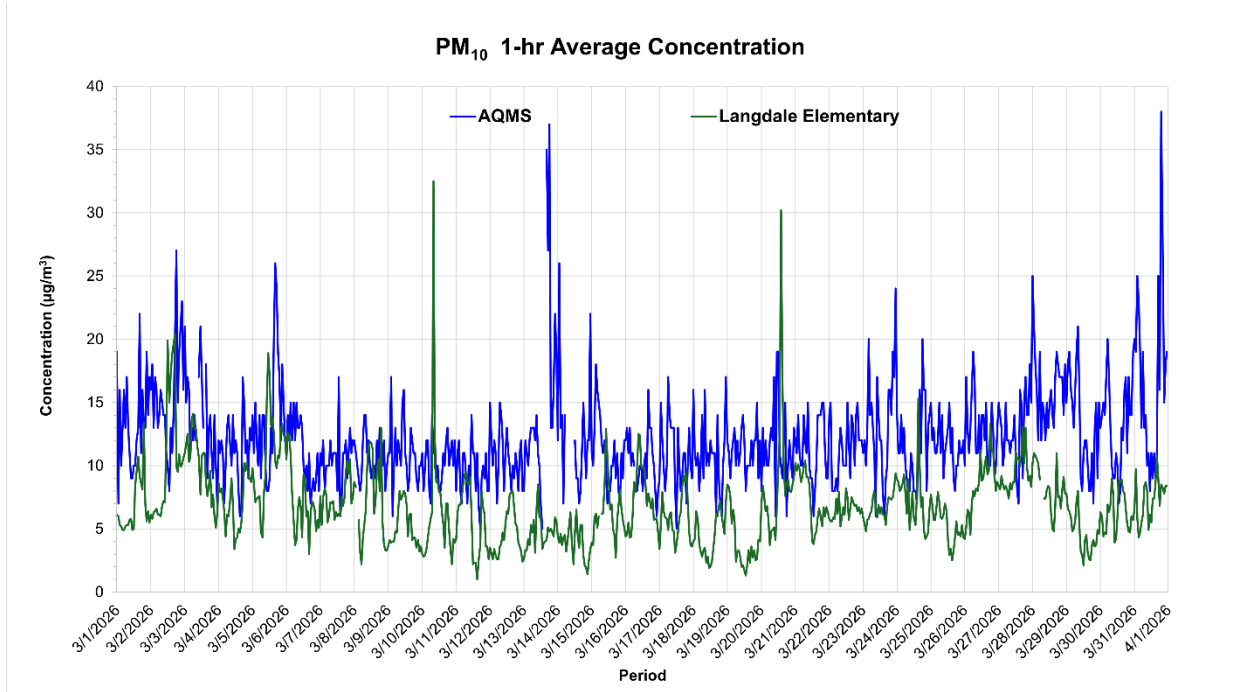


Woodfibre LNG Air Quality Monitoring Station Report for March 2026

Appendix A: Figures

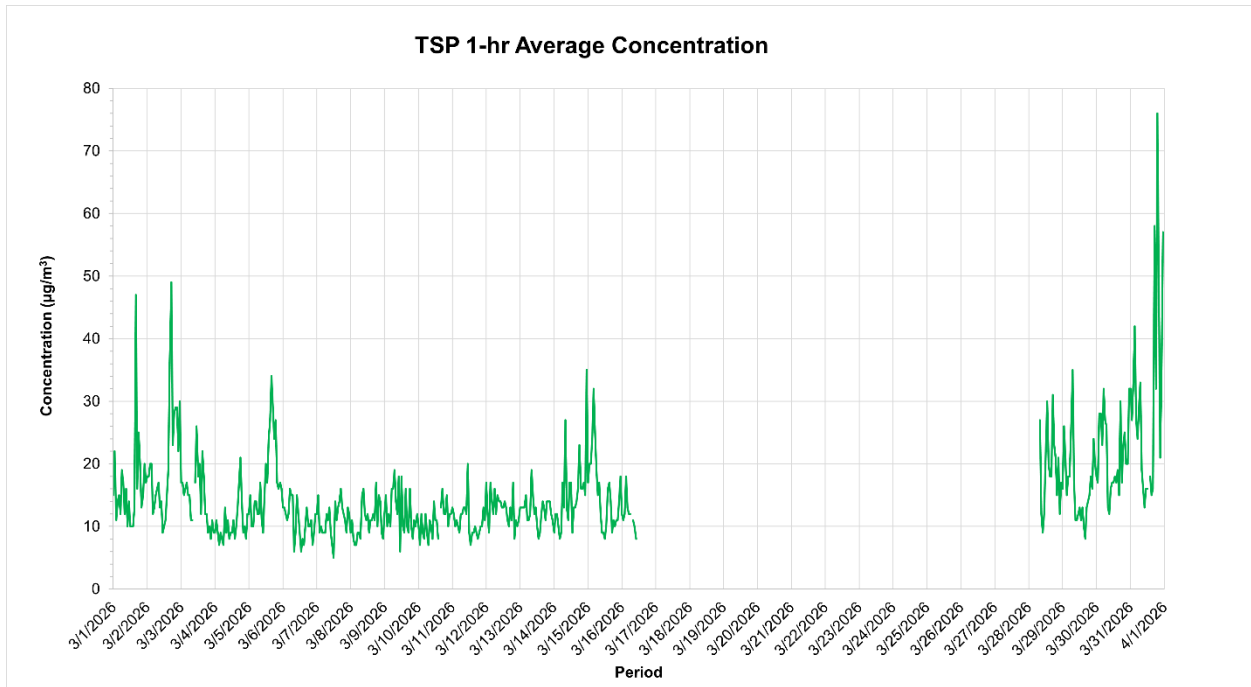
April 30, 2026

Figure A.3 Hourly PM₁₀ Concentrations Recorded at the AQMS, and the Langdale Regional Air Quality Station during March 2026



Note: Missing hourly PM₁₀ data (March 14 at 06:00 to 11:00) is due to a filter tape error.

Figure A.4 Hourly TSP Concentrations Recorded at the AQMS during March 2026



Note: Missing hourly TSP data (from March 16 at 11:00 to March 28 at 07:00) is due to a filter tape error.



Woodfibre LNG Air Quality Monitoring Station Report for March 2026

Appendix A: Figures

April 30, 2026

Figure A.5 Hourly NO₂ Concentrations Recorded at the AQMS, and the Langdale and Squamish Regional Air Quality Stations during March 2026

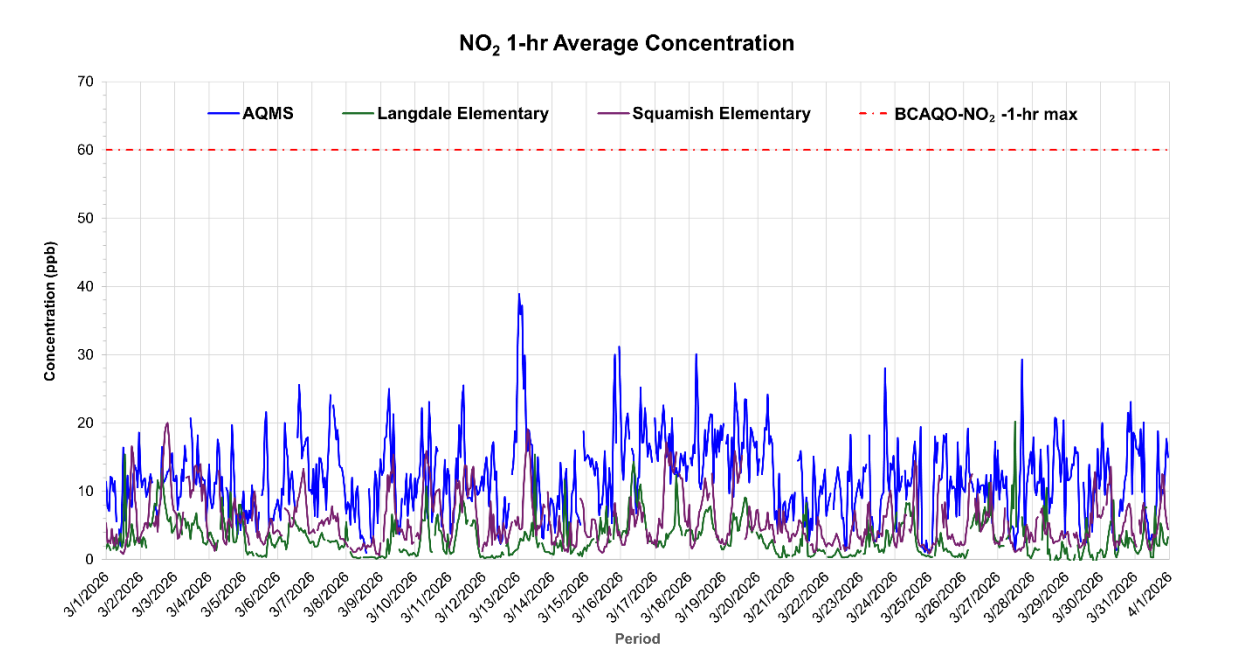
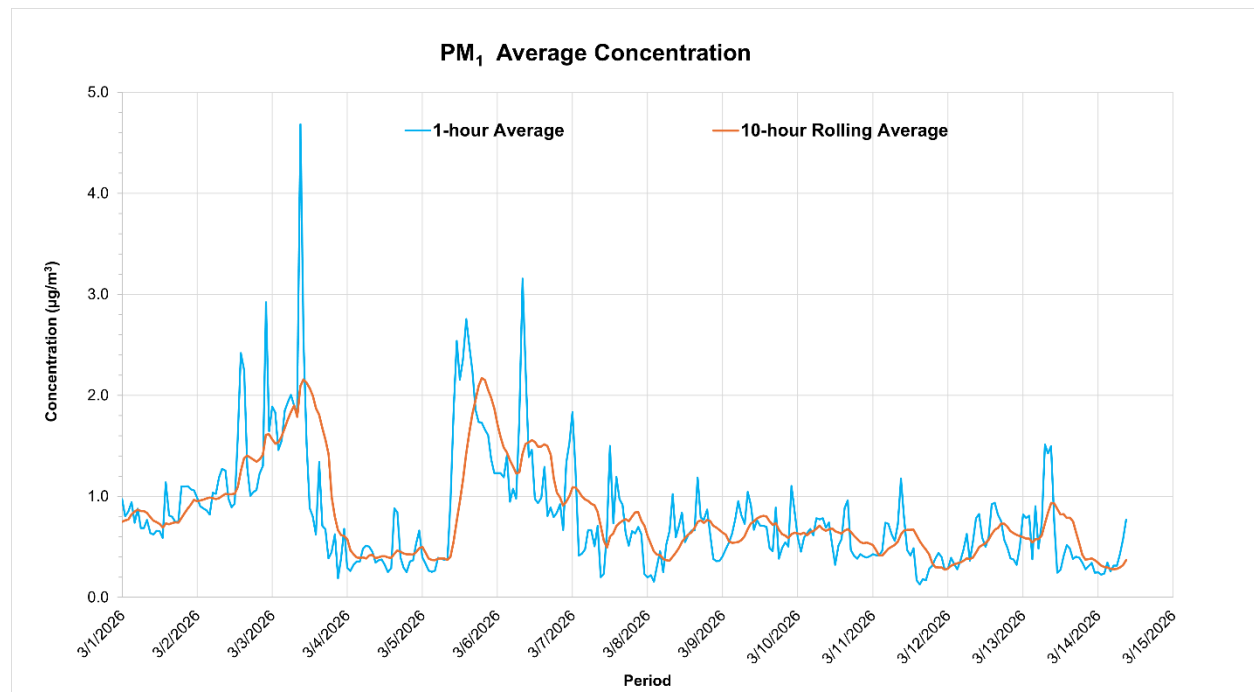


Figure A.6 Hourly PM₁ Concentrations Recorded at the AQMS using Aeroqual Sampler during March 2026



Note: PM₁ data are shown for the period March 1 to March 14 only, as monitoring was discontinued on March 14, 2026.

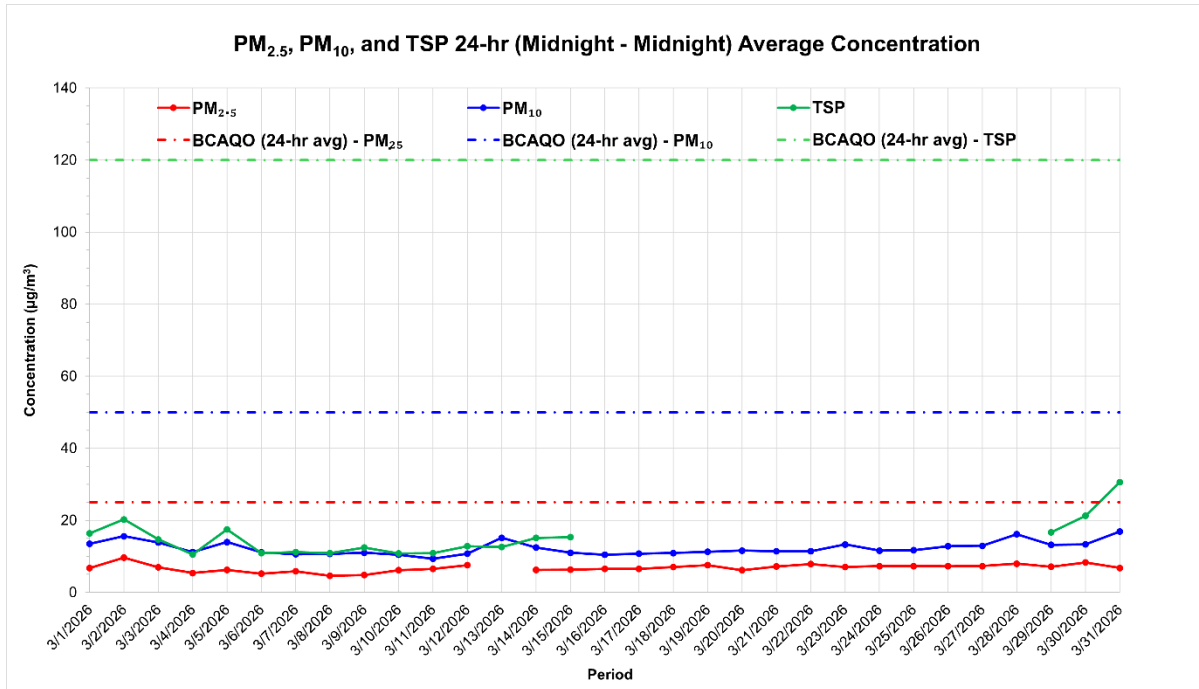


Woodfibre LNG Air Quality Monitoring Station Report for March 2026

Appendix A: Figures

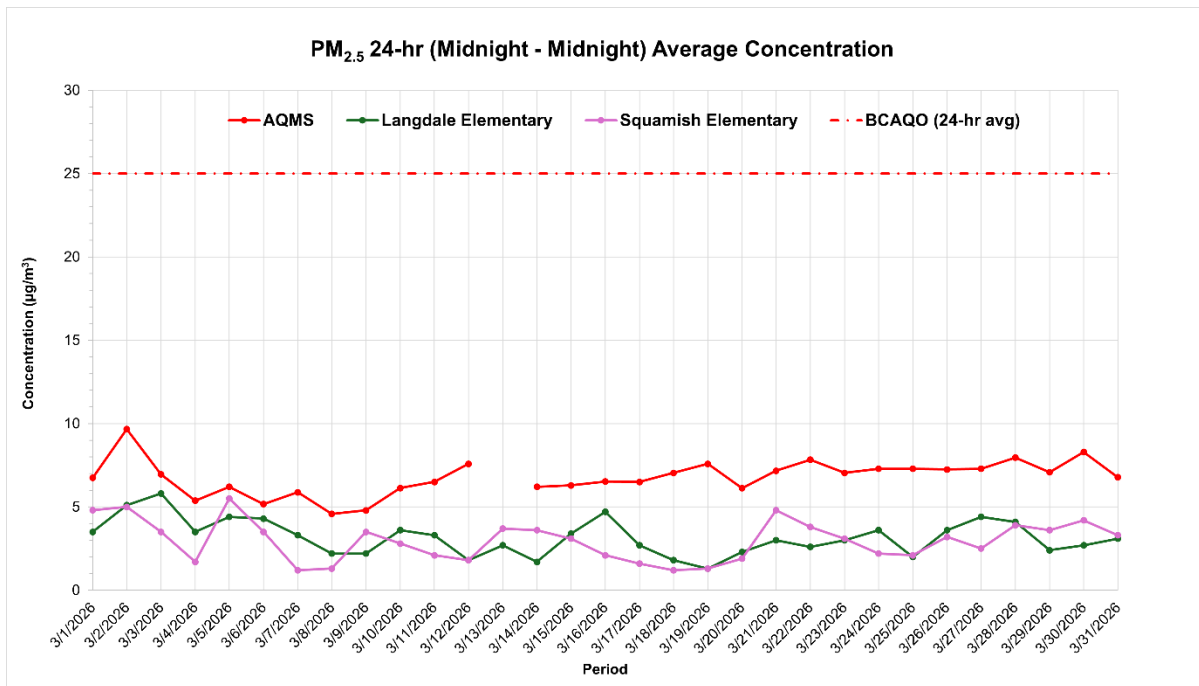
April 30, 2026

Figure A.7 24-Hour Average PM Concentrations Recorded at the AQMS during March 2026



Note: Missing 24-hour average PM_{2.5} data (March 13) and TSP data (March 16 to March 28) is due to a filter tape error.

Figure A.8 24-Hour Average PM_{2.5} Concentrations Recorded at the AQMS, and the Langdale and Squamish Regional Air Quality Stations during March 2026



Note: Missing PM_{2.5} data on March 13 is due to a filter tape error.



Woodfibre LNG Air Quality Monitoring Station Report for March 2026

Appendix A: Figures

April 30, 2026

Figure A.9 24-Hour Average PM₁₀ Concentrations Recorded at the AQMS, and the Langdale Regional Air Quality Station during March 2026

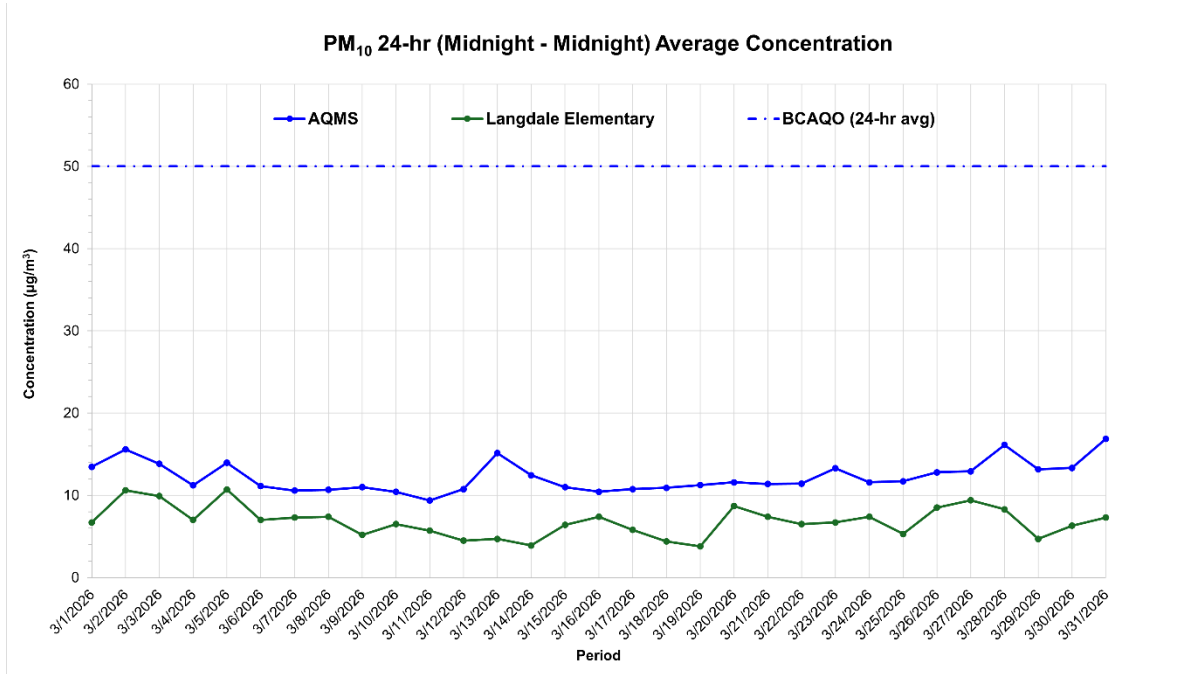
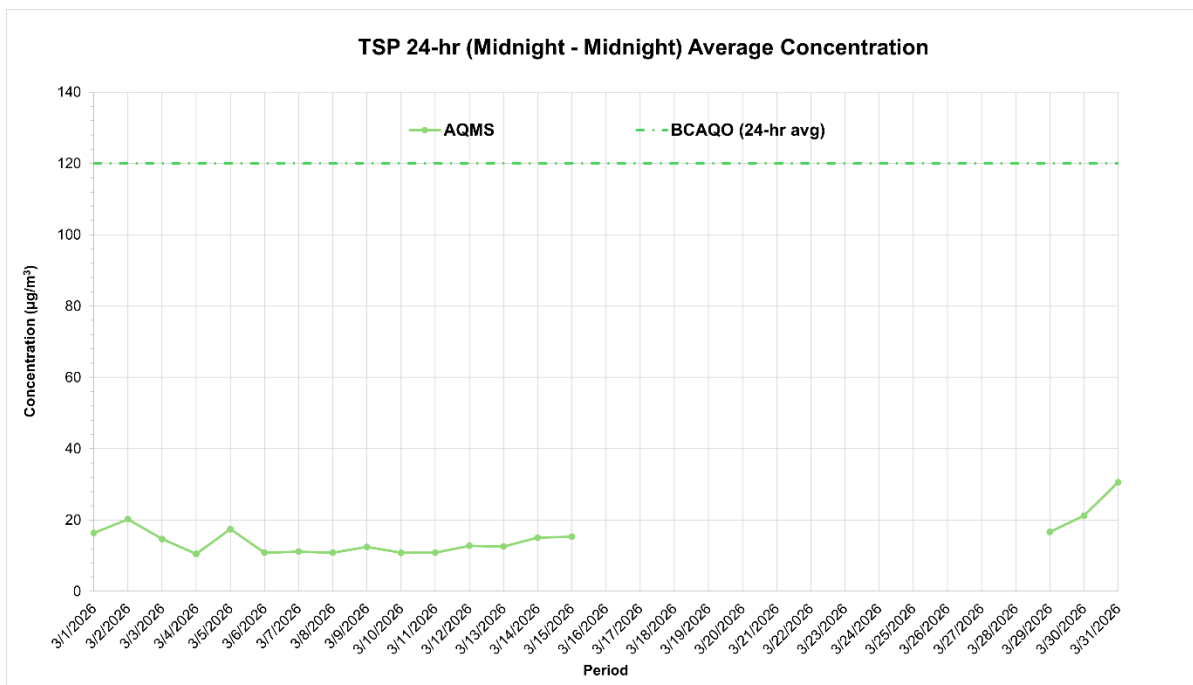


Figure A.10 24-Hour Average TSP Concentrations Recorded at the AQMS during March 2026



Note: Missing TSP data from March 16 to March 28 is due to a Filter tape error.



Woodfibre LNG Air Quality Monitoring Station Report for March 2026

Appendix A: Figures

April 30, 2026

Figure A.11 24-Hour Average NO₂ Concentrations Recorded at the AQMS, and the Langdale and Squamish Regional Air Quality Stations during March 2026

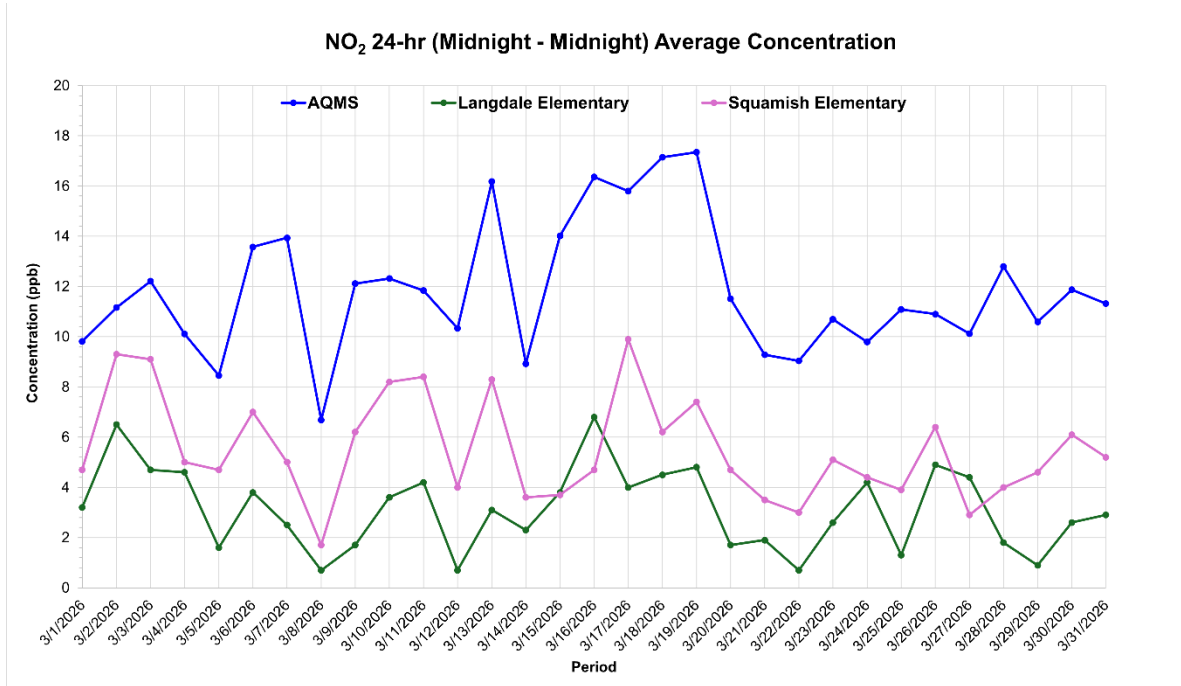
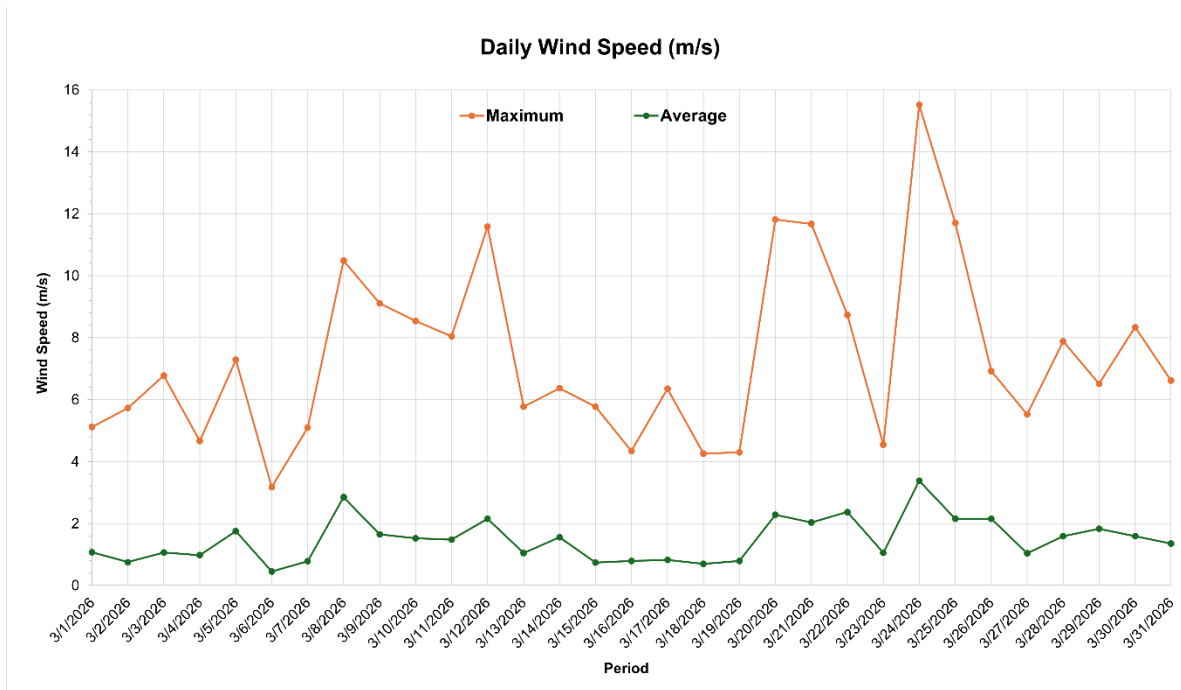


Figure A.12 Daily Average and Maximum Wind Speed Recorded at the Woodfibre LNG Meteorology Station during March 2026

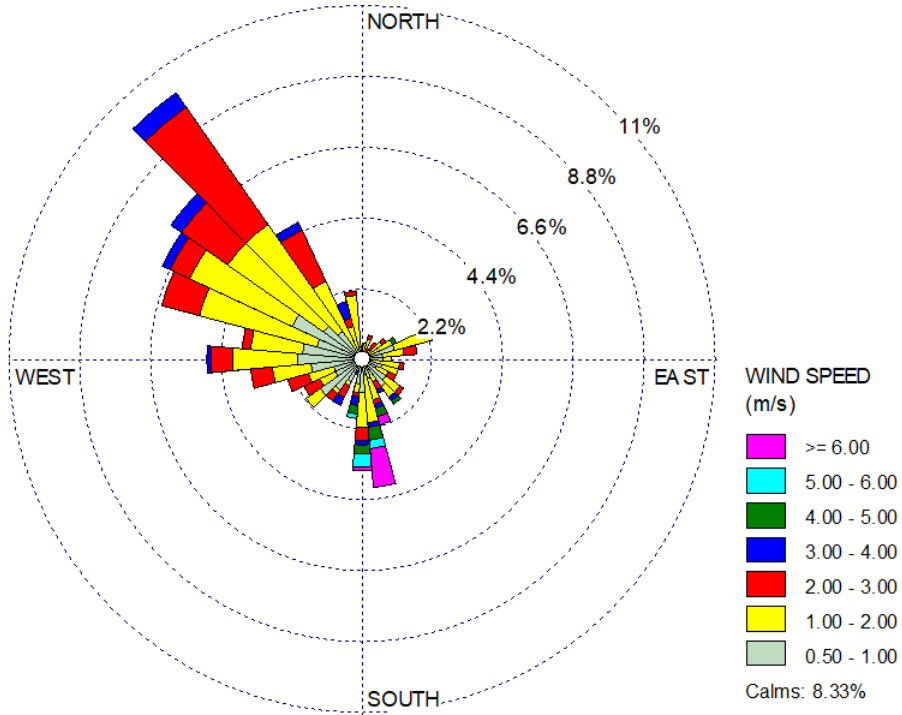


Woodfibre LNG Air Quality Monitoring Station Report for March 2026

Appendix A: Figures

April 30, 2026

Figure A.13 Windrose for Woodfibre LNG Meteorology Station during March 2026

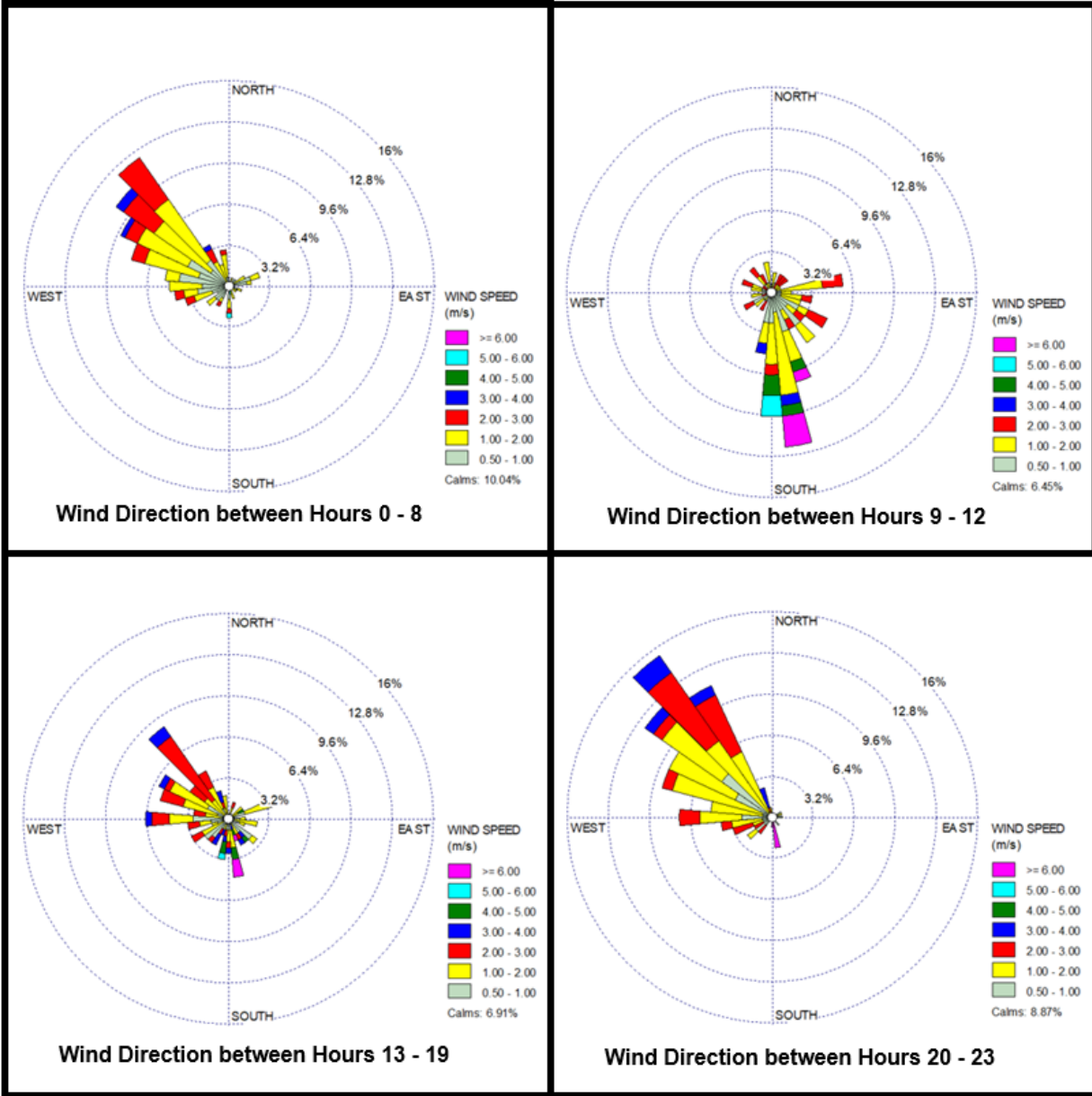


Woodfibre LNG Air Quality Monitoring Station Report for March 2026

Appendix A: Figures

April 30, 2026

Figure A.14 Windrose for Woodfibre LNG Meteorology Station for the hours of 0000 - 0800, 0900 - 1200, 1300 - 1900, and 2000 - 2300 (March 2026)



Woodfibre LNG Air Quality Monitoring Station Report for March 2026

Appendix A: Figures

April 30, 2026

Figure A.15 Daily Average, Minimum, and Maximum Air Temperature Recorded at the Woodfibre LNG Meteorology Station during March 2026

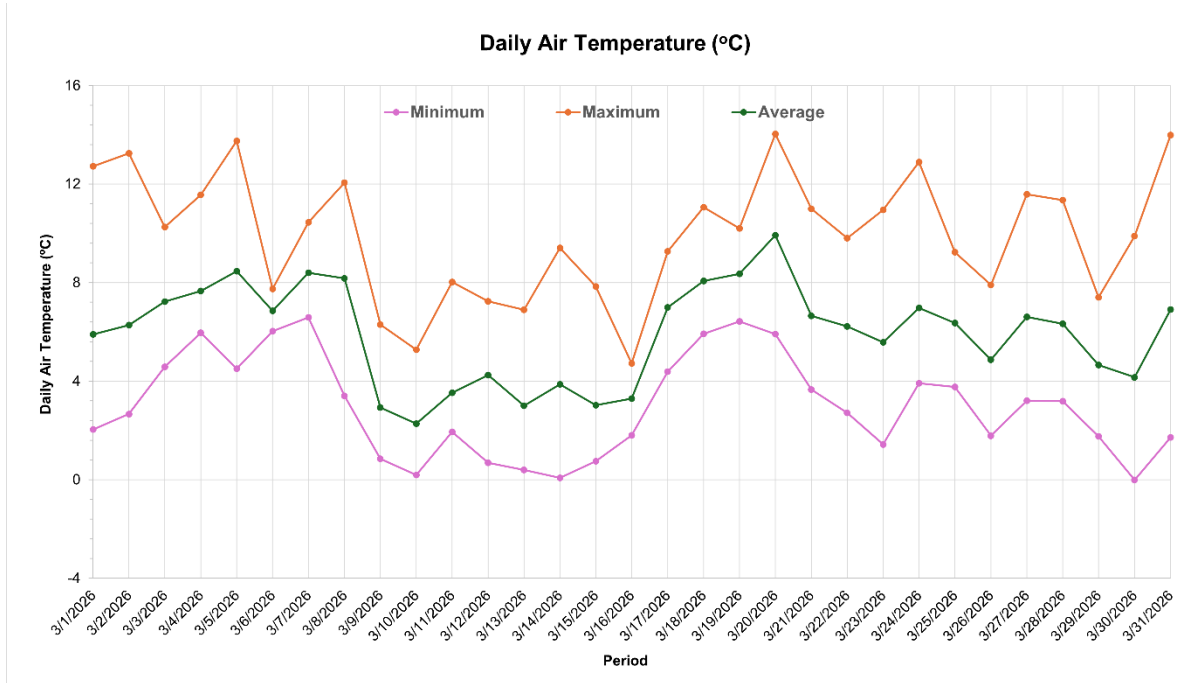
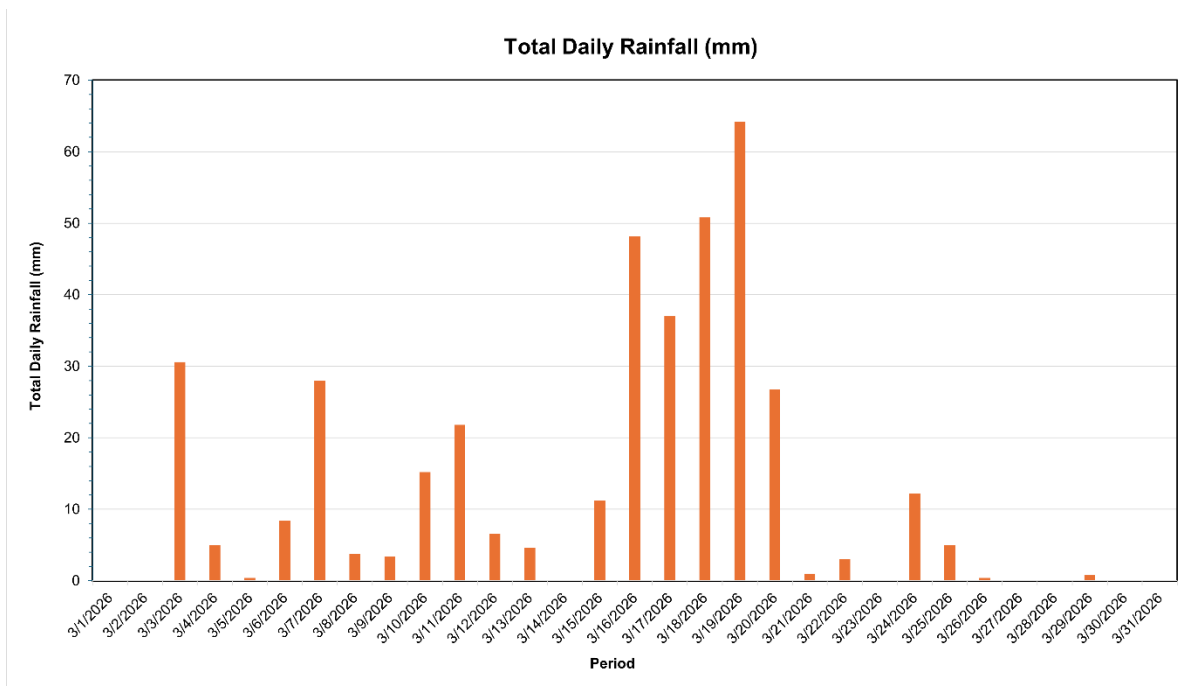


Figure A.16 Daily Rainfall Recorded at the Woodfibre LNG Meteorology Station during March 2026



Woodfibre LNG Air Quality Monitoring Station Report for March 2026

Appendix A: Figures
 April 30, 2026

Figure A.17 Daily Average, Minimum, and Maximum Relative Humidity Recorded at the Woodfibre LNG Meteorology Station during March 2026

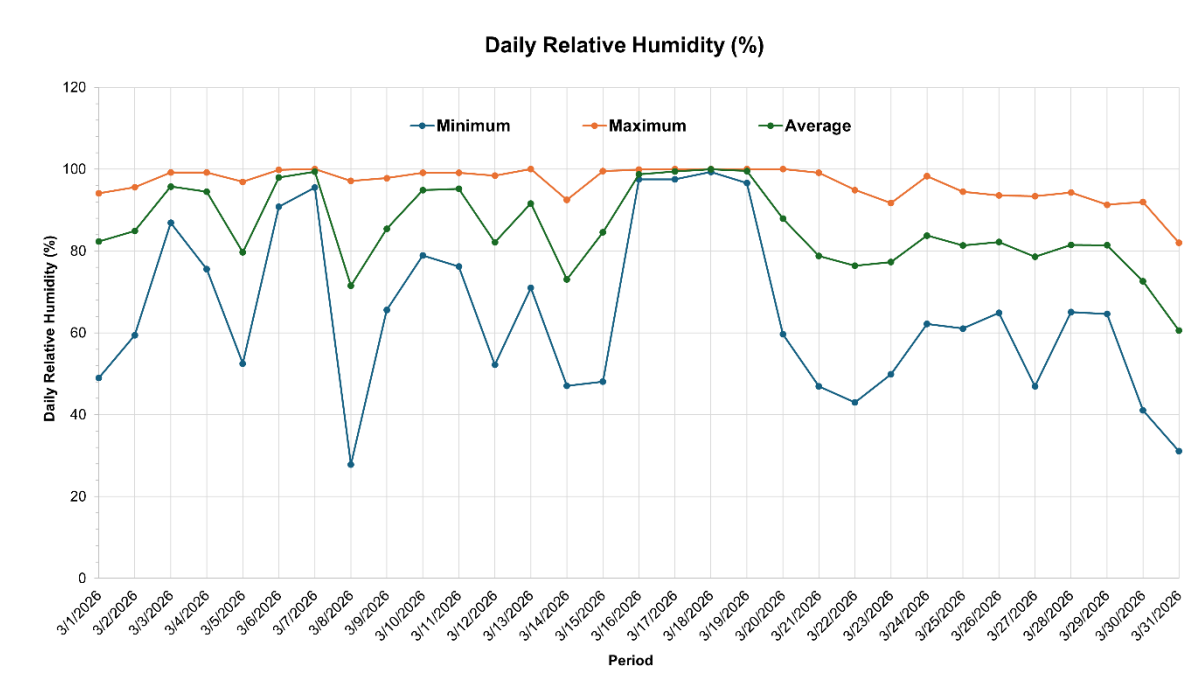
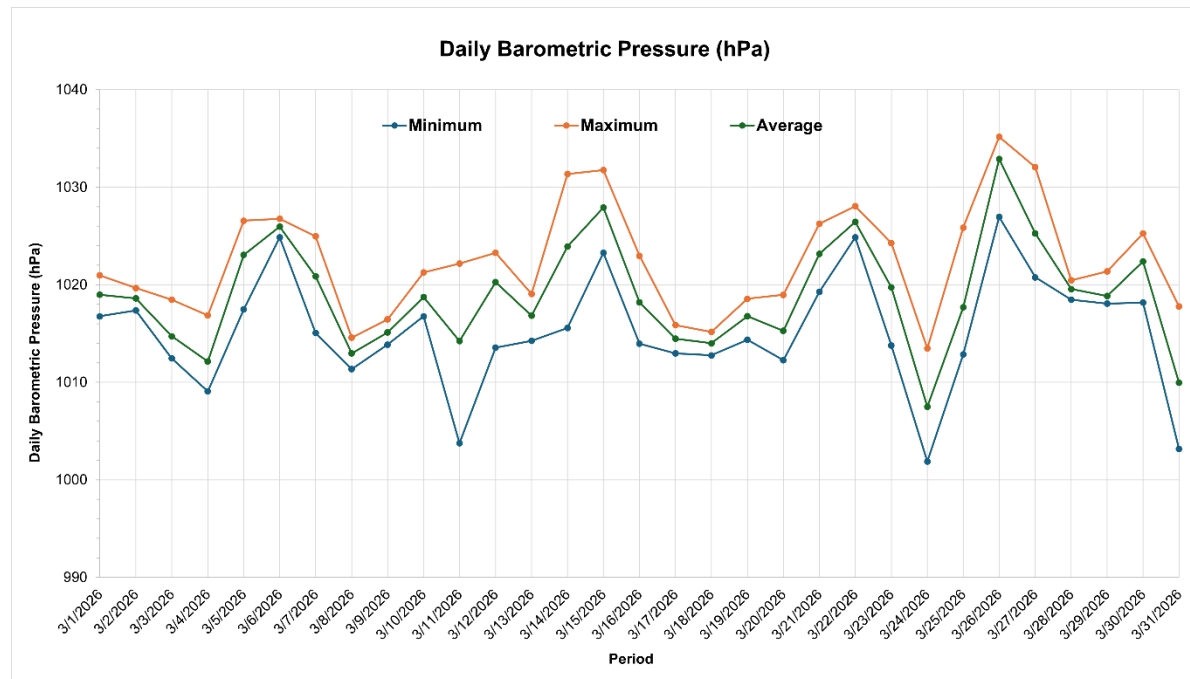


Figure A.18 Daily Average Barometric Pressure Recorded at the Woodfibre LNG Meteorology Station during March 2026



Appendix B Data Tables



Woodfibre LNG Air Quality Monitoring Station Report for March 2026

Appendix B: Data Tables

April 30, 2026

Table B.1 Daily PM₁, PM_{2.5}, PM₁₀, TSP, and NO₂ Concentrations Recorded at the AQMS for March 2026

Date	AQMS (24-hr Average)					AQMS (1-hr Max)
	PM ₁	PM _{2.5}	PM ₁₀	TSP	NO ₂	NO ₂
	µg/m ³	µg/m ³	µg/m ³	µg/m ³	ppb	ppb
3/1/2026	0.8	6.8	13.5	16.4	9.8	18.6
3/2/2026	1.3	9.7	15.6	20.3	11.2	16.5
3/3/2026	1.4	7.0	13.8	14.7	12.2	20.7
3/4/2026	0.4	5.4	11.2	10.5	10.1	19.7
3/5/2026	1.3	6.2	14.0	17.5	8.5	21.6
3/6/2026	1.2	5.2	11.1	10.9	13.6	25.6
3/7/2026	0.7	5.9	10.6	11.2	13.9	24.1
3/8/2026	0.6	4.6	10.7	10.9	6.7	12.9
3/9/2026	0.7	4.8	11.0	12.5	12.1	25.0
3/10/2026	0.6	6.1	10.4	10.8	12.3	23.1
3/11/2026	0.5	6.5	9.4	10.9	11.8	25.5
3/12/2026	0.5	7.6	10.8	12.8	10.3	18.8
3/13/2026	0.6	– ^b	15.1	12.6	16.2	38.9
3/14/2026	– ^a	6.2	12.4	15.1	8.9	18.8
3/15/2026	– ^a	6.3	11.0	15.3	14.0	31.2
3/16/2026	– ^a	6.5	10.4	– ^b	16.4	25.2
3/17/2026	– ^a	6.5	10.8	– ^b	15.8	22.6
3/18/2026	– ^a	7.0	10.9	– ^b	17.1	30.1
3/19/2026	– ^a	7.6	11.3	– ^b	17.3	25.8
3/20/2026	– ^a	6.1	11.6	– ^b	11.5	24.2
3/21/2026	– ^a	7.2	11.4	– ^b	9.3	15.9
3/22/2026	– ^a	7.8	11.4	– ^b	9.0	18.3
3/23/2026	– ^a	7.0	13.3	– ^b	10.7	28.0
3/24/2026	– ^a	7.3	11.6	– ^b	9.8	19.4
3/25/2026	– ^a	7.3	11.7	– ^b	11.1	18.4
3/26/2026	– ^a	7.3	12.8	– ^b	10.9	19.2
3/27/2026	– ^a	7.3	12.9	– ^b	10.1	29.3
3/28/2026	– ^a	8.0	16.1	– ^b	12.8	20.8
3/29/2026	– ^a	7.1	13.2	16.7	10.6	16.5
3/30/2026	– ^a	8.3	13.3	21.3	11.9	23.1
3/31/2026	– ^a	6.8	16.9	30.6	11.3	20.1

Notes:

^a Aeroqual sampler was removed from operation on March 14.

^b Missing 24-hour average data for PM_{2.5} (March 13) and TSP (from March 16 to March 28) is missing due to filter tape error.



Woodfibre LNG Air Quality Monitoring Station Report for March 2026

Appendix B: Data Tables

April 30, 2026

Table B.2 Daily Wind Speed, Air Temperature, Relative Humidity, Barometric Pressure, and Rainfall Recorded at the Woodfibre LNG Meteorology Station for March 2026

Date	Wind Speed (m/s)		Air Temperature (°C)			Relative Humidity (%)			Barometric Pressure (hPa)			Total Rainfall (mm)
	Max	Avg	Min	Max	Avg	Min	Max	Avg	Min	Max	Avg	
3/1/2026	5.1	1.1	2.0	12.7	5.9	49.0	94.1	82.3	1016.8	1021.0	1019.0	0.0
3/2/2026	5.7	0.8	2.7	13.2	6.3	59.4	95.6	84.9	1017.4	1019.7	1018.6	0.0
3/3/2026	6.8	1.1	4.6	10.3	7.2	86.9	99.2	95.7	1012.5	1018.5	1014.7	30.6
3/4/2026	4.7	1.0	6.0	11.6	7.7	75.6	99.2	94.5	1009.1	1016.9	1012.1	5.0
3/5/2026	7.3	1.8	4.5	13.8	8.5	52.5	96.9	79.7	1017.5	1026.6	1023.0	0.4
3/6/2026	3.2	0.5	6.0	7.7	6.9	90.8	99.8	98.0	1024.9	1026.8	1025.9	8.4
3/7/2026	5.1	0.8	6.6	10.5	8.4	95.5	100.0	99.4	1015.1	1025.0	1020.9	28.0
3/8/2026	10.5	2.9	3.4	12.1	8.2	27.8	97.1	71.5	1011.4	1014.6	1013.0	3.8
3/9/2026	9.1	1.7	0.8	6.3	2.9	65.6	97.8	85.4	1013.9	1016.5	1015.1	3.4
3/10/2026	8.5	1.5	0.2	5.3	2.3	78.9	99.1	94.9	1016.8	1021.3	1018.7	15.2
3/11/2026	8.1	1.5	1.9	8.0	3.5	76.2	99.1	95.2	1003.8	1022.2	1014.2	21.8
3/12/2026	11.6	2.2	0.7	7.2	4.3	52.2	98.4	82.2	1013.6	1023.3	1020.3	6.6
3/13/2026	5.8	1.0	0.4	6.9	3.0	71.0	100.0	91.6	1014.3	1019.1	1016.8	4.6
3/14/2026	6.4	1.6	0.1	9.4	3.9	47.1	92.5	73.1	1015.6	1031.4	1023.9	0.0
3/15/2026	5.8	0.7	0.8	7.8	3.0	48.1	99.5	84.6	1023.3	1031.8	1027.9	11.2
3/16/2026	4.3	0.8	1.8	4.7	3.3	97.5	99.9	98.8	1014.0	1023.0	1018.2	48.2
3/17/2026	6.3	0.8	4.4	9.3	7.0	97.5	100.0	99.4	1013.0	1015.9	1014.5	37.0
3/18/2026	4.3	0.7	5.9	11.1	8.1	99.3	100.0	100.0	1012.8	1015.2	1014.0	50.8
3/19/2026	4.3	0.8	6.4	10.2	8.4	96.6	100.0	99.5	1014.4	1018.6	1016.8	64.2
3/20/2026	11.8	2.3	5.9	14.0	9.9	59.6	100.0	87.9	1012.3	1019.0	1015.3	26.8
3/21/2026	11.7	2.0	3.7	11.0	6.6	46.9	99.1	78.8	1019.3	1026.3	1023.2	1.0
3/22/2026	8.7	2.4	2.7	9.8	6.2	43.0	94.9	76.4	1024.9	1028.1	1026.4	3.0
3/23/2026	4.5	1.1	1.4	11.0	5.6	49.9	91.7	77.3	1013.8	1024.3	1019.7	0.0
3/24/2026	15.5	3.4	3.9	12.9	7.0	62.2	98.3	83.8	1001.9	1013.5	1007.5	12.2
3/25/2026	11.7	2.2	3.8	9.2	6.4	61.1	94.5	81.4	1012.9	1025.9	1017.7	5.0
3/26/2026	6.9	2.2	1.8	7.9	4.9	64.9	93.6	82.2	1027.0	1035.2	1032.9	0.4
3/27/2026	5.5	1.0	3.2	11.6	6.6	46.9	93.4	78.6	1020.8	1032.1	1025.2	0.0
3/28/2026	7.9	1.6	3.2	11.4	6.3	65.1	94.3	81.5	1018.5	1020.5	1019.6	0.0
3/29/2026	6.5	1.8	1.8	7.4	4.7	64.6	91.3	81.4	1018.1	1021.4	1018.8	0.8
3/30/2026	8.3	1.6	0.0	9.9	4.2	41.1	92.0	72.6	1018.2	1025.3	1022.4	0.0
3/31/2026	6.6	1.4	1.7	14.0	6.9	31.1	82.0	60.6	1003.2	1017.8	1010.0	0.0



Appendix C DPM Monitoring and Health Risk for Off-Duty Floatel Residents



C.1 DPM Monitoring and Health Risk for Off-Duty Floatel Residents – March 2026

Background

Diesel particulate matter (DPM) is a component of fine particulate emissions associated primarily with diesel combustion sources. As documented in the FAQMMP, approximately 90 percent or more of diesel particulate mass is typically within the PM₁ size fraction. In consideration of this, PM₁ monitoring is used as a conservative surrogate for the DPM exposure assessment, recognizing that measured PM₁ also includes contributions from non-diesel combustion sources.

DPM exposure is relevant to off-duty workers residing on Floatel #1 and Floatel #2 during construction, specifically during the period when Floatel #2 is powered by onboard diesel generators. Floatel #1 has been electrically powered via shore power since its commissioning. Floatel #2 was installed in December 2025 and required the use of onboard diesel generators due to the unavailability of shore power during initial operation. The use of diesel generators on Floatel #2 presents a temporary and localized source of DPM emissions that is expected to last for several months into 2026. Once Floatel #2 is fully connected to shore power, diesel combustion sources associated with Floatel #2 operations will no longer be present, and DPM monitoring for the purposes of health exposure assessment will be discontinued.

DPM exposure is relevant to off-duty workers residing on Floatel #1 and Floatel #2 during construction, particularly during the period when Floatel #2 was powered by onboard diesel generators. Floatel #1 has been electrically powered via shore power since commissioning. Floatel #2 was installed in December 2025 and initially relied on onboard diesel generators due to the unavailability of shore power.

Floatel #2 was connected to shore power on February 25, 2026 and has since largely ceased the use of onboard diesel generators, with the exception of short periods during power disruption. Shore power supplied to Floatel #2 has now been stabilized, and diesel emissions associated with the diesel generators on Floatel #2 are no longer present.

In consideration of this transition, the instrumentation used to monitor PM₁ as a surrogate for DPM was taken out of service on March 14, 2026, as ongoing monitoring for the purposes of health exposure assessment is no longer warranted under standard operating conditions.

Regulatory Context

Health Canada has established health-based reference concentrations for DPM to support the evaluation of potential short-term and long-term inhalation exposure for the general population, including potentially sensitive subgroups¹. These reference concentrations apply to the general public and are more protective than occupational exposure limits. The use of these reference concentrations assumes that off-duty workers residing on the Floatels are treated as typical residents of the Squamish area for the purposes of health risk evaluation.

These DPM reference concentrations include:

- 2-hour average reference concentration of 10 µg/m³
- Annual average reference concentration of 5 µg/m³

These reference concentrations are based on health endpoints related to increased airway resistance and respiratory system inflammation. DPM concentrations below these reference concentrations represent a negligible health risk to people, including health sensitive individuals such as children, seniors, and people with existing respiratory health conditions.

Monitoring Results

Figure C.1 presents the 2-hour rolling average PM₁ concentrations measured during March 2026. The data indicate a maximum 2-hour average concentration of 3.6 µg/m³ for the month. This peak concentration is less than Health Canada's 2-hour reference concentration of 10 µg/m³, indicating that short-term health risk from DPM was negligible for off-duty workers residing on the Floatels.

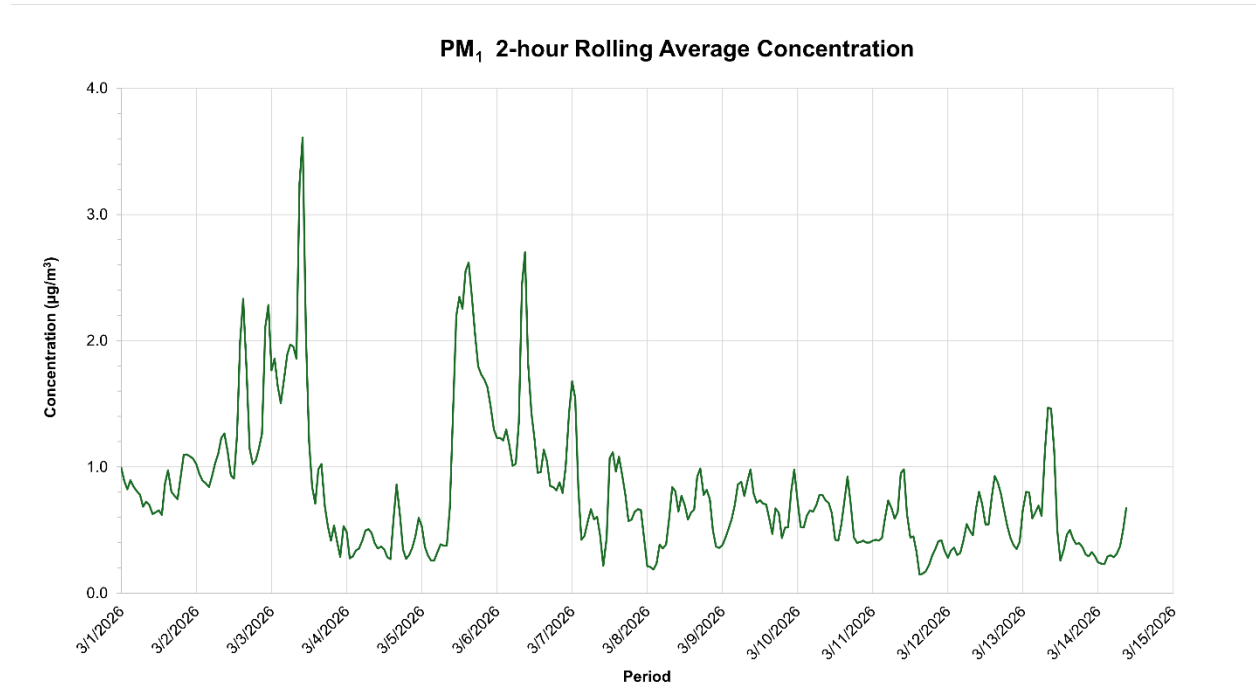
An annual average concentration cannot be calculated for March 2026 alone because a full calendar year of monitoring data is not expected to be collected, as the diesel generators on Floatel #2 are anticipated to operate for only several months. As a result, a monthly average concentration was calculated for March 2026 and compared to Health Canada's long-term reference concentration to provide an indication of potential longer-term health risk.

The monthly average PM₁ concentration was 0.8 µg/m³ during March 2026. This monthly average concentration is less than Health Canada's annual average reference concentration of 5 µg/m³, indicating that longer-term exposure to DPM represents a negligible health risk for off-duty workers residing on the Floatels.

Based on the PM₁ monitoring data, both short-term and longer-term exposures were less than the applicable Health Canada reference concentrations. These results indicate that exposure to DPM represents a negligible health risk for off-duty workers residing on Floatel #1 and Floatel #2 during the monitoring period. No additional mitigation measures are recommended to address DPM exposure beyond the existing controls and monitoring framework.

¹ Health Canada. 2016. Human Health Risk Assessment for Diesel Exhaust.
https://publications.gc.ca/collections/collection_2016/sc-hc/H129-60-2016-eng.pdf

Figure C.1 2-hour Rolling Average PM₁ Concentrations during March 2026



Appendix D Passive SO₂ and VOC Samples – Lab Analysis Report





CLIENT NAME: STANTEC CONSULTING LTD
100-75 24TH STREET
EAST SASKATOON, SK S7K 0K3
ATTENTION TO: Dan Jarratt/Kashif Choudhry
PROJECT: Woodfibre LNG
AGAT WORK ORDER: 26C418948
AIR QUALITY MONITORING REVIEWED BY: Aby Cyriac, Lab Technician
DATE REPORTED: Apr 20, 2026
PAGES (INCLUDING COVER): 7
VERSION+: 1

Should you require any information regarding this analysis please contact your client services representative at (403) 299-2000

+Notes

Disclaimer:

- All work conducted herein has been done using accepted standard protocols, and generally accepted practices and methods. AGAT test methods may incorporate modifications from the specified reference methods to improve performance.
- All samples will be disposed of within 30 days after receipt unless a Long Term Storage Agreement is signed and returned. Some specialty analysis may be exempt, please contact your Client Services Representative for details.
- AGAT's liability in connection with any delay, performance or non-performance of these services is only to the Client and does not extend to any other third party. Unless expressly agreed otherwise in writing, AGAT's liability is limited to the actual cost of the specific analysis or analyses included in the services.
- Any certificate of analysis issued by AGAT shall not be altered or reproduced except in full, without the written consent of the laboratory. Interpretation and use of the test results are the sole responsibility of the Client. AGAT will not be liable for any manipulation or alteration of the results or information contained within certificates of analyses by the Client or third party.
- The test results reported herewith relate only to the samples as received by the laboratory.
- Application of guidelines is provided "as is" without warranty of any kind, either expressed or implied, including, but not limited to, warranties of merchantability, fitness for a particular purpose, or non-infringement. AGAT assumes no responsibility for any errors or omissions in the guidelines contained in this document.
- All reportable information is available on request from AGAT Laboratories, in accordance with ISO/IEC 17025:2017, ISO/IEC 17025:2005 (Quebec), DR-12-PALA and/or NELAP Standards.
- This document is signed by an authorized signatory who meets the requirements of the MELCCFP, CALA, SCC and NELAP.
- For environmental samples in the Province of Quebec: The analysis is performed on and results apply to samples as received. A temperature above 6°C upon receipt, as indicated in the Sample Reception Notification (SRN), could indicate the integrity of the samples has been compromised if the delay between sampling and submission to the laboratory could not be minimized



Air Quality Summary

AGAT WORK ORDER: 26C418948

PROJECT: Woodfibre LNG

3700 – 21 Street NE
CALGARY, ALBERTA
CANADA, T2E 6V6
TEL (403)299-2158
<http://www.agatlabs.com>

CLIENT NAME: STANTEC CONSULTING LTD

SAMPLING SITE:

ATTENTION TO: Dan Jarratt/Kashif Choudhry

SAMPLED BY:

Parameter	Unit	Number of Samples	Peak Reading	Network Average
Ambient Sulfur Dioxide	ppbv	2	0.2	0.2
Ambient VOC as Hexane	ppbv	2	<0.7	<0.7



Certificate of Analysis

AGAT WORK ORDER: 26C418948

PROJECT: Woodfibre LNG

3700 – 21 Street NE
 CALGARY, ALBERTA
 CANADA, T2E 6V6
 TEL (403)299-2158
<http://www.agatlabs.com>

CLIENT NAME: STANTEC CONSULTING LTD

ATTENTION TO: Dan Jarratt/Kashif Choudhry

SAMPLING SITE:

SAMPLED BY:

Passive Air Quality Sampling

DATE RECEIVED: 2026-04-08

DATE REPORTED: 2026-04-20

Parameter	Unit	G / S	RDL	Site#01/ 03Mar/26,13:55	Site#01/ 03Mar/26,13:55
				01Apr/26,12:45	01Apr/26,12:45
SAMPLE DESCRIPTION:				/SO2	/VOC
SAMPLE TYPE:				FILTER	FILTER
DATE SAMPLED:				7618365	7618368
Ambient Sulfur Dioxide	ppbv		0.2	0.2	-
Ambient VOC as Hexane	ppbv		0.7	-	<0.7

Comments: RDL - Reported Detection Limit; G / S - Guideline / Standard

7618365-7618368 All samples are field blank subtracted.

Analysis performed at AGAT Calgary (unless marked by *)

Certified By: _____



Certificate of Analysis

AGAT WORK ORDER: 26C418948

PROJECT: Woodfibre LNG

3700 – 21 Street NE
 CALGARY, ALBERTA
 CANADA, T2E 6V6
 TEL (403)299-2158
<http://www.agatlabs.com>

CLIENT NAME: STANTEC CONSULTING LTD

ATTENTION TO: Dan Jarratt/Kashif Choudhry

SAMPLING SITE:

SAMPLED BY:

Passive Quality Assurance

DATE RECEIVED: 2026-04-08

DATE REPORTED: 2026-04-20

Parameter	Unit	G / S	RDL	Site#01/DUP	BLANK/	Site#01/DUP	BLANK/
				03Mar/26,13:55	03Mar/26,13:55	03Mar/26,13:55	03Mar/26,13:55
SAMPLE DESCRIPTION:				01Apr/26,12:45	01Apr/26,12:45	01Apr/26,12:45	01Apr/26,12:45
SAMPLE TYPE:				/SO2	/SO2	/VOC	/VOC
DATE SAMPLED:				FILTER	FILTER	FILTER	FILTER
				7618366	7618367	7618369	7618370
Ambient Sulfur Dioxide	ppbv		0.2	0.2	<0.2	-	-
Ambient VOC as Hexane	ppbv		0.7	-	-	<0.7	<0.7

Comments: RDL - Reported Detection Limit; G / S - Guideline / Standard

Analysis performed at AGAT Calgary (unless marked by *)

Certified By: _____

Quality Assurance

CLIENT NAME: STANTEC CONSULTING LTD
PROJECT: Woodfibre LNG
SAMPLING SITE:

AGAT WORK ORDER: 26C418948
ATTENTION TO: Dan Jarratt/Kashif Choudhry
SAMPLED BY:

Air Quality Monitoring

Report Date: Apr 20, 2026			DUPLICATE				Method Blank	REFERENCE MATERIAL			METHOD BLANK SPIKE			MATRIX SPIKE		
PARAMETER	Batch	Sample Id	Dup #1	Dup #2	RPD	Measured Value		Acceptable Limits		Recovery	Acceptable Limits		Recovery	Acceptable Limits		
								Lower	Upper		Lower	Upper		Lower	Upper	

Passive Air Quality Sampling

Ambient Sulfur Dioxide	263	7618366	0.2	0.2	NA	< 0.2	106%	90%	110%	107%	80%	120%	96%	80%	120%
Ambient VOC as Hexane	196	7618369	<0.7	<0.7	NA	< 0.7	94%	60%	140%	71%	60%	140%			

Comments: If the RPD value is NA, the results of the duplicates are under 5X the RDL and will not be calculated.
Sample spikes and duplicates are not from the same sample.

Certified By: _____





Method Summary

CLIENT NAME: STANTEC CONSULTING LTD

AGAT WORK ORDER: 26C418948

PROJECT: Woodfibre LNG

ATTENTION TO: Dan Jarratt/Kashif Choudhry

SAMPLING SITE:

SAMPLED BY:

PARAMETER	AGAT S.O.P	LITERATURE REFERENCE	ANALYTICAL TECHNIQUE
Air Quality Monitoring			
Ambient Sulfur Dioxide	AQM-43-16007	Inhouse Method	ION CHROMATOGRAPH
Ambient VOC as Hexane	IHF-60-25003	Modified NIOSH-1500,1501,1003	GC/MS

Accreditations and Associations

CLIENT NAME: STANTEC CONSULTING LTD

PROJECT: Woodfibre LNG

SAMPLING SITE:

AGAT WORK ORDER: 26C418948

ATTENTION TO: Dan Jarratt/Kashif Choudhry

SAMPLED BY:

Accreditations

AGAT Laboratories is accredited, certified, or licensed to applicable standards for specific tests, parameters, and matrices, as listed in the individual laboratory's current scope(s) of accreditation by the following organizations:

Standards Council of Canada (SCC)
Canadian Association for Laboratory Accreditation (CALA)
Canadian Council of Independent Laboratories (CCIL)
American Association for Laboratory Accreditation (A2LA)
ANSI National Accreditation Board (ANAB)
Arizona Department of Health Services (ADHS) – Tempe AZ0851 / AZR000526095, Calgary 2910 AZ0845 / CN00931, Calgary 2420 AZ0843 / CN00932, Mississauga Coopers AZ0847 / CN00929, Mississauga McAdam AZ0848 / CN00930
Ministère de l'Environnement, de la Lutte contre les changements climatiques, de la Faune et des Parcs (MELCCFP)
Ontario Ministry of the Environment, Conservation and Parks (MECP)
New York State Department of Health (NYS DOH)

The tests on this report may not necessarily be included on the scope of accreditation, which are available at the websites for the individual organizations listed above, or linked on our Accreditations page.

Associations

As a leader in science and technology, AGAT Laboratories is proud to hold a number of professional partnerships with key industry organizations and associations. Following is a list of just some of the organizations with which we are currently involved. Association memberships may be limited to specific locations and/or personnel. Please contact AGAT Laboratories for specifics regarding association memberships.

Association des firmes de génie-conseil du Québec (AFG)
Association of Professional Engineers and Geoscientists of Alberta (APEGA)
Association Québécois de Vérification (AQVE)
British Columbia Environmental Industry Association (BCEIA)
Canadian Energy Geoscience Association (CEGA)
Canadian Land Reclamation Association (CLRA)
Conseil des entreprises en technologies environnementales du Québec (CETEQ)
Conseil Patronal de l'Environnement du Québec (CPEQ)
Energy NL
Environmental Services Association of Alberta (ESAA)/ Environmental Services Association Maritimes (ESAM)
Ontario Environmental Industry Association (ONEIA)
Réseau Environnement
The NELAC Institute (TNI)



Laboratory Use Only

AGAT Job Number: 26C418948

Notes:

Chain of Custody Record

Report Information Company: Stantec Contact: Kashif Choudhry Address: 100-75 24th Street East Saskatoon, SK, S7K 0K3 Phone: 474-774-0927 Fax: LSD: Client Project #: 123222160-12-2024.300	Invoice To Same Yes <input type="checkbox"/> / No <input type="checkbox"/> Company: Stantec Contact: accounts.payable.invoices@stantec.com and Address: 100-75 24th Street East Saskatoon, SK, S7K 0K3 Phone: 474-774-0927 Fax: PO/AFE#: 123222160-12-2024.300	Turnaround Time Required (TAT) Regular TAT <input checked="" type="checkbox"/> 5 to 7 working days Rush TAT <input type="checkbox"/> Less than 24 hours <input type="checkbox"/> 24 to 48 hours <input type="checkbox"/> 48 to 72 hours Date Required:
--	---	--

UPON FILLING OUT THIS SECTION, THE CLIENT ACCEPTS THAT SURCHARGES WILL BE ATTACHED TO THIS ANALYSIS. IF NOT COMPLETED, REGULAR TAT WILL BE DEFAULT.

LABORATORY USE (LAB ID #)	SITE NAME/SAMPLE DESCRIPTION	DATE/TIME INSTALLED	DATE/TIME EXTRACTED	COMMENTS - SITE SAMPLE INFO. SAMPLE CONTAINMENT	H2S Passive	SO2 Passive	NO2 Passive	O3 Passive	PM2.5	PM10	TSP	Duplicate - SO2 Passive	Blank - SO2 Passive	VOC Passive	Duplicate - VOC Passive	Blank - VOC Passive
	Please Email reports to:															
	kashif.choudhry@stantec.com															
	daniel.casanova@stantec.com															
	katie.chuen@stantec.com															
	dan.jarratt@stantec.com															
	WLNG-SO2-AQMS					<input checked="" type="checkbox"/>										
	WLNG-SO2-DUPLICATE											<input checked="" type="checkbox"/>				
	WLNG-SO2-BLANK												<input checked="" type="checkbox"/>			
	WLNG-VOC-AQMS													<input checked="" type="checkbox"/>		
	WLNG-VOC-DUPLICATE														<input checked="" type="checkbox"/>	
	WLNG-VOC-Blank															<input checked="" type="checkbox"/>

Samples Relinquished By (Print Name and Sign):	Date/Time	Samples Received By (Print Name and Sign):	Date/Time	Pink Copy - Client Yellow Copy - AGAT White Copy - AGAT	Page <u>1</u> of <u>1</u>
Samples Relinquished By (Print Name and Sign):	Date/Time	Samples Received By (Print Name and Sign):	Date/Time		Nº: <u>04826</u>
Samples Relinquished By (Print Name and Sign):	Date/Time	Samples Received By (Print Name and Sign):	Date/Time		