



TECHNICAL MEMORANDUM

To: Ian McAllister, Ashleigh Crompton, Mike Champion,
Mark Zan and Ryan Schucroft (Woodfibre LNG) **Date:** 10 Apr 2026

From: Holly Pelletier and Cheng Kuang (Lorax) **Project #:** A825-1

Subject: PE-111578 Weekly Discharge and Compliance Report #108 for March 29 – April 4

Waste Discharge Authorization (WDA) Effluent Permit PE-111578 was issued by the British Columbia Energy Regulator (BCER) to Woodfibre LNG on February 9, 2024. The associated WDA discharge and compliance monitoring program is conducted by on-site Environmental Monitors (Roe Environmental) that are sub-contracted to the civil works contractor (LB LNG). Analytical samples are submitted by Roe Environmental to ALS Environmental in Burnaby, BC, for testing. Lorax Environmental Services Ltd. (Lorax) provides water quality database management and WDA compliance reporting services to Woodfibre LNG.

This technical memorandum (Report #108) was prepared by Lorax and summarizes WDA monitoring conducted for the period of March 29 – April 4. Monitoring data and pending results from prior monitoring periods available at the time of reporting are tabulated and included as appendices to this memorandum. Report #108 has been prepared to meet the requirements specified in Condition 4.2 of PE-111578:

“The Permittee shall summarize the results of the discharge and compliance monitoring program in a report that shall be submitted to the BCER weekly over the term of this permit. Reports must include suitable tabulated data. The table must include any applicable regulatory limits/guidelines e.g. permit limits, BC Water Quality Guidelines etc. Any exceedances of respective regulatory limits/guidelines must be clearly highlighted. Any missed sampling events/missing data must be identified with an explanation provided. Reporting frequency may be reduced upon a history of compliance and by written confirmation from the BCER. These reports shall be submitted to Waste.Management@bc-er.ca. A copy of the reports shall be provided to each First Nation consulted with regarding this subject permit, and also made publicly available on the Woodfibre LNG Environmental Reporting webpage.”

Site layout and water management figures and site images are included in Appendix A. Monitoring results are tabulated in Appendix B through Appendix E for contact water, treated water and receiving environment samples.

1. Current Conditions

1.1 Water Management Infrastructure

The Construction Phase of the Woodfibre LNG Export Facility commenced in October 2023. Shoring works along the foreshore areas were initiated in December 2023, and construction of water management infrastructure commenced in early 2024. Land-based construction occurs within two water management areas east and west of Mill Creek, referred to as the east and west catchments, respectively. Non-contact water is intercepted and diverted around the construction areas to Howe Sound and Mill Creek. Stormwater runoff collected within the east and west catchment areas (7.12 and 5.92 ha, respectively) is managed as site contact water and is conveyed to the East Wastewater Treatment Plant (WWTP) for treatment, or to the East and West Sedimentation Ponds for settling of suspended particulate prior to discharge. Intermittent discharge to Howe Sound from the East and West Sedimentation Ponds commenced April and October 2024, respectively.

Non-contact water from the slopes above and outside the Woodfibre LNG construction area is intercepted by diversion ditches and conveyed to Howe Sound or Mill Creek. Diversion ditches for the west catchment convey water to Mill Creek at station OUT-06, or to Howe Sound at station OUT-02 (Appendix A, Figure 1). During heavy precipitation, non-contact water is also conveyed to Howe Sound via station OUT-01. East of Mill Creek, non-contact water is intercepted and diverted around the east catchment along pre-existing road ditches that flow to East Creek or Mill Creek and through Outfall 13 (OUT-13). The diversion ditch connected to Outfall 11 (OUT-11) is not yet constructed; therefore, Outfall 11 is not in use. The lower reach of East Creek discharges to Howe Sound through Outfall 12 (OUT-12).

The contact water conveyance ditches described in PE-111578 were designed to transport non-contaminated contact water (*i.e.*, stormwater) to the East and West Sedimentation Ponds and will be constructed following completion of site preparation activities (*e.g.*, site grading, bedrock excavation) along the ditch lines. Until the ditches are operational, contact waters within the catchments are managed to remain on site using a system of berms, sumps, temporary ditches and baker tanks for intermediate storage and are then directed to the East WWTP for treatment, or the East and West Sedimentation Ponds prior to re-use or discharge.

The East and West WWTPs were commissioned to treat contaminated contact water in April and August 2024, respectively. The installed treatment capacities are 1,080 m³/day (East WWTP) and 120 m³/day (West WWTP). Lower than expected volumes of contaminated contact water have been encountered during construction; therefore, operation of the West WWTP has been suspended since September 25, 2024, and all contaminated contact waters are directed to the East WWTP for treatment. Treated effluent is generally directed to the East Sedimentation Pond. Occasionally the East WWTP effluent is discharged to Howe Sound at authorized discharge location SP-E-OUT.

Discharge from the East and West Sedimentation Ponds is controlled using pumps. Sedimentation pond effluent is pumped to the 2700GPM TSS settling system to remove TSS prior to discharge. Each sedimentation pond has an associated authorized discharge location (stations SP-E-OUT and SP-W-OUT) with an initial dilution zone (IDZ) where discharged water mixes with Howe Sound surface waters. The IDZ is defined in PE-111578 and extends in a 150 m radius from each point of discharge into Howe Sound. Since June 2025, surplus contact water in the East Sedimentation Pond is directed to the West Sedimentation Pond for storage or discharge, and discharge of clarified non-contaminated contact water to Howe Sound generally only occurs from the West Sedimentation Pond.

The flocculant-based 2700GPM TSS settling system has an installed capacity to clarify 14,700 m³/day of contact water and consists of six parallel treatment trains (Trains 1 to 6), each with an installed capacity of 2,450 m³/day. A staged commissioning of the 2700GPM system began June 2025 and was completed November 2025. Only one train is operated when contact water flows are low. Additional trains are activated as needed to match the influent volumes. Some of the TSS-clarified water may be recirculated back to the ponds or re-used for construction purposes (*e.g.*, dust suppression).

The construction phase water management layout and monitoring stations are shown in Appendix A, Figure 1. Contact water collection and dewatering locations and photographs of the sedimentation ponds are shown in Appendix A, Figure 2 through Figure 5.

1.2 Weather and Water Management

Variable weather conditions were observed during the March 29 – April 4 monitoring period, with precipitation recorded each day except on March 30 and 31. The total precipitation amount during the monitoring period was 23.8 mm. The daily weather conditions are summarized in Table 1.

**Table 1:
Summary of Certified Project Area (CPA) Daily Weather Conditions.**

Date	Precipitation (mm)	Max. Temp (°C)	Min. Temp (°C)	Weather Description
2026-03-29	0.8	7.4	1.8	Sunny
2026-03-30	0	9.9	0	Sunny
2026-03-31	0	14	1.7	Sunny
2026-04-01	17.6	7.6	3.6	Rain
2026-04-02	1.4	11.5	5.4	Overcast
2026-04-03	3.8	9.2	6.7	Scattered showers
2026-04-04	0.2	18.3	6.4	Sunny

Note: Data retrieved from the Woodfibre on-site weather station operated by Stantec.

From March 29 – April 4, the East Sedimentation Pond received water from the 36T Baker Tank, the M09 Sump, the MOF Sump and recirculated effluent from the East WWTP (Appendix A, Figure 2). No water from the East Sedimentation Pond was transferred to the West Sedimentation Pond from March 29 – April 4 (Appendix B, Table B-5).

Routine operation of the East WWTP continued during the monitoring period (March 29 – April 4). Concrete contact water and water from the Hydrovac Pit was periodically directed to the East WWTP for treatment, as well as water stored in the East Sedimentation Pond (Appendix A, Figure 2 and Figure 3). East WWTP treated effluent was discharged to the East Sedimentation Pond each day during the monitoring period (March 29 – April 4). Daily water volumes processed by the East WWTP are provided in Appendix B (Table B-5).

From March 29 – April 4, the West Sedimentation Pond received water from the Area 4100 and Area 4200 Sumps as well as recirculated effluent from the 2700GPM TSS settling system (Appendix A, Figure 3). West Sedimentation Pond effluent was clarified through the 2700GPM system each day during the monitoring period (March 29 – April 4) except on April 4. Clarified effluent was either recirculated back to the pond or intermittently discharged to Howe Sound. A total of 1,097 m³ of clarified effluent was intermittently discharged to Howe Sound from station SP-W-OUT each day during the monitoring period (March 29 – April 4) except on March 31 and April 4. Clarified effluent was not reclaimed for construction use. Daily clarified effluent volumes from the 2700GPM TSS settling system recirculated to the West Sedimentation Pond or discharged to Howe Sound are provided in Appendix C (Table C-5).

2. Monitoring Summary

The locations of PE-111578 monitoring stations are shown on Figure 1. Monitoring is conducted by the on-site Environmental Monitors (Roe Environmental). Analytical samples are submitted by Roe Environmental to ALS Environmental in Burnaby, BC for testing.

The following PE-111578 and supplementary monitoring stations are currently being monitored:

- Non-contact diversion ditch outlet monitoring stations (OUT-01, OUT-02 and OUT-06).
- Creek water monitoring stations for Woodfibre, Mill and East Creek (SW-01, SW-02, SW-03, SW-04, SW-07).
- Contact water monitoring locations (SP-E-IN, WWTP-E-IN, COMB-WWTP-E-IN, WWTP-E-OUT, SP-W-IN, 2700GPM-IN, and 2700GPM-OUT).
- Supplementary contact water stations at the outlet of each sampling train. These samples are identified as W2700T#-OUT (with # equal to the train number).
- Effluent compliance stations (SP-E-OUT and SP-W-OUT). As described in Section 1.1, when there is surplus water, West Sedimentation Pond clarified effluent from the individual 2700GPM trains is directed to SP-W-OUT for discharge. From late September to early December 2025, SP-W-OUT was sampled from the discharge manhole. From December 1 to 8, a pipe manifold was installed that combines effluent from the individual trains into a single discharge line and is configured with a sampling port. Since December 8, samples have been collected at the sampling port or at the outfall.
- Howe Sound reference and IDZ monitoring stations (WQR1, WQR2, IDZ-E1, IDZ-E2, IDZ-W1, and IDZ-W2).

The diversion ditch outlet at Outfall 11 (OUT-11) does not receive water and will not be monitored until it is operational.

The influent culverts for East and West Sedimentation Ponds are not operational and the associated influent stations defined in PE-111578 (SP-E-IN-1, SP-E-IN-2, SP-W-IN-1 and SP-W-IN-2) have been replaced with temporary influent monitoring stations SP-E-IN and SP-W-IN (East and West Sedimentation Pond, respectively) located in-pond, at the influent end of each pond.

A flocculant-based TSS settling system (2700GPM) is used at the West Sedimentation Pond as described in Section 1.1. Influent and effluent are monitored at stations 2700GPM-IN and 2700GPM-OUT, respectively. The 2700GPM-OUT station represents the combined discharge line from all six individual treatment trains when clarified effluent is directed to the West Sedimentation Pond and is equivalent to the SP-W-OUT station. At times when only one 2700GPM treatment train is operated, the 2700GPM-OUT sample may be collected at the outlet of that train. Monitoring of the individual 2700GPM settling system treatment trains is supplemental to the PE-111578 monitoring requirements and is conducted at the discretion of field staff.

Water quality was monitored at stations OUT-02, IDZ-E1, IDZ-E2, IDZ-W1, IDZ-W2, WQR1, WQR2, SP-E-IN, WWTP-E-IN, COMB-WWTP-E-IN, WWTP-E-OUT, SP-W-IN, SP-W-OUT, 2700GPM-IN, W2700T3-OUT, and W2700T4-OUT during the monitoring period (March 29 – April 4). Sampling dates and parameters tested are summarized in Table 2.

Overall, the PE-111578 monitoring requirements that were applicable during the monitoring period (March 29 – April 4) were met. The initial high frequency monitoring requirements outlined in effluent permit PE-111578 for the sedimentation ponds, WWTP and IDZ stations have been met. On June 25, 2025, BCER approved the implementation of low-frequency (*i.e.*, bi-monthly and monthly) monitoring requirements specified in PE-111578 for all parameters, except for metals, hexavalent chromium, and methylmercury, which continue to be monitored weekly at sedimentation pond and WWTP stations. Monthly PE-111578 monitoring requirements for non-contact water diversion ditch outlets and receiving environment stations were met for the month of March.

Daily field parameters and a weekly analytical sample were not collected at the east catchment effluent compliance station (SP-E-OUT) as there was no discharge to Howe Sound from the East Sedimentation Pond during the monitoring period (March 29 – April 4). Daily field parameters were not collected at the west catchment effluent compliance station (SP-W-OUT) on March 31 and April 4 as there was no discharge to Howe Sound from the West Sedimentation Pond on those days. Daily field parameters and a weekly analytical sample were not collected at the influent and effluent stations of the West WWTP (WWTP-W-IN and WWTP-W-OUT, respectively) as it was not operational during the monitoring period (March 29 – April 4).

**Table 2:
Summary of PE-111578 Monitoring Samples Collected March 29 – April 4.**

Sampling Date	Sample	Description	Parameters Tested	Monitoring Frequency
March 29, 2026	SP-E-IN	East Sedimentation Pond influent monitored at cell 1 of the pond	Field Parameters.	D
	WWTP-E-IN	East WWTP at the influent meter box	Field Parameters.	D
	WWTP-E-OUT	East WWTP at the effluent meter box		
	SP-W-IN	West Sedimentation Pond influent monitored at cell 1 of the pond	Field Parameters.	D
	SP-W-OUT	West Sedimentation Pond clarified effluent discharge to Howe Sound, collected at the SP-W-OUT outfall structure	Field Parameters.	D
	2700GPM-IN	2700GPM TSS settling system at the influent meter box	Field Parameters.	P
March 30, 2026	SP-E-IN	East Sedimentation Pond influent monitored at cell 1 of the pond	Field Parameters.	D
	WWTP-E-IN	East WWTP at the influent meter box	Field Parameters.	D
	WWTP-E-OUT	East WWTP at the effluent meter box		
	SP-W-IN	West Sedimentation Pond influent monitored at cell 1 of the pond	Field, Physical & General Parameters, Total, Dissolved and Speciated Metals, and Methylmercury.	D, M ₂ , W
	SP-W-OUT	West Sedimentation Pond clarified effluent discharge to Howe Sound, collected at the manifold that combines effluent from the individual 2700GPM trains into a single discharge line configured with a SP-W-OUT sampling port and at the SP-W-OUT outfall structure	Field, Physical & General Parameters, Total, Dissolved and Speciated Metals, and Methylmercury.	D, M ₂ , W
	2700GPM-IN	2700GPM TSS settling system at the influent meter box	Field, Physical & General Parameters, Total, Dissolved and Speciated Metals, and Methylmercury.	P
	W2700T3-OUT	2700GPM TSS settling system at the outlet of Train 3	Field, Physical & General Parameters, Total, Dissolved and Speciated Metals, and Methylmercury.	P
	W2700T4-OUT	2700GPM TSS settling system at the outlet of Train 4		
OUT-02	Non-contact water diversion ditch outlet	Field, Physical & General Parameters, Total and Dissolved Metals, and Methylmercury.	M, M ₅	
March 31, 2026	SP-E-IN	East Sedimentation Pond influent monitored at cell 1 of the pond	Field, Physical & General Parameters, Total, Dissolved and Speciated Metals, and Methylmercury.	D, M ₂ , W
	WWTP-E-IN	East WWTP at the influent meter box	Field, Physical & General Parameters, Total, Dissolved and Speciated Metals, and Methylmercury.	D, M ₂ , W
	WWTP-E-OUT	East WWTP at the effluent meter box		
	SP-W-IN	West Sedimentation Pond influent monitored at cell 1 of the pond	Field Parameters.	D
	2700GPM-IN	2700GPM TSS settling system at the influent meter box	Field Parameters.	P
April 1, 2026	SP-E-IN	East Sedimentation Pond influent monitored at cell 1 of the pond	Field Parameters.	D
	WWTP-E-IN	East WWTP at the influent meter box	Field Parameters.	D
	WWTP-E-OUT	East WWTP at the effluent meter box		
	SP-W-IN	West Sedimentation Pond influent monitored at cell 1 of the pond	Field Parameters.	D
	SP-W-OUT	West Sedimentation Pond clarified effluent discharge to Howe Sound, collected at the SP-W-OUT outfall structure	Field Parameters.	D
	2700GPM-IN	2700GPM TSS settling system at the influent meter box	Field Parameters.	P
April 2, 2026	SP-E-IN	East Sedimentation Pond influent monitored at cell 1 of the pond	Field & Physical Parameters and Hexavalent Chromium.	D, P
	WWTP-E-IN	East WWTP at the influent meter box	Field & Physical Parameters and Hexavalent Chromium.	D, P
	WWTP-E-OUT	East WWTP at the effluent meter box		
	COMB-WWTP-E-IN	Combined East WWTP influent from the concrete contact water treatment stream and the East Sedimentation Pond, collected from the heated frac tank	Field & Physical Parameters and Hexavalent Chromium.	P
	SP-W-IN	West Sedimentation Pond influent monitored at cell 1 of the pond	Field Parameters.	D
	SP-W-OUT	West Sedimentation Pond clarified effluent discharge to Howe Sound, collected at the SP-W-OUT outfall structure	Field Parameters.	D
	2700GPM-IN	2700GPM TSS settling system at the influent meter box	Field Parameters.	P
	IDZ-E1-0.5	Howe Sound IDZ station E1; 0.5 m below surface	Field, Physical & General Parameters, VH & BTEX, EPHs & PAHs, Total, Dissolved and Speciated Metals, VOCs, Methylmercury, Dioxins & Furans.	M, M ₅
	IDZ-E1-2m	Howe Sound IDZ station E1; 2 m below surface		
	IDZ-E1-SF	Howe Sound IDZ station E1; 2 m above the seafloor		
	IDZ-E2-0.5	Howe Sound IDZ station E2; 0.5 m below surface		
	IDZ-E2-2m	Howe Sound IDZ station E2; 2 m below surface		
	IDZ-E2-SF	Howe Sound IDZ station E2; 2 m above the seafloor		
	WQR1-0.5	Reference site 1; 0.5 m below surface		
WQR1-2m	Reference site 1; 2 m below surface			
WQR1-SF	Reference site 1; 2 m above the seafloor			

**Table 2 (continued):
Summary of PE-111578 Monitoring Samples Collected March 29 – April 4.**

Sampling Date	Sample	Description	Parameters Tested	Monitoring Frequency
April 3, 2026	SP-E-IN	East Sedimentation Pond influent monitored at cell 1 of the pond	Field Parameters.	D
	WWTP-E-IN	East WWTP at the influent meter box	Field Parameters.	D
	WWTP-E-OUT	East WWTP at the effluent meter box		
	SP-W-IN	West Sedimentation Pond influent monitored at cell 1 of the pond	Field Parameters.	D
	SP-W-OUT	West Sedimentation Pond clarified effluent discharge to Howe Sound, collected at the SP-W-OUT outfall structure	Field Parameters.	D
	2700GPM-IN	2700GPM TSS settling system at the influent meter box	Field Parameters.	P
	IDZ-W1-0.5	Howe Sound IDZ station W1; 0.5 m below surface	Field, Physical & General Parameters, VH & BTEX, EPHs & PAHs, Total, Dissolved and Speciated Metals, VOCs, Methylmercury, Dioxins & Furans.	M, M ₅
	IDZ-W1-2m	Howe Sound IDZ station W1; 2 m below surface		
	IDZ-W1-SF	Howe Sound IDZ station W1; 2 m above the seafloor		
	IDZ-W2-0.5	Howe Sound IDZ station W2; 0.5 m below surface		
	IDZ-W2-2m	Howe Sound IDZ station W2; 2 m below surface		
	IDZ-W2-SF	Howe Sound IDZ station W2; 2 m above the seafloor		
	WQR2-0.5	Reference site 2; 0.5 m below surface		
WQR2-2m	Reference site 2; 2 m below surface			
WQR2-SF	Reference site 2; 2 m above the seafloor			
April 4, 2026	SP-E-IN	East Sedimentation Pond influent monitored at cell 1 of the pond	Field Parameters.	D
	WWTP-E-IN	East WWTP at the influent meter box	Field Parameters.	D
	WWTP-E-OUT	East WWTP at the effluent meter box		
	SP-W-IN	West Sedimentation Pond influent monitored at cell 1 of the pond	Field Parameters.	D

Notes:

Monitoring frequency requirements under PE-111578 are indicated as follows:

D – daily monitoring of field parameters at WWTP and sedimentation pond influent and effluent stations.

M – monthly monitoring for all parameters at WWTP, sedimentation pond and receiving environment stations. Monthly monitoring for General parameters, except ammonia, nitrate and nitrite (*i.e.*, nitrogen species) are monitored weekly during blasting season.

M₂ – bi-monthly monitoring for physical parameters at WWTP and sedimentation pond stations.

M₅ – spring high-frequency (5-in-30) sampling for receiving environment stations.

W – weekly monitoring for metals, chromium speciation and methylmercury at WWTP and sedimentation pond influent and effluent stations, effective June 25, 2025.

P – periodic monitoring for targeted parameters that is supplementary to PE-111578 requirements.

3. Water Quality Results

3.1 Summary of Reported Results

Analytical results and associated field measurements included in this weekly report (Report #108) are listed below in Table 3, with additional field measurements presented in Table B-4 (Appendix B) and Table C-4 (Appendix C). Testing for methylmercury, dioxins, furans and toxicity may require four weeks or longer to complete. Analytical results not reported will be included in future weekly reports. Reporting of results is pending for the following samples and parameters:

- WWTP-E-OUT and SP-W-OUT collected February 9 (acute toxicity);
- IDZ-E1, IDZ-E2, IDZ-W1, IDZ-W2, WQR1 and WQR2 collected February 9 (chronic toxicity);
- IDZ-E1, IDZ-E2 and WQR1 collected March 4 (total mercury and methylmercury);
- IDZ-W1, IDZ-W2 and WQR2 collected March 16 (dioxins and furans);
- IDZ-E1, IDZ-E2 and WQR1 collected March 22 (dioxins and furans);
- IDZ-W1, IDZ-W2 and WQR2 collected March 23 (total mercury, methylmercury, dioxins and furans);
- OUT-02 collected March 24 (total mercury and methylmercury);
- IDZ-E1, IDZ-E2 and WQR1 collected March 27 (field and all analytical parameters);
- IDZ-W1, IDZ-W2 and WQR2 collected March 28 (field and all analytical parameters);
- OUT-02 collected March 30 (field and all analytical parameters);
- IDZ-E1, IDZ-E2 and WQR1 collected April 2 (field and all analytical parameters);
- IDZ-W1, IDZ-W2 and WQR2 collected April 3 (field and all analytical parameters).

**Table 3:
Summary of Analytical Results and Associated Field Measurements Included in Weekly Discharge and Compliance Report #108.**

Sample	Description	Sampling Date	Parameters Reported
IDZ-E1-0.5	Howe Sound IDZ station E1; 0.5 m below surface	March 4, 2026	Dioxins and Furans.
IDZ-E1-2m	Howe Sound IDZ station E1; 2 m below surface		
IDZ-E1-SF	Howe Sound IDZ station E1; 2 m above the seafloor		
IDZ-E2-0.5	Howe Sound IDZ station E2; 0.5 m below surface		
IDZ-E2-2m	Howe Sound IDZ station E2; 2 m below surface		
IDZ-E2-SF	Howe Sound IDZ station E2; 2 m above the seafloor		
WQR1-0.5	Reference site 1; 0.5 m below surface		
WQR1-2m	Reference site 1; 2 m below surface		
WQR1-SF	Reference site 1; 2 m above the seafloor		
IDZ-W1-0.5	Howe Sound IDZ station W1; 0.5 m below surface	March 16, 2026	Total Mercury and Methylmercury.
IDZ-W1-2m	Howe Sound IDZ station W1; 2 m below surface		
IDZ-W1-SF	Howe Sound IDZ station W1; 2 m above the seafloor		
IDZ-W2-0.5	Howe Sound IDZ station W2; 0.5 m below surface		
IDZ-W2-2m	Howe Sound IDZ station W2; 2 m below surface		
IDZ-W2-SF	Howe Sound IDZ station W2; 2 m above the seafloor		
WQR2-0.5	Reference site 2; 0.5 m below surface		
WQR2-2m	Reference site 2; 2 m below surface		
WQR2-SF	Reference site 2; 2 m above the seafloor		
IDZ-E1-0.5	Howe Sound IDZ station E1; 0.5 m below surface	March 22, 2026	Field, Physical and General Parameters, Total and Dissolved Metals, Hexavalent Chromium, VOCs, PAHs, and Methylmercury.
IDZ-E1-2m	Howe Sound IDZ station E1; 2 m below surface		
IDZ-E1-SF	Howe Sound IDZ station E1; 2 m above the seafloor		
IDZ-E2-0.5	Howe Sound IDZ station E2; 0.5 m below surface		
IDZ-E2-2m	Howe Sound IDZ station E2; 2 m below surface		
IDZ-E2-SF	Howe Sound IDZ station E2; 2 m above the seafloor		
WQR1-0.5	Reference site 1; 0.5 m below surface		
WQR1-2m	Reference site 1; 2 m below surface		
WQR1-SF	Reference site 1; 2 m above the seafloor		
IDZ-W1-0.5	Howe Sound IDZ station W1; 0.5 m below surface	March 23, 2026	Field, Physical and General Parameters, Total and Dissolved Metals, Hexavalent Chromium, VOCs, and PAHs.
IDZ-W1-2m	Howe Sound IDZ station W1; 2 m below surface		
IDZ-W1-SF	Howe Sound IDZ station W1; 2 m above the seafloor		
IDZ-W2-0.5	Howe Sound IDZ station W2; 0.5 m below surface		
IDZ-W2-2m	Howe Sound IDZ station W2; 2 m below surface		
IDZ-W2-SF	Howe Sound IDZ station W2; 2 m above the seafloor		
WQR2-0.5	Reference site 2; 0.5 m below surface		
WQR2-2m	Reference site 2; 2 m below surface		
WQR2-SF	Reference site 2; 2 m above the seafloor		
OUT-02	Non-contact water diversion ditch outlet	March 24, 2026	Field, Physical and General Parameters, Total and Dissolved Metals.
SP-W-IN	West Sedimentation Pond influent monitored at cell 1 of the pond	March 30, 2026	Field, Physical and General Parameters, Total and Dissolved Metals, Hexavalent Chromium, and Methylmercury.
SP-W-OUT	West Sedimentation Pond clarified effluent discharge to Howe Sound, collected at the manifold that combines effluent from the individual 2700GPM trains into a single discharge line configured with a SP- W- OUT sampling port		
SP-W-OUT	West Sedimentation Pond clarified effluent discharge to Howe Sound, at the SP-W-OUT outfall structure		
2700GPM-IN	2700GPM TSS settling system at the influent meter box		
W2700T3-OUT	2700GPM TSS settling system at the outlet of Train 3		
W2700T4-OUT	2700GPM TSS settling system at the outlet of Train 4		
SP-E-IN	East Sedimentation Pond influent monitored at cell 1 of the pond	March 31, 2026	Field, Physical and General Parameters, Total and Dissolved Metals, Hexavalent Chromium, and Methylmercury.
WWTP-E-IN	East WWTP at the influent meter box		
WWTP-E-OUT	East WWTP at the effluent meter box		
SP-E-IN	East Sedimentation Pond influent monitored at cell 1 of the pond	April 2, 2026	Field and Physical Parameters and Hexavalent Chromium.
WWTP-E-IN	East WWTP at the influent meter box		
WWTP-E-OUT	East WWTP at the effluent meter box		
COMB-WWTP-E-IN	Combined East WWTP influent from the concrete contact water treatment stream and the East Sedimentation Pond, collected from the heated frac tank		

3.2 Screening and Reporting Overview

Water quality and flow monitoring results are screened against operational minimum discharge objectives (MDOs) for the East WWTP, and PE-111578 discharge limits for sedimentation pond and 2700GPM TSS settling system stations. The East WWTP MDOs were set equal to Canadian Council of Ministers of the Environment (CCME) water quality guidelines (WQGs) and the PE-111578 discharge limits. Contact and non-contact water monitoring results are also screened against Canadian (Canadian Council of Ministers of the Environment, CCME), Federal (Environment and Climate Change Canada, ECCC) and BC water quality guidelines (WQGs). All water quality data are recorded in the Woodfibre LNG environmental monitoring database. However, for brevity, a sub-set of the results are presented in the weekly report appendices. Results are reported for parameters with a freshwater, estuarine or marine water quality guideline for the protection of aquatic life, parameters with a discharge limit, parameters of potential concern (*i.e.*, dioxins and furans) as well as other parameters that are relevant for water quality interpretation.

It is expected that samples of contact water and samples collected within the IDZ (*i.e.*, mixing zone) defined in PE-111578 for the authorized discharge locations may have parameter concentrations above baseline or background (*i.e.*, reference station) concentrations due to project influence. As well, for receiving environment samples, parameter concentrations above a WQG value but within the range of values observed in the baseline monitoring program are considered to represent the background conditions of the water.

The values used for screening are listed in the water quality tables provided in the appendices. Results above a screening value are highlighted in the tables. Samples collected from sedimentation pond effluent that is discharged to Howe Sound (monitored at stations SP-E-OUT and SP-W-OUT) are evaluated for non-compliance to PE-111578 discharge limits. Exceedances in contact water that remains on-site and is not discharged (e.g., WWTP influent and effluent, sedimentation pond influent, TSS settling system influent, and TSS settling system effluent that is recirculated) are screened for comparison purposes only, and exceedances in these samples do not represent non-compliance to the PE-111578 conditions.

Canadian, Federal and BC WQGs are not specified for dioxins and furans. The general term “dioxins and furans” refers to a total of 210 polychlorinated dibenzo-*p*-dioxin (PCDD) and polychlorinated dibenzofuran (PCDF) compounds. A sub-set of 17 of the most toxic PCDDs and PCDFs are typically evaluated for toxicity by converting the individual parameter concentrations to toxic equivalent (TEQ) values that are summed and evaluated as a single PCDD/F TEQ parameter. To address uncertainties for results reported as not detected, two PCDD/F TEQ values are reported. A “lower-bound PCDD/F TEQ” is calculated assuming a concentration of zero for results reported as not detected, therefore, if all 17 of the individual compounds in the sub-set are

not detected the lower-bound PCDD/F TEQ will equal zero. An “upper-bound PCDD/F TEQ” is calculated assuming a concentration equal to the detection limit for results reported as not detected. These two parameters span the range of possible TEQs if one or more of the PCDDs and PCDFs are reported as not detected.

The BC WQG for total mercury is a sample-specific calculated value that is based on the concentration of methylmercury in a sample. Although an approved BC WQG for the protection of aquatic life for methylmercury has not been explicitly established, the BC Ambient Water Quality Guidelines for Mercury Overview Report indicates the total mercury WQG is derived from a methylmercury concentration threshold of 0.0001 µg/L (0.1 ng/L) that is set at a concentration that protects fish from mercury bioaccumulation to levels that could harm wildlife that consumes fish. Therefore, if methylmercury results are reported, the 0.0001 µg/L value is presented as a WQG to support the interpretation of methylmercury results.

A summary of reported and pending results is provided in Section 3.1. Results for effluents from East WWTP, 2700GPM TSS settling system, and East and West Sedimentation Ponds are discussed in Section 3.3 and Section 3.4, respectively. The water quality monitored at non-contact water diversion ditch outlets and in the receiving environment is described in Section 3.5 to Section 3.7. Sediment samples are collected annually at stations IDZ-E-SED and IDZ-W-SED and are discussed in Section 3.7 when they are reported. Sediment samples were last collected July 2025 and the analytical results were presented in Report #82.

3.3 East Catchment

The east catchment water quality and flow monitoring results for stations at the East WWTP, the East Sedimentation Pond, and the authorized discharge location (SP-E-OUT) are discussed in this section and are tabulated in Appendix B.

Results are presented for field measurements of influent quality for the East Sedimentation Pond and East WWTP influent and effluent quality collected March 29 – April 4, as well as analytical results for samples collected March 31 (stations SP-E-IN, WWTP-E-IN and WWTP-E-OUT) and April 2 (stations SP-E-IN, WWTP-E-IN, COMB-WWTP-E-IN and WWTP-E-OUT).

Field measurements for the East WWTP effluent samples (WWTP-E-OUT) collected March 29 – April 4 and the analytical samples collected March 31 and April 2 met MDOs except for hexavalent chromium on March 31 (Appendix B, Table B-1, Table B-3 and Table B-4). Follow-up actions for hexavalent chromium are tracked in Table 4.

East WWTP effluent was directed to the East Sedimentation Pond and there was no discharge from the pond to Howe Sound from March 29 – April 4 (Section 1.2; Table B-5 of Appendix B). Therefore, water quality samples and field measurements were not collected at the SP-E-OUT discharge location.

3.4 West Catchment

The west catchment water quality monitoring results for stations at the West Sedimentation Pond, the 2700GPM TSS settling system, and the authorized discharge location (SP-W-OUT) are discussed in this section and are tabulated in Appendix C. Operation of the West WWTP is suspended (refer to Section 1.1) and monitoring results are therefore not available for the stations at this facility.

As discussed in Section 1.2, a total of 1,097 m³ of clarified sedimentation pond effluent from the 2700GPM TSS Settling System was intermittently discharged to Howe Sound from SP-W-OUT each day during the monitoring period (March 29 – April 4) except on March 31 and April 4.

Results are presented for field measurements of influent and effluent quality for the West Sedimentation Pond and the 2700GPM TSS settling system collected March 29 – April 4, as well as analytical samples collected March 30 (stations SP-W-IN, SP-W-OUT, 2700GPM-IN, W2700T3-OUT and W2700T4-OUT).

Field measurements collected March 29 – April 4 and the analytical samples collected at SP-W-OUT on March 30 met PE-111578 discharge limits and WQGs (Appendix C, Table C-2, Table C-3 and Table C-4).

3.5 Non-Contact Water Diversion Ditch Outlets

Analytical results were available at the time of reporting for the non-contact water diversion ditch outlet sample collected at station OUT-02 on March 24 (as discussed in Report #107). The analytical results, field parameters, and WQGs are summarized in Appendix D.

Parameter concentrations met WQGs except total aluminum and dissolved copper. Total aluminum (0.142 mg/L) was above the long-term WQG, and dissolved copper (0.00049 mg/L) was above the short- and long-term WQGs at OUT-02 on March 24. The total aluminum and dissolved copper concentrations measured at OUT-02 are within the range of values observed during the pre-construction baseline monitoring of diversion ditch water quality (0.0833 to 0.433 mg/L for total aluminum and 0.00020 to 0.00095 mg/L for dissolved copper).

3.6 Freshwater and Estuarine Water Receiving Environment

There are no outstanding analytical results for freshwater and estuarine water samples at the time of reporting.

3.7 Marine Water Receiving Environment

Analytical results and field measurements were available at the time of reporting for marine water samples collected at 0.5 and 2 m below the water surface and 2 m above the seafloor on March 22 (stations IDZ-E1, IDZ-E2 and WQR1) and on March 23 (stations IDZ-W1, IDZ-W2 and WQR2), as discussed in Report #107. The analytical results, field parameters, and WQGs are summarized in Appendix E.

Parameter concentrations met WQGs except dissolved oxygen, total boron and total copper in some samples (Appendix E; Table E-1 through Table E-4). Dissolved oxygen ranged from 6.33 to 7.88 mg/L and was below the lower limit of the WQG (8 mg/L) in samples collected at 2 m above the seafloor at IDZ-E1, IDZ-E2, IDZ-W1, IDZ-W2, and reference station WQR1. Total boron was above the WQG (1.2 mg/L) and ranged from 1.70 to 3.95 mg/L in all marine water samples collected at 2 m above the seafloor on March 22 and 23. Total copper was above the WQG at reference station WQR1 in the sample collected at 2 m below the surface.

Low concentrations of dissolved oxygen and elevated concentrations of total boron are indicative of influence from the deeper saline waters in the northern basin of Howe Sound and are a natural condition of marine water at the WDA monitoring stations. The dissolved oxygen and total boron concentrations observed at the IDZ monitoring stations are within concentration ranges that have been observed in the pre-construction baseline monitoring program (2.44 to 9.42 mg/L for dissolved oxygen and 1.47 to 8.38 mg/L for total boron) or within ranges observed at marine reference stations (2.44 to 12.11 mg/L for dissolved oxygen and 1.90 to 8.38 mg/L for total boron).

Methylmercury analytical results were available at the time of reporting for all marine water samples collected March 16 (stations IDZ-W1, IDZ-W2 and WQR2) and March 22 (stations IDZ-E1, IDZ-E2 and WQR1). For all samples, methylmercury concentrations ranged from <0.000020 to 0.000032 µg/L and met the WQG. The corresponding total mercury results met WQGs. Results are tabulated in Appendix E, Table E-4.

Dioxin and furans results were available at the time of reporting for marine samples collected at 0.5 and 2 m below the water surface and 2 m above the seafloor on March 4 (stations IDZ-E1, IDZ-E2 and WQR1), as discussed in Report #104. For all samples, the lower bound PCDD/F TEQ concentrations ranged from 0 to 0.0238 pg/L and the upper bound PCDD/F TEQ concentrations ranged from 1.01 to 2.33 pg/L. The lower and upper bound PCDD/F TEQ concentrations were within the concentration ranges observed in the pre-construction baseline monitoring program (0 to 2.64 pg/L and 0 to 7.06 pg/L, respectively) or within background ranges observed at marine reference stations (0 to 0.941 pg/L and 0.499 to 5.65 pg/L, respectively). Results are tabulated in Appendix E, Table E-5.

3.8 Quality Control

This section presents the results of the quality control (QC) evaluation for the PE-111578 weekly report (Table 4). The evaluation includes a review of field and lab QC, completeness of the weekly report (*e.g.*, pending data), completeness of the monitoring program, confirmation of recordkeeping, evaluation of compliance and review of water management activities. Items flagged for follow-up in Section 3 are also tracked in Table 4. Any items flagged for follow-up are carried forward to future reports until they are closed.

Table 4:
Weekly Report QC Evaluations and Ongoing Items

QC Procedure	Observation	Investigation/Resolution
Reporting Period (March 29 – April 4, Report #108)		
Authorized Works and Monitoring Program Evaluation	The authorized works and monitoring stations have not been established as described in PE-111578.	The PE-111578 authorized works for water management have been constructed, except for some of the conveyance ditches, which require completion of site grading prior to installation. Sumps, pumps and hoses are used for temporary conveyance until the ditches are completed. The lower reach of East Creek was temporarily diverted through Outfall 11 from September 17, 2024 to November 18, 2025. As November 19, 2025, East Creek flows have been returned to the lower Channel that discharges to Howe Sound through the Outfall 12 culverts (OUT-12). The culvert at OUT-01 is being replaced and diversion water flows to OUT-01 have been redirected to OUT-02. Outfall 11 (OUT-11) has been constructed but is not in use. All monitoring stations have been established except at SP-E-IN-1, SP-E-IN-2, SP-W-IN-1 and SP- W- IN- 2 where substitute stations are established in lieu of those listed in PE-111578 (refer to Section 2). This item remains open.
Report #108: Pending Data	Analytical results not reported.	Field records and analytical results for the non-contact water diversion ditch sample collected March 30 and for receiving environment samples collected April 2 and 3 are pending and will be included in future weekly reports when available. This item remains open.
Ongoing Items from Previous Weekly Reports		
Report #98: WWTP Performance Evaluation	Hexavalent chromium above the MDO.	This item was first noted in Report #98. Hexavalent chromium concentrations ranged from 0.00081 to 0.00321 mg/L in the WWTP-E-OUT samples collected from January 20 through February 26, which were frequently above the MDO (0.0015 mg/L). Hexavalent chromium concentrations were 0.00096, 0.00076, 0.00087, <0.00050 and 0.00062 mg/L in the WWTP-E-OUT samples collected February 27, March 5, 10, 18 and 24, respectively, and met the MDO; however, hexavalent chromium was above the MDO on March 31 (0.00235 mg/L). The WWTP treatment performance for hexavalent chromium will continue to be evaluated in April 2026. This item remains open.
Report #101: WWTP Performance Evaluation	Total copper above the MDO.	This item was first noted in Report #101. Total copper concentrations were 0.00443, 0.00493 and 0.00451 mg/L in the samples collected at WWTP-E-OUT on February 12, 14 and 27 and were above the MDO (0.0043 mg/L). Total copper met the MDO in the subsequent samples collected at WWTP-E-OUT on March 5, 10, 18, 24 and 31 (0.00150, 0.00137, 0.00150, 0.00081 and 0.00363 mg/L, respectively). Review of the WWTP treatment performance indicates that the MDO exceedances observed in February were isolated events. This item is closed.
Report #101: Pending Data	Analytical results not reported.	Chronic toxicity results for receiving environment samples and acute toxicity results for treated water samples collected February 9 are pending and will be included in future weekly reports when available. This item remains open.
Report #104: Pending Data	Analytical results not reported.	Previously pending dioxins and furans results for receiving environment samples collected March 4 are included in Report #108. Total mercury and methylmercury results for these samples are pending and will be included in future weekly reports when available. This item remains open.
Report #106: Potential Project Influence	Total aluminum, fluoride and hexavalent chromium at East Creek above WQGs and the baseline concentration ranges.	At the East Creek station (SW-04) on March 1, total aluminum, fluoride, and hexavalent chromium concentrations (1.83, 0.261, and 0.00184 mg/L) were 3.2, 2.2, and 1.8 times greater than their WQGs, and 6.9, 2.6, and 5.9 times greater than their pre-construction baseline maxima (0.264, <0.100, and 0.00031 mg/L), respectively. Potential influences to East Creek water quality at station SW-04 are being reviewed. This item remains open.
Report #106: Pending Data	Analytical results not reported.	Previously pending total mercury and methylmercury results for receiving environment samples collected March 16 are included in Report #108. Dioxins and furans results for these samples are pending and will be included in future weekly reports when available. This item remains open.
Report #107: Pending Data	Analytical results not reported.	Previously pending field records and analytical results for receiving environment samples collected March 22 and 23 and for the non-contact water diversion ditch sample collected March 24 are included in Report #108. Field records and analytical results for receiving environment samples collected March 27 and 28, total mercury and methylmercury results for receiving environment and non-contact water diversion ditch samples collected March 23 and 24, respectively, as well as dioxins and furans results for receiving environment samples collected March 22 and 23 are pending and will be included in future weekly reports when available. This item remains open.

Notes:

Result QA/QC screening includes the evaluation of field and lab QC results, comparison of total and dissolved metal results and review for modified detection limits.

Pending data are outstanding results from monitoring samples reported in the current or previous weekly reports.

Authorized works and monitoring program evaluation is an assessment of the completeness of the authorized works and monitoring program compared to PE-111578 specified or implied requirements.

WWTP performance evaluation is an assessment of WWTP effluent quality compared to operational MDOs.

Data QC indicates an evaluation of data trends or inter-parameter relationships that suggest a test result may not be representative of water quality at the time of monitoring.

Non-compliant discharge indicates exceedance of a discharge limit or a discharge that bypasses the sedimentation pond discharge location.

Potential project influence is an assessment that water quality at creek and Howe Sound baseline stations are above the baseline concentration range and may indicate project influence at these stations.

4. Closure

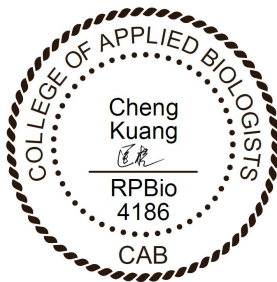
This weekly report is a desktop review by Lorax of the PE-111578 discharge and compliance monitoring program records, reports and results provided by Woodfibre LNG and prime contractor McDermott International and their sub-contractors. The records reviewed and analyzed by Lorax include ALS Environmental laboratory test reports and site reports (from Roe Environmental, LB LNG, McDermott and Woodfibre LNG). Verbal or electronic communications between Lorax, and Roe Environmental, LB LNG, McDermott, and Woodfibre LNG staff are conducted as needed to confirm the information presented in this report.

Regards,

LORAX ENVIRONMENTAL SERVICES LTD.



Holly Pelletier, B.Sc., GIT.
Environmental Geoscientist



Cheng Kuang, M.Sc., RPBio.
Environmental Scientist

***Appendix A:
Figures and Site Images***



LEGEND Freshwater Monitoring Station Marine Water Monitoring Station Clean Water Diversion Discharge Station Sedimentation Pond Monitoring Stations (Water Quality) Wastewater Treatment Plant (WWTP) Certified Project Area Watercourse Non-Contact Ditch Culvert / Outfall / Pipeline Non-Contact Water Transfer Hose Bathymetry Contour (Major: 50m) Bathymetry Contour (Minor: 10m)	DATE SAVED: Apr 10, 2026 DRAWN BY: DM REVIEWED: PM VERSION: 1	Coordinate System: NAD 1983 UTM Zone 10N Projection: Transverse Mercator Datum: North American 1983 Units: Metre 1:6,000 	CLIENT: 	PROJECT: Woodfibre LNG Project Construction Phase TITLE: Site Layout and Water Quality Monitoring Stations for PE-111578 (April 4, 2026) PROJECT #: A825-1 FIGURE: 1
--	--	---	------------------------	---



Figure 2: East Catchment contact water management facilities (March 29 – April 4).



Figure 3: West Catchment contact water management facilities (March 29 – April 4).

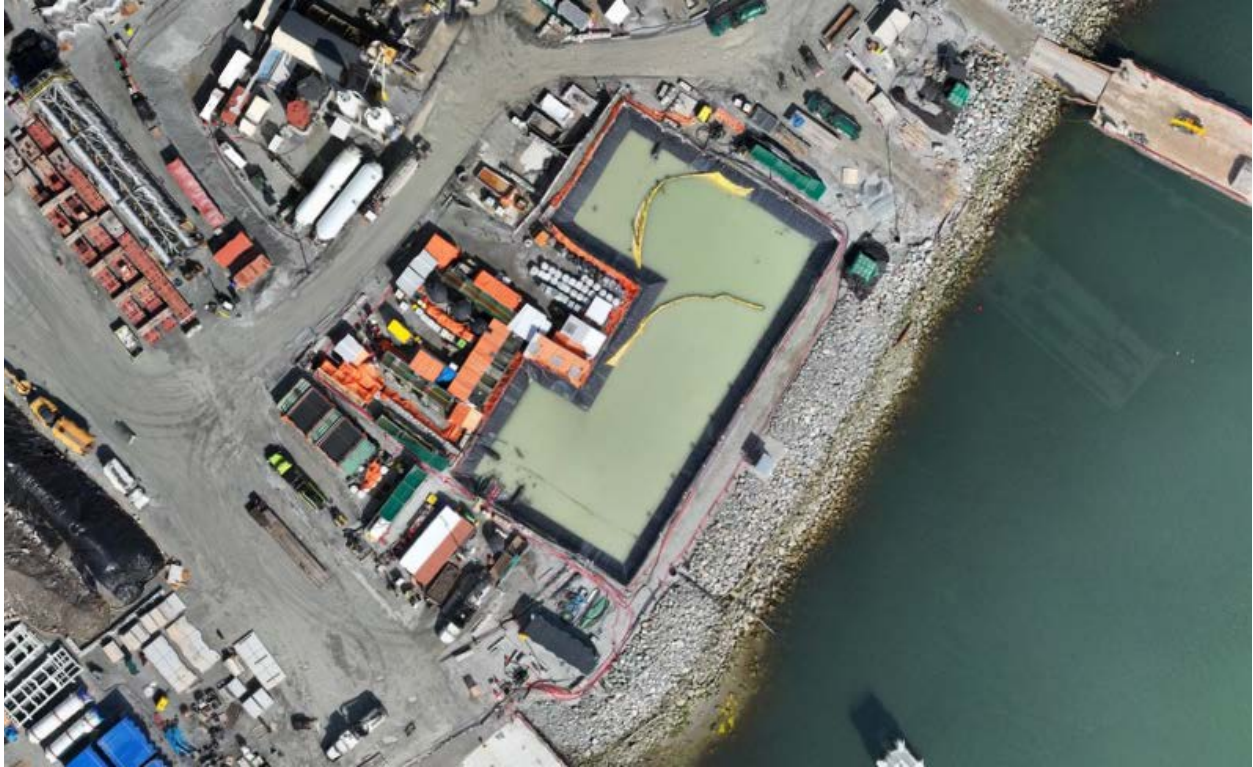


Figure 4: Aerial view of the East Sedimentation Pond (April 4, 2026). The East WWTP is located on the left side of the pond.



Figure 5: Aerial view of the West Sedimentation Pond (April 4, 2026).

***Appendix B:
East Catchment Monitoring Results***

**Table B-1:
East WWTP Influent and Effluent Analytical Results Received at the Time of Reporting.**

Parameter	Unit	Lowest Applicable Guideline ¹		PE-111578 Discharge Limit	Station WWTP-E-IN	Station WWTP-E-OUT	Station WWTP-E-IN	Station COMB-WWTP-E-IN	Station WWTP-E-OUT
					Influent	Effluent	Influent	Influent	Effluent
					WWTP-E-IN	WWTP-E-OUT	WWTP-E-IN	COMB-WWTP-E-IN	WWTP-E-OUT
					VA26A7676-002	VA26A7676-003	VA26A7942-002	VA26A7942-003	VA26A7942-004
					2026-03-31 9:11	2026-03-31 15:07	2026-04-02 8:19	2026-04-02 8:32	2026-04-02 14:19
General Parameters									
pH - Field	pH units	- ²	-	5.5 - 9.0	7.40	7.33	7.33	6.00	6.30
Specific Conductivity - Field	µS/cm	-	-	-	736	867	713	1760	1736
Temperature - Field	°C	-	-	-	8.1	11	9.3	8.5	10.0
Salinity - Field	ppt	-	-	-	0.36	0.43	0.35	0.90	0.88
Turbidity - Field	NTU	-	-	-	9.15	3.53	127.07	83.93	3.62
TSS	mg/L	-	-	25 or 75 ⁵	4.7	<3.0	75.0	69.4	<3.0
Dissolved Oxygen - Field	mg/L	≥8	-	-	13.86	12.92	12.17	12.10	11.82
Total Hardness	mg/L	-	-	-	25.8	13.3	-	-	-
Dissolved Hardness	mg/L	-	-	-	25.5	11.7	-	-	-
Anions and Nutrients									
Sulphate	mg/L	-	-	-	139	136	-	-	-
Chloride	mg/L	-	-	-	4.38	4.33	-	-	-
Fluoride	mg/L	-	1.5	-	0.141	0.123	-	-	-
Ammonia (N-NH ₃)	mg/L	12 ³	78-83 ³	-	<0.0050	0.0074	-	-	-
Nitrite (N-NO ₂)	mg/L	-	-	-	0.0054	0.0051	-	-	-
Nitrate (N-NO ₃)	mg/L	3.7	339	-	0.181	0.196	-	-	-
Total Organic Carbon (TOC)	mg/L	-	-	-	2.72	2.81	-	-	-
Dissolved Organic Carbon (DOC)	mg/L	-	-	-	2.72	2.64	-	-	-
Total Metals									
Aluminum, total (T-Al)	mg/L	-	-	-	0.476	0.172	-	-	-
Antimony, total (T-Sb)	mg/L	-	0.27 ⁴	-	0.00104	0.00099	-	-	-
Arsenic, total (T-As)	mg/L	0.0125	-	-	0.00204	0.00215	-	-	-
Barium, total (T-Ba)	mg/L	-	-	-	0.00696	0.00198	-	-	-
Beryllium, total (T-Be)	mg/L	0.1	-	-	<0.000020	<0.000020	-	-	-
Boron, total (T-B)	mg/L	1.2	-	-	0.034	0.024	-	-	-
Cadmium, total (T-Cd)	mg/L	0.00012	-	-	<0.0000250	<0.0000350	-	-	-
Chromium, total (T-Cr)	mg/L	-	-	-	0.00286	0.00251	-	-	-
Cobalt, total (T-Co)	mg/L	-	-	-	0.00011	<0.00010	-	-	-
Copper, total (T-Cu)	mg/L	- ²	- ²	0.0043	0.00199	0.00363	-	-	-
Iron, total (T-Fe)	mg/L	-	-	-	0.198	0.075	-	-	-
Lead, total (T-Pb)	mg/L	- ²	- ²	0.0035	0.000466	0.000343	-	-	-
Manganese, total (T-Mn)	mg/L	0.1	-	-	0.0115	0.00544	-	-	-
Molybdenum, total (T-Mo)	mg/L	-	-	-	0.0634	0.0611	-	-	-
Nickel, total (T-Ni)	mg/L	0.0083	-	-	<0.00050	<0.00050	-	-	-
Selenium, total (T-Se)	mg/L	0.002	-	-	0.000398	0.000215	-	-	-
Silver, total (T-Ag)	mg/L	0.0005	0.0037	-	<0.000010	<0.000010	-	-	-
Thallium, total (T-Tl)	mg/L	-	-	-	0.00001	0.000014	-	-	-
Uranium, total (T-U)	mg/L	-	-	-	0.014	0.0215	-	-	-
Vanadium, total (T-V)	mg/L	- ²	-	0.0081	0.00331	0.0031	-	-	-
Zinc, total (T-Zn)	mg/L	- ²	- ²	0.0133	0.0054	0.0085	-	-	-
Hexavalent Chromium, total	mg/L	0.0015	-	-	<u>0.00239</u>	<u>0.00235</u>	<u>0.00175</u>	<u>0.00154</u>	0.00073
Dissolved Metals									
Cadmium, dissolved (D-Cd)	mg/L	-	-	-	<0.0000200	<0.0000150	-	-	-
Copper, dissolved (D-Cu)	mg/L	-	-	-	0.00156	0.00154	-	-	-
Iron, dissolved (D-Fe)	mg/L	-	-	-	0.015	0.011	-	-	-
Lead, dissolved (D-Pb)	mg/L	-	-	-	0.000069	0.000051	-	-	-
Manganese, dissolved (D-Mn)	mg/L	-	-	-	0.00419	0.00248	-	-	-
Nickel, dissolved (D-Ni)	mg/L	-	-	-	<0.00050	<0.00050	-	-	-
Strontium, dissolved (D-Sr)	mg/L	-	-	-	0.064	0.0413	-	-	-
Vanadium, dissolved (D-V)	mg/L	-	-	-	0.00288	0.00308	-	-	-
Zinc, dissolved (D-Zn)	mg/L	-	-	-	0.0024	0.0014	-	-	-
Polycyclic Aromatic Hydrocarbons (PAHs)									
Acenaphthene	mg/L	0.006	-	-	-	-	-	-	-
Acridine	mg/L	-	-	-	-	-	-	-	-
Anthracene	mg/L	-	-	-	-	-	-	-	-
Benz(a)anthracene	mg/L	-	-	-	-	-	-	-	-
Benzo(a)pyrene	mg/L	0.00001	-	-	-	-	-	-	-
Chrysene	mg/L	0.0001	-	-	-	-	-	-	-
Fluoranthene	mg/L	-	-	-	-	-	-	-	-
Fluorene	mg/L	0.012	-	-	-	-	-	-	-
1-methylnaphthalene	mg/L	0.001	-	-	-	-	-	-	-
2-methylnaphthalene	mg/L	0.001	-	-	-	-	-	-	-
Naphthalene	mg/L	0.001	-	-	-	-	-	-	-
Phenanthrene	mg/L	-	-	-	-	-	-	-	-
Pyrene	mg/L	-	-	-	-	-	-	-	-
Quinoline	mg/L	-	-	-	-	-	-	-	-
Volatile Organic Compounds (VOCs)									
Benzene	mg/L	0.59	6.0	-	-	-	-	-	-
Ethylbenzene	mg/L	0.07	1.0	-	-	-	-	-	-
Methyl-tert-butyl-ether	mg/L	5	0.44	-	-	-	-	-	-
Styrene	mg/L	-	-	-	-	-	-	-	-
Toluene	mg/L	0.03	3.0	-	-	-	-	-	-
Total Xylenes	mg/L	0.07	1.0	-	-	-	-	-	-
Chlorobenzene	mg/L	0.025	-	-	-	-	-	-	-
1,2-Dichlorobenzene	mg/L	0.042	-	-	-	-	-	-	-

Notes:

East catchment influents and East WWTP effluent were not discharged to Howe Sound. Results above screening values are only highlighted for comparative purposes.

Non-detect results are screened using the detection limit value.

Results **underlined in bold italics** exceed the applicable long-term water quality guideline for the protection of marine water aquatic life.

Shaded results exceed the applicable short-term water quality guideline for the protection of marine water aquatic life.

Results in **orange text** exceed the PE-111578 East Sedimentation Pond Discharge Limit.

The East Catchment did not discharge during the monitoring period (March 29 – April 4).

¹ The lowest applicable guidelines from approved or working BC WQGs, Canadian (CCME) WQGs and Federal WQGs for marine waters.

² The WQG was not evaluated for parameters with discharge limits.

³ The BC WQG for total ammonia is salinity, pH and temperature dependent; see Tables 27E and 27F in BC WQG guidance document.

⁴ The working BC WQG for trivalent antimony [SB(III)] is 0.27 mg/L and is applied to total antimony results.

⁵ The PE-111578 discharge limit for TSS is 25 mg/L under dry conditions and 75 mg/L for each day of Wet Conditions and for one day following the end of Wet Conditions.

**Table B-2:
East Sedimentation Pond Influent and Effluent Analytical Results Received at the Time of Reporting.**

Parameter	Unit	Lowest Applicable Guideline ¹		PE-111578 Discharge Limit	Station SP-E-IN	Station SP-E-IN
					Influent	Influent
		SP-E-IN	SP-E-IN			
		VA26A7676-001 2026-03-31 8:56	VA26A7942-001 2026-04-02 8:12			
General Parameters						
pH - Field	pH units	- ²	-	5.5 - 9.0	7.11	6.84
Specific Conductivity - Field	µS/cm	-	-	-	793	1044
Temperature - Field	°C	-	-	-	9.9	9.8
Salinity - Field	ppt	-	-	-	0.39	0.52
Turbidity - Field	NTU	-	-	-	5.27	80.41
TSS	mg/L	-	-	25 or 75 ⁵	4.7	51.8
Dissolved Oxygen - Field	mg/L	≥8	-	-	12.25	11.80
Total Hardness	mg/L	-	-	-	17.4	-
Dissolved Hardness	mg/L	-	-	-	16.4	-
Anions and Nutrients						
Sulphate	mg/L	-	-	-	134	-
Chloride	mg/L	-	-	-	4.4	-
Fluoride	mg/L	-	1.5	-	0.126	-
Ammonia (N-NH ₃)	mg/L	29 ³	191 ³	-	0.0052	-
Nitrite (N-NO ₂)	mg/L	-	-	-	0.0051	-
Nitrate (N-NO ₃)	mg/L	3.7	339	-	0.197	-
Total Organic Carbon (TOC)	mg/L	-	-	-	2.67	-
Dissolved Organic Carbon (DOC)	mg/L	-	-	-	2.63	-
Total Metals						
Aluminum, total (T-Al)	mg/L	-	-	-	0.259	-
Antimony, total (T-Sb)	mg/L	-	0.27 ⁴	-	0.00104	-
Arsenic, total (T-As)	mg/L	0.0125	-	-	0.00201	-
Barium, total (T-Ba)	mg/L	-	-	-	0.00364	-
Beryllium, total (T-Be)	mg/L	0.1	-	-	<0.000020	-
Boron, total (T-B)	mg/L	1.2	-	-	0.029	-
Cadmium, total (T-Cd)	mg/L	0.00012	-	-	<0.0000200	-
Chromium, total (T-Cr)	mg/L	-	-	-	0.00257	-
Cobalt, total (T-Co)	mg/L	-	-	-	<0.00010	-
Copper, total (T-Cu)	mg/L	- ²	- ²	0.0043	0.00151	-
Iron, total (T-Fe)	mg/L	-	-	-	0.107	-
Lead, total (T-Pb)	mg/L	- ²	- ²	0.0035	0.000232	-
Manganese, total (T-Mn)	mg/L	0.1	-	-	0.00727	-
Molybdenum, total (T-Mo)	mg/L	-	-	-	0.0609	-
Nickel, total (T-Ni)	mg/L	0.0083	-	-	<0.00050	-
Selenium, total (T-Se)	mg/L	0.002	-	-	0.000196	-
Silver, total (T-Ag)	mg/L	0.0005	0.0037	-	<0.000010	-
Thallium, total (T-Tl)	mg/L	-	-	-	0.000012	-
Uranium, total (T-U)	mg/L	-	-	-	0.013	-
Vanadium, total (T-V)	mg/L	- ²	-	0.0081	0.00319	-
Zinc, total (T-Zn)	mg/L	- ²	- ²	0.0133	<0.0030	-
Hexavalent Chromium, total	mg/L	0.0015	-	-	0.00255	0.00162
Dissolved Metals						
Cadmium, dissolved (D-Cd)	mg/L	-	-	-	<0.0000150	-
Copper, dissolved (D-Cu)	mg/L	-	-	-	0.00123	-
Iron, dissolved (D-Fe)	mg/L	-	-	-	0.011	-
Lead, dissolved (D-Pb)	mg/L	-	-	-	<0.000050	-
Manganese, dissolved (D-Mn)	mg/L	-	-	-	0.00344	-
Nickel, dissolved (D-Ni)	mg/L	-	-	-	<0.00050	-
Strontium, dissolved (D-Sr)	mg/L	-	-	-	0.0508	-
Vanadium, dissolved (D-V)	mg/L	-	-	-	0.00293	-
Zinc, dissolved (D-Zn)	mg/L	-	-	-	0.0015	-
Polycyclic Aromatic Hydrocarbons (PAHs)						
Acenaphthene	mg/L	0.006	-	-	-	-
Acridine	mg/L	-	-	-	-	-
Anthracene	mg/L	-	-	-	-	-
Benz(a)anthracene	mg/L	-	-	-	-	-
Benzo(a)pyrene	mg/L	0.00001	-	-	-	-
Chrysene	mg/L	0.0001	-	-	-	-
Fluoranthene	mg/L	-	-	-	-	-
Fluorene	mg/L	0.012	-	-	-	-
1-methylnaphthalene	mg/L	0.001	-	-	-	-
2-methylnaphthalene	mg/L	0.001	-	-	-	-
Naphthalene	mg/L	0.001	-	-	-	-
Phenanthrene	mg/L	-	-	-	-	-
Pyrene	mg/L	-	-	-	-	-
Quinoline	mg/L	-	-	-	-	-
Volatile Organic Compounds (VOCs)						
Benzene	mg/L	0.59	6.0	-	-	-
Ethylbenzene	mg/L	0.07	1.0	-	-	-
Methyl-tert-butyl-ether	mg/L	5	0.44	-	-	-
Styrene	mg/L	-	-	-	-	-
Toluene	mg/L	0.03	3.0	-	-	-
Total Xylenes	mg/L	0.07	1.0	-	-	-
Chlorobenzene	mg/L	0.025	-	-	-	-
1,2-Dichlorobenzene	mg/L	0.042	-	-	-	-

Notes:

East catchment influents and East WWTP effluent were not discharged to Howe Sound. Results above screening values are only highlighted for comparative purposes.

Non-detect results are screened using the detection limit value.

Results **underlined in bold italics** exceed the applicable long-term water quality guideline for the protection of marine water aquatic life.

Shaded results exceed the applicable short-term water quality guideline for the protection of marine water aquatic life.

Results in **orange text** exceeded the PE-111578 East Sedimentation Pond Discharge Limit.

The East Catchment did not discharge during the monitoring period (March 29 – April 4).

¹ The lowest applicable guidelines from approved or working BC WQGs, Canadian (CCME) WQGs and Federal WQGs for marine waters.

² The WQG was not evaluated for parameters with discharge limits.

³ The BC WQG for total ammonia is salinity, pH and temperature dependent; see Tables 27E and 27F in BC WQG guidance document.

⁴ The working BC WQG for trivalent antimony [SB(III)] is 0.27 mg/L and is applied to total antimony results.

⁵ The PE-111578 discharge limit for TSS is 25 mg/L under dry conditions and 75 mg/L for each day of Wet Conditions and for one day following the end of Wet Conditions.

**Table B-3:
East Catchment Methylmercury and Corresponding Total Mercury Results Received at the Time of Reporting.**

Parameter					Total Methylmercury	Total Mercury
Unit					µg/L	µg/L
Lowest Applicable Guideline ¹					0.0001 ²	0.0049-0.0058 ^{3,4}
Station	Water Type	Sample ID	Lab ID	Sampling Date		
Influent						
SP-E-IN	Influent	SP-E-IN	VA26A7676-001	2026-03-31	0.000072	0.00353
WWTP-E-IN	Influent	WWTP-E-IN	VA26A7676-002	2026-03-31	0.000071	0.00415
Effluent						
WWTP-E-OUT	Effluent	WWTP-E-OUT	VA26A7676-003	2026-03-31	0.000054	0.00299

Notes:

East catchment influents and effluents were not discharged to Howe Sound. Results above screening values are only highlighted for comparative purposes. Non-detect results are screened using the detection limit value.

Results ***underlined in bold italics*** exceed the applicable long-term water quality guideline for the protection of marine aquatic life.

¹ The lowest applicable guidelines from approved or working BC WQGs, Canadian (CCME) WQGs and Federal WQGs.

² From BC Ambient Water Quality Guidelines for Mercury Overview Report. The methylmercury concentration threshold of 0.0001 µg/L (0.1 ng/L) is indicated as a WQG for the protection of wildlife and is set at a concentration that protects fish from mercury bioaccumulation to a level that may harm wildlife that consume fish.

³ CCME guideline for total mercury = 0.016 µg/L.

⁴ When MeHg ≤ 0.5% of total Hg, BC WQG = 0.02 µg/L. When MeHg > 0.5% of total Hg, BC WQG = 0.0001/(MeHg/Total Hg). Detection limit values are used to calculate the WQG for result reported as not detected.

**Table B-4:
East Catchment Field Measurements Collected During the Monitoring Period (March 29 – April 4).**

Parameter			Temperature	Dissolved Oxygen (DO)	Salinity	Turbidity	Estimated TSS ³	pH	Specific Conductivity	Visibility of Sheen
Unit			°C	mg/L	ppt	NTU	mg/L	s.u.	µS/cm	
PE-111578 Discharge Limit			-	-	-	-	25 or 75 ⁶	5.5 - 9.0	-	-
Lowest Applicable Guideline ¹			-	≥8	-	-	- ²	- ²	-	-
Station ID	Water Type	Date								
Influent ⁴										
SP-E-IN	Influent	2026-03-29 14:55	9.6	12.15	0.38	6.39	7.8	7.19	767	No
SP-E-IN	Influent	2026-03-30 14:18	10.8	12.15	0.38	6.90	8.1	7.26	778	No
SP-E-IN	Influent	2026-03-31 8:56	9.9	12.25	0.39	5.27	6.9	7.11	793	No
SP-E-IN	Influent	2026-04-01 10:54	8.6	11.95	0.29	86.32	67.4	7.22	586	No
SP-E-IN	Influent	2026-04-02 8:12	9.8	11.80	0.52	80.41	63.0	6.84	1044	No
SP-E-IN	Influent	2026-04-03 10:25	9.7	11.82	0.51	49.48	39.9	7.21	1027	No
SP-E-IN	Influent	2026-04-04 11:20	12.1	11.55	0.57	65.13	51.6	7.31	1145	No
WWTP-E-IN	Influent	2026-03-29 15:06	9.2	13.11	0.32	12.85	12.6	7.25	652	No
WWTP-E-IN	Influent	2026-03-30 14:49	9.7	12.74	0.27	37.06	30.6	8.45	558	No
WWTP-E-IN	Influent	2026-03-31 9:11	8.1	13.86	0.36	9.15	9.8	7.40	736	No
WWTP-E-IN	Influent	2026-04-01 11:04	9.7	13.56	0.36	69.48	54.8	7.12	740	No
WWTP-E-IN	Influent	2026-04-02 8:19	9.3	12.17	0.35	127.07	97.8	7.33	713	No
WWTP-E-IN	Influent	2026-04-03 10:22	9.9	11.47	0.43	79.31	62.1	6.82	877	No
WWTP-E-IN	Influent	2026-04-04 11:23	11.3	11.40	0.55	59.20	47.2	7.34	1093	No
Effluent ⁵										
WWTP-E-OUT	Effluent	2026-03-29 15:05	9.8	11.86	0.39	4.87	6.6	6.79	786	No
WWTP-E-OUT	Effluent	2026-03-30 14:26	10.0	11.63	0.39	2.06	4.5	6.63	791	No
WWTP-E-OUT	Effluent	2026-03-31 15:07	11.0	12.92	0.43	3.53	5.6	7.33	867	No
WWTP-E-OUT	Effluent	2026-04-01 11:00	9.8	10.88	0.50	3.89	5.9	6.89	999	No
WWTP-E-OUT	Effluent	2026-04-02 8:25	9.8	12.08	0.88	1.64	4.2	6.33	1736	No
WWTP-E-OUT	Effluent	2026-04-02 14:19	10.0	11.82	0.88	3.62	5.7	6.30	1736	No
WWTP-E-OUT	Effluent	2026-04-03 10:20	10.4	12.25	0.81	1.75	4.3	6.73	1595	No
WWTP-E-OUT	Effluent	2026-04-04 11:26	11.5	11.39	1.08	1.59	4.2	6.81	2099	No

Notes:

The east catchment did not discharge to Howe Sound during the monitoring period (March 29 – April 4). Results above screening values are highlighted for comparative purposes.

Results ***underlined in bold italics*** exceed the applicable long-term water quality guideline for the protection of marine water aquatic life.

Shaded results exceed the applicable short-term water quality guideline for the protection of marine water aquatic life.

Results in **orange text** exceed the PE-111578 East Sedimentation Pond Discharge Limit.

¹ The lowest applicable guidelines from approved or working BC WQGs, Canadian (CCME) WQGs and Federal WQGs.

² The WQG was not evaluated for parameters with discharge limits.

³ TSS concentration is estimated from field turbidity measurements using a site-specific relationship $TSS = 0.7458 * [turbidity \text{ as NTU}] + 3$.

⁴ Daily field measurements for station SP-E-IN were collected from cell 1 of the East Sedimentation Pond.

⁵ There was no discharge at the authorized discharge location (SP-E-OUT) during the monitoring period (March 29 – April 4), therefore daily field measurements for SP-E-OUT were not collected on those days.

⁶ The PE-111578 discharge limit for TSS is 25 mg/L under dry conditions and 75 mg/L for each day of Wet Conditions and for one day following the end of Wet Conditions.

**Table B-5:
East Catchment Daily Discharge Volumes for the Monitoring Period (March 29 – April 4).**

	East Sedimentation Pond Effluent	Transfer to West Sedimentation Pond	East WWTP Treated Effluent (Station WWTP-E-OUT) ²	Discharge to Howe Sound (Station SP-E-OUT)
Units	m ³	m ³	m ³	m ³
PE-111578 Discharge Limit	-	-	1,100	- ¹
Date				
2026-03-29	0	0	176	0
2026-03-30	0	0	259	0
2026-03-31	0	0	343	0
2026-04-01	0	0	222	0
2026-04-02	0	0	285	0
2026-04-03	0	0	255	0
2026-04-04	0	0	259	0

Notes:

Results in **orange text** exceed the PE-111578 East Sedimentation Pond Discharge Limit.

¹ As noted in PE-111578 Condition 2.1.4, the annual average authorized discharge rate from the East Sedimentation Pond to Howe Sound was set to 650 m³/day for the purpose of calculating discharge fees as required by the Permit and Approval Fees and Charges Regulation. Therefore, the annual average authorized discharge rate is not evaluated as a discharge limit.

² East WWTP treated effluent was recirculated to the East Sedimentation Pond.

***Appendix C:
West Catchment Monitoring Results***

**Table C-1:
West 2700GPM TSS Settling System Influent and Effluent Analytical Results Received at the Time of Reporting.**

Parameter	Unit	Lowest Applicable Guideline ¹		PE-111578 Discharge Limit	Station 2700GPM-IN	Station W2700T3-OUT	Station W2700T4-OUT
					Influent	Effluent	Effluent
		W2700-IN	W2700T3-OUT		W2700T4-OUT		
		VA26A7527-002	VA26A7527-003		VA26A7527-004		
		Long Term	Short Term		2026-03-30 9:57	2026-03-30 10:19	2026-03-30 10:31
General Parameters							
pH - Field	pH units	- ²	-	5.5 - 9.0	7.50	7.56	7.61
Specific Conductivity - Field	µS/cm	-	-	-	152	163	159
Temperature - Field	°C	-	-	-	7.5	7.9	8.0
Salinity - Field	ppt	-	-	-	0.07	0.08	0.08
Turbidity - Field	NTU	-	-	-	13.32	2.78	3.09
TSS	mg/L	-	-	25 or 75 ⁵	9.9	<3.0	<3.0
Dissolved Oxygen - Field	mg/L	≥8	-	-	12.14	12.32	12.68
Total Hardness	mg/L	-	-	-	33.3	33.0	32.7
Dissolved Hardness	mg/L	-	-	-	32.4	32.9	32.9
Anions and Nutrients							
Sulphate	mg/L	-	-	-	28.1	31.1	29.9
Chloride	mg/L	-	-	-	1.43	1.51	1.5
Fluoride	mg/L	-	1.5	-	0.045	0.048	0.048
Ammonia (N-NH ₃)	mg/L	7.2-12 ³	48-78 ³	-	<0.0050	<0.0050	0.0061
Nitrite (N-NO ₂)	mg/L	-	-	-	0.0075	0.0094	0.0066
Nitrate (N-NO ₃)	mg/L	3.7	339	-	0.146	0.164	0.158
Total Organic Carbon (TOC)	mg/L	-	-	-	3.36	2.8	2.95
Dissolved Organic Carbon (DOC)	mg/L	-	-	-	2.98	2.78	2.99
Total Metals							
Aluminum, total (T-Al)	mg/L	-	-	-	0.799	0.191	0.215
Antimony, total (T-Sb)	mg/L	-	0.27 ⁴	-	0.00039	0.00043	0.0004
Arsenic, total (T-As)	mg/L	0.0125	-	-	0.00074	0.0007	0.00063
Barium, total (T-Ba)	mg/L	-	-	-	0.00695	0.0016	0.00227
Beryllium, total (T-Be)	mg/L	0.1	-	-	<0.000020	<0.000020	<0.000020
Boron, total (T-B)	mg/L	1.2	-	-	<0.010	<0.010	<0.010
Cadmium, total (T-Cd)	mg/L	0.00012	-	-	0.0000121	<0.0000050	<0.0000100
Chromium, total (T-Cr)	mg/L	-	-	-	<0.00050	<0.00050	<0.00050
Cobalt, total (T-Co)	mg/L	-	-	-	0.00019	<0.00010	<0.00010
Copper, total (T-Cu)	mg/L	- ²	- ²	0.0043	0.00453	0.00145	0.00118
Iron, total (T-Fe)	mg/L	-	-	-	0.471	0.084	0.09
Lead, total (T-Pb)	mg/L	- ²	- ²	0.0035	0.000832	0.000248	0.000218
Manganese, total (T-Mn)	mg/L	0.1	-	-	0.0192	0.0107	0.00425
Molybdenum, total (T-Mo)	mg/L	-	-	-	0.00832	0.00823	0.00793
Nickel, total (T-Ni)	mg/L	0.0083	-	-	<0.00050	<0.00050	<0.00050
Selenium, total (T-Se)	mg/L	0.002	-	-	<0.000050	0.00006	0.000075
Silver, total (T-Ag)	mg/L	0.0005	0.0037	-	<0.000010	<0.000010	<0.000010
Thallium, total (T-Tl)	mg/L	-	-	-	0.000011	0.000012	<0.000010
Uranium, total (T-U)	mg/L	-	-	-	0.00185	0.0013	0.00148
Vanadium, total (T-V)	mg/L	- ²	-	0.0081	0.00146	0.00082	0.00075
Zinc, total (T-Zn)	mg/L	- ²	- ²	0.0133	0.0065	<0.0030	<0.0030
Hexavalent Chromium, total	mg/L	0.0015	-	-	<0.00050	<0.00050	<0.00050
Dissolved Metals							
Cadmium, dissolved (D-Cd)	mg/L	-	-	-	<0.0000100	<0.0000050	<0.0000050
Copper, dissolved (D-Cu)	mg/L	-	-	-	0.00131	0.00125	0.001
Iron, dissolved (D-Fe)	mg/L	-	-	-	0.019	0.019	0.013
Lead, dissolved (D-Pb)	mg/L	-	-	-	0.00008	0.000075	0.00005
Manganese, dissolved (D-Mn)	mg/L	-	-	-	0.00447	0.00855	0.00178
Nickel, dissolved (D-Ni)	mg/L	-	-	-	<0.00050	<0.00050	<0.00050
Strontium, dissolved (D-Sr)	mg/L	-	-	-	0.0364	0.0349	0.035
Vanadium, dissolved (D-V)	mg/L	-	-	-	0.00059	0.00059	0.00053
Zinc, dissolved (D-Zn)	mg/L	-	-	-	0.002	0.0017	<0.0010
Polycyclic Aromatic Hydrocarbons (PAHs)							
Acenaphthene	mg/L	0.006	-	-	-	-	-
Acridine	mg/L	-	-	-	-	-	-
Anthracene	mg/L	-	-	-	-	-	-
Benz(a)anthracene	mg/L	-	-	-	-	-	-
Benzo(a)pyrene	mg/L	0.00001	-	-	-	-	-
Chrysene	mg/L	0.0001	-	-	-	-	-
Fluoranthene	mg/L	-	-	-	-	-	-
Fluorene	mg/L	0.012	-	-	-	-	-
1-methylnaphthalene	mg/L	0.001	-	-	-	-	-
2-methylnaphthalene	mg/L	0.001	-	-	-	-	-
Naphthalene	mg/L	0.001	-	-	-	-	-
Phenanthrene	mg/L	-	-	-	-	-	-
Pyrene	mg/L	-	-	-	-	-	-
Quinoline	mg/L	-	-	-	-	-	-
Volatile Organic Compounds (VOCs)							
Benzene	mg/L	0.59	6.0	-	-	-	-
Ethylbenzene	mg/L	0.07	1.0	-	-	-	-
Methyl-tert-butyl-ether	mg/L	5	0.44	-	-	-	-
Styrene	mg/L	-	-	-	-	-	-
Toluene	mg/L	0.03	3.0	-	-	-	-
Total Xylenes	mg/L	0.07	1.0	-	-	-	-
Chlorobenzene	mg/L	0.025	-	-	-	-	-
1,2-Dichlorobenzene	mg/L	0.042	-	-	-	-	-

Notes:

West catchment influents were not discharged to Howe Sound. Influent results above screening values are only highlighted for comparative purposes.

Non-detect results are screened using the detection limit value.

Results **underlined in bold italics** exceed the applicable long-term water quality guideline for the protection of marine water aquatic life.

Shaded results exceed the applicable short-term water quality guideline for the protection of marine water aquatic life.

Results in **orange text** exceed the PE-111578 West Sedimentation Pond Discharge Limit.

The West Catchment intermittently discharged each day during the monitoring period (March 29 – April 4) except on March 31 and April 4.

¹ The lowest applicable guidelines from approved or working BC WQGs, Canadian (CCME) WQGs and Federal WQGs for marine waters.

² The WQG was not evaluated for parameters with discharge limits.

³ The BC WQG for total ammonia is salinity, pH and temperature dependent; see Tables 27E and 27F in BC WQG guidance document.

⁴ The working BC WQG for trivalent antimony [SB(III)] is 0.27 mg/L and is applied to total antimony results.

⁵ The PE-111578 discharge limit for TSS is 25 mg/L under dry conditions and 75 mg/L for each day of Wet Conditions and for one day following the end of Wet Conditions.

**Table C-2:
West Sedimentation Pond Influent and Effluent Analytical Results Received at the Time of Reporting.**

Parameter	Unit	Lowest Applicable Guideline ¹		PE-111578 Discharge Limit	Station SP-W-IN	Station SP-W-OUT	Station SP-W-OUT
					Influent	Effluent	Effluent
					SP-W-IN	SP-W-OUT-Port	SP-W-OUT-Outfall
					VA26A7527-001	VA26A7527-006	VA26A7527-007
					2026-03-30 9:36	2026-03-30 14:08	2026-03-30 11:32
General Parameters							
pH - Field	pH units	- ²	-	5.5 - 9.0	6.58	7.40	7.67
Specific Conductivity - Field	µS/cm	-	-	-	155	172	159
Temperature - Field	°C	-	-	-	8.0	11.9	9.9
Salinity - Field	ppt	-	-	-	0.07	0.08	0.08
Turbidity - Field	NTU	-	-	-	9.13	3.03	3.42
TSS	mg/L	-	-	25 or 75 ⁵	7.5	3.3	<3.0
Dissolved Oxygen - Field	mg/L	≥8	-	-	12.02	11.08	12.12
Total Hardness	mg/L	-	-	-	33.3	32.2	32.3
Dissolved Hardness	mg/L	-	-	-	32.7	32.1	32.2
Anions and Nutrients							
Sulphate	mg/L	-	-	-	28.9	29.1	29.2
Chloride	mg/L	-	-	-	1.47	1.46	1.73
Fluoride	mg/L	-	1.5	-	0.046	0.047	0.047
Ammonia (N-NH ₃)	mg/L	7.2-29 ³	48-191 ³	-	0.0116	0.0066	0.0053
Nitrite (N-NO ₂)	mg/L	-	-	-	0.0078	0.007	0.0077
Nitrate (N-NO ₃)	mg/L	3.7	339	-	0.157	0.157	0.157
Total Organic Carbon (TOC)	mg/L	-	-	-	2.84	2.76	2.91
Dissolved Organic Carbon (DOC)	mg/L	-	-	-	2.9	2.82	2.91
Total Metals							
Aluminum, total (T-Al)	mg/L	-	-	-	0.59	0.221	0.227
Antimony, total (T-Sb)	mg/L	-	0.27 ⁴	-	0.00039	0.00039	0.00038
Arsenic, total (T-As)	mg/L	0.0125	-	-	0.00071	0.00063	0.00064
Barium, total (T-Ba)	mg/L	-	-	-	0.00488	0.00234	0.00202
Beryllium, total (T-Be)	mg/L	0.1	-	-	<0.000020	<0.000020	<0.000020
Boron, total (T-B)	mg/L	1.2	-	-	<0.010	<0.010	<0.010
Cadmium, total (T-Cd)	mg/L	0.00012	-	-	0.000009	<0.0000050	<0.0000100
Chromium, total (T-Cr)	mg/L	-	-	-	<0.00050	<0.00050	<0.00050
Cobalt, total (T-Co)	mg/L	-	-	-	0.00016	<0.00010	<0.00010
Copper, total (T-Cu)	mg/L	- ²	- ²	0.0043	0.00134	0.00111	0.00104
Iron, total (T-Fe)	mg/L	-	-	-	0.325	0.095	0.10
Lead, total (T-Pb)	mg/L	- ²	- ²	0.0035	0.000579	0.000227	0.000226
Manganese, total (T-Mn)	mg/L	0.1	-	-	0.0159	0.00443	0.00781
Molybdenum, total (T-Mo)	mg/L	-	-	-	0.00789	0.00782	0.00783
Nickel, total (T-Ni)	mg/L	0.0083	-	-	<0.00050	<0.00050	<0.00050
Selenium, total (T-Se)	mg/L	0.002	-	-	0.000066	<0.000050	0.000075
Silver, total (T-Ag)	mg/L	0.0005	0.0037	-	<0.000010	<0.000010	<0.000010
Thallium, total (T-Tl)	mg/L	-	-	-	<0.000010	<0.000010	<0.000010
Uranium, total (T-U)	mg/L	-	-	-	0.00158	0.00149	0.00142
Vanadium, total (T-V)	mg/L	- ²	-	0.0081	0.00114	0.00077	0.00081
Zinc, total (T-Zn)	mg/L	- ²	- ²	0.0133	0.0031	<0.0030	0.0036
Hexavalent Chromium, total	mg/L	0.0015	-	-	<0.00050	<0.00050	<0.00050
Dissolved Metals							
Cadmium, dissolved (D-Cd)	mg/L	-	-	-	<0.0000050	<0.0000050	<0.0000050
Copper, dissolved (D-Cu)	mg/L	-	-	-	0.00086	0.00091	0.00082
Iron, dissolved (D-Fe)	mg/L	-	-	-	0.015	0.018	0.013
Lead, dissolved (D-Pb)	mg/L	-	-	-	<0.000050	<0.000050	<0.000050
Manganese, dissolved (D-Mn)	mg/L	-	-	-	0.00601	0.00572	0.00395
Nickel, dissolved (D-Ni)	mg/L	-	-	-	<0.00050	<0.00050	<0.00050
Strontium, dissolved (D-Sr)	mg/L	-	-	-	0.0354	0.0353	0.0345
Vanadium, dissolved (D-V)	mg/L	-	-	-	0.00054	0.00055	0.00054
Zinc, dissolved (D-Zn)	mg/L	-	-	-	<0.0010	<0.0010	0.0015
Polycyclic Aromatic Hydrocarbons (PAHs)							
Acenaphthene	mg/L	0.006	-	-	-	-	-
Acridine	mg/L	-	-	-	-	-	-
Anthracene	mg/L	-	-	-	-	-	-
Benz(a)anthracene	mg/L	-	-	-	-	-	-
Benzo(a)pyrene	mg/L	0.00001	-	-	-	-	-
Chrysene	mg/L	0.0001	-	-	-	-	-
Fluoranthene	mg/L	-	-	-	-	-	-
Fluorene	mg/L	0.012	-	-	-	-	-
1-methylnaphthalene	mg/L	0.001	-	-	-	-	-
2-methylnaphthalene	mg/L	0.001	-	-	-	-	-
Naphthalene	mg/L	0.001	-	-	-	-	-
Phenanthrene	mg/L	-	-	-	-	-	-
Pyrene	mg/L	-	-	-	-	-	-
Quinoline	mg/L	-	-	-	-	-	-
Volatile Organic Compounds (VOCs)							
Benzene	mg/L	0.59	6.0	-	-	-	-
Ethylbenzene	mg/L	0.07	1.0	-	-	-	-
Methyl-tert-butyl-ether	mg/L	5	0.44	-	-	-	-
Styrene	mg/L	-	-	-	-	-	-
Toluene	mg/L	0.03	3.0	-	-	-	-
Total Xylenes	mg/L	0.07	1.0	-	-	-	-
Chlorobenzene	mg/L	0.025	-	-	-	-	-
1,2-Dichlorobenzene	mg/L	0.042	-	-	-	-	-

Notes:

West catchment influents were not discharged to Howe Sound. Influent results above screening values are only highlighted for comparative purposes.

Non-detect results are screened using the detection limit value.

Results **underlined in bold italics** exceed the applicable long-term water quality guideline for the protection of marine water aquatic life.

Shaded results exceed the applicable short-term water quality guideline for the protection of marine water aquatic life.

Results in **orange text** exceed the PE-111578 West Sedimentation Pond Discharge Limit.

The West Catchment intermittently discharged each day during the monitoring period (March 29 – April 4) except on March 31 and April 4.

¹ The lowest applicable guidelines from approved or working BC WQGs, Canadian (CCME) WQGs and Federal WQGs for marine waters.

² The WQG was not evaluated for parameters with discharge limits.

³ The BC WQG for total ammonia is salinity, pH and temperature dependent; see Tables 27E and 27F in BC WQG guidance document.

⁴ The working BC WQG for trivalent antimony [SB(III)] is 0.27 mg/L and is applied to total antimony results.

⁵ The PE-111578 discharge limit for TSS is 25 mg/L under dry conditions and 75 mg/L for each day of Wet Conditions and for one day following the end of Wet Conditions.

**Table C-3:
West Catchment Methylmercury and Corresponding Total Mercury Results Received at the Time of Reporting.**

Parameter					Total Methylmercury	Total Mercury
Unit					µg/L	µg/L
Lowest Applicable Guideline ¹					0.0001 ²	0.0071-0.015 ^{3,4}
Station	Water Type	Sample ID	Lab ID	Sampling Date		
Influent						
SP-W-IN	Influent	SP-W-IN	VA26A7527-001	2026-03-30	0.000059	0.00341
2700GPM-IN	Influent	W2700-IN	VA26A7527-002	2026-03-30	0.000047	0.00395
Effluent						
SP-W-OUT	Effluent	SP-W-OUT-Port	VA26A7527-006	2026-03-30	0.000027	0.00219
SP-W-OUT	Effluent	SP-W-OUT-Outfall	VA26A7527-007	2026-03-30	0.000028	0.00205
W2700T3-OUT	Effluent	W2700T3-OUT	VA26A7527-003	2026-03-30	0.000024	0.00252
W2700T4-OUT	Effluent	W2700T4-OUT	VA26A7527-004	2026-03-30	0.000042	0.00235

Notes:

West catchment influents were not discharged to Howe Sound. Results above screening values are only highlighted for comparative purposes. Non-detect results are screened using the detection limit value.

Results ***underlined in bold italics*** exceed the applicable long-term water quality guideline for the protection of marine aquatic life.

¹ The lowest applicable guidelines from approved or working BC WQGs, Canadian (CCME) WQGs and Federal WQGs.

² From BC Ambient Water Quality Guidelines for Mercury Overview Report. The methylmercury concentration threshold of 0.0001 µg/L (0.1 ng/L) is indicated as a WQG for the protection of wildlife and is set at a concentration that protects fish from mercury bioaccumulation to a level that may harm wildlife that consume fish.

³ CCME guideline for total mercury = 0.016 µg/L.

⁴ When MeHg ≤ 0.5% of total Hg, BC WQG = 0.02 µg/L. When MeHg > 0.5% of total Hg, BC WQG = 0.0001/(MeHg/Total Hg). Detection limit values are used to calculate the WQG for result reported as not detected.

**Table C-4:
West Catchment Field Measurements Collected During the Monitoring Period (March 29 – April 4).**

Parameter			Temperature	Dissolved Oxygen (DO)	Salinity	Turbidity	Estimated TSS ³	pH	Specific Conductivity	Visibility of Sheen
Unit			°C	mg/L	ppt	NTU	mg/L	s.u.	µS/cm	
PE-111578 Discharge Limit			-	-	-	-	25 or 75 ⁶	5.5 - 9.0	-	-
Lowest Applicable Guideline ¹			-	≥8	-	-	- ²	- ²	-	-
Station ID	Water Type	Date								
Influent ⁴										
SP-W-IN	Influent	2026-03-29 9:51	8.2	11.64	0.13	13.75	13.3	8.48	267	No
SP-W-IN	Influent	2026-03-30 9:36	8.0	12.02	0.07	9.13	9.8	6.58	155	No
SP-W-IN	Influent	2026-03-31 9:53	8.3	12.26	0.07	2.99	5.2	7.73	145	No
SP-W-IN	Influent	2026-04-01 9:42	8.9	11.50	0.07	138.59	106.4	7.88	142	No
SP-W-IN	Influent	2026-04-02 9:09	8.6	11.90	0.06	57.99	46.2	7.72	131	No
SP-W-IN	Influent	2026-04-03 13:40	9.6	11.55	0.05	45.14	36.7	7.64	116	No
SP-W-IN	Influent	2026-04-04 11:08	11.0	11.93	0.05	201.25	153.1	7.60	100	No
2700GPM-IN	Influent	2026-03-29 14:23	8.9	11.53	0.08	5.53	7.1	7.89	167	No
2700GPM-IN	Influent	2026-03-30 9:57	7.5	12.14	0.07	13.32	12.9	7.50	152	No
2700GPM-IN	Influent	2026-03-31 9:44	8.2	12.11	0.07	5.83	7.3	7.75	145	No
2700GPM-IN	Influent	2026-04-01 9:37	9.6	11.68	0.07	27.93	23.8	7.73	142	No
2700GPM-IN	Influent	2026-04-02 9:05	8.7	11.74	0.07	133.03	102.2	7.67	138	No
2700GPM-IN	Influent	2026-04-03 13:57	10.2	11.66	0.06	20.00	17.9	7.66	128	No
Effluent ⁵										
SP-W-OUT	Effluent	2026-03-29 14:27	8.2	11.92	0.09	2.91	5.2	7.87	185	No
SP-W-OUT	Effluent	2026-03-30 11:32	9.9	12.12	0.08	3.42	5.6	7.67	159	No
SP-W-OUT	Effluent	2026-03-30 11:33	10.4	12.13	0.08	3.3	5.5	7.67	158	No
SP-W-OUT	Effluent	2026-03-30 14:08	11.9	11.08	0.08	3.03	5.3	7.40	172	No
SP-W-OUT	Effluent	2026-04-01 9:22	9.6	11.39	0.07	3.59	5.7	7.58	146	No
SP-W-OUT	Effluent	2026-04-02 11:39	9.6	12.04	0.08	5.42	7.0	8.39	159	No
SP-W-OUT	Effluent	2026-04-03 14:23	10.0	11.71	0.06	2.79	5.1	7.92	126	No

Notes:

West catchment influents for March 29 – April 4 were not discharged to Howe Sound. Results above screening values are only highlighted for comparative purposes.

Results ***underlined in bold italics*** exceed the applicable long-term water quality guideline for the protection of marine water aquatic life.

Shaded results exceed the applicable short-term water quality guideline for the protection of marine water aquatic life.

Results in **orange text** exceed the PE-111578 West Sedimentation Pond Discharge Limit.

¹ The lowest applicable guidelines from approved or working BC WQGs, Canadian (CCME) WQGs and Federal WQGs.

² The WQG was not evaluated for parameters with discharge limits.

³ TSS concentration is estimated from field turbidity measurements using a site-specific relationship TSS = 0.7458 * [turbidity as NTU] + 3.

⁴ Daily field measurements for station SP-W-IN were collected from cell 1 of the West Sedimentation Pond.

⁵ As described in Section 1.1, when there is surplus water, West Sedimentation Pond clarified effluent from the individual 2700GPM trains is directed to SP-W-OUT for discharge. 2700GPM clarified effluent from trains 1, 3 and 4 was intermittently discharged to Howe Sound at the authorized discharge location (SP-W-OUT) each day during the monitoring period (March 29 – April 4) except on March 31 and April 4. Daily field parameters were not collected from station SP-W-OUT on March 31 and April 4 as there was no discharge to Howe Sound on those days.

⁶ The PE-111578 discharge limit for TSS is 25 mg/L under dry conditions and 75 mg/L for each day of Wet Conditions and for one day following the end of Wet Conditions.

**Table C-5:
West Catchment Daily Discharge Volumes for the Monitoring Period (March 29 – April 4).**

	West Sedimentation Pond Effluent	West TSS Settling System (2700GPM) Clarified Effluent (Station 2700GPM-OUT) ³	Water Reclaimed for Construction Purposes (Station 2700GPM-OUT)	West WWTP Treated Effluent ¹ (Station WWTP-W-OUT)	Discharge to Howe Sound (Station SP-W-OUT)
Unit	m ³	m ³	m ³	m ³	m ³
PE-111578 Discharge Limit	-	-	-	120	- ²
Date					
2026-03-29	0	439	0	0	261
2026-03-30	0	1,968	0	0	318
2026-03-31	0	1,660	0	0	0
2026-04-01	0	449	0	0	117
2026-04-02	0	1,443	0	0	304
2026-04-03	0	214	0	0	97
2026-04-04	0	0	0	0	0

Notes:

Results in orange text exceed the PE-111578 West Sedimentation Pond Discharge Limit.

¹ The West WWTP is not being operated therefore discharges are not expected from this facility.

² As noted in PE-111578 Condition 2.2.4, the annual average authorized discharge rate from the West Sedimentation Pond to Howe Sound was set to 310 m³/day for the purpose of calculating discharge fees as required by the Permit and Approval Fees and Charges Regulation. Therefore, the annual average authorized discharge rate is not evaluated as a discharge limit.

³ Clarified effluent from the 2700GPM TSS settling system is recirculated to the West Sedimentation Pond, discharged to Howe Sound or reclaimed for construction purposes based on operational considerations. Daily discharge volumes from station 2700GPM-OUT are a sum of all active treatment trains.

***Appendix D:
Non-Contact Water Diversion Ditch Outlets
Monitoring Results***

**Table D-1:
Summary of Non-Contact Water Diversion Ditch Outlet Quality Results Received at the Time of Reporting.**

Parameter	Unit	Lowest Applicable Guideline ^{1,2}		Station OUT-02 Non-contact Water Diversion Ditch Outlet OUT-02 VA26A6973-001 2026-03-24 15:19
		Long Term	Short Term	
General Parameters				
pH - Field	pH units	6.5 - 9.0	-	6.55
Specific Conductivity - Field	µS/cm	-	-	11
Temperature - Field	°C	-	-	5.8
Salinity - Field	ppt	-	-	0
Turbidity - Field	NTU	-	-	0.05
TSS	mg/L	-	-	<3.0
Dissolved Oxygen - Field	mg/L	>=8	>=5	12.34
Total Hardness	mg/L	-	-	3.84
Dissolved Hardness	mg/L	-	-	3.52
Anions and Nutrients				
Sulphate ²	mg/L	128	-	1.41
Chloride	mg/L	120	600	<0.50
Fluoride ²	mg/L	-	0.400	<0.020
Ammonia (N-NH ₃) ²	mg/L	1.94	26.8	<0.0050
Nitrite (N-NO ₂) ²	mg/L	0.0200	0.1	<0.0010
Nitrate (N-NO ₃)	mg/L	3	32.8	0.0367
Total Organic Carbon (TOC)	mg/L	-	-	3.15
Total Inorganic Carbon (DOC)	mg/L	-	-	3.29
Total Metals				
Aluminum, total (T-Al) ²	mg/L	0.0424	-	<u>0.142</u>
Antimony, total (T-Sb)	mg/L	0.074	-	<0.00010
Arsenic, total (T-As)	mg/L	0.005	-	<0.00010
Barium, total (T-Ba)	mg/L	1	-	0.00282
Beryllium, total (T-Be)	mg/L	0.00013	-	<0.000020
Boron, total (T-B)	mg/L	1.2	29	<0.010
Cadmium, total (T-Cd) ²	mg/L	0.0000364	0.000106	<0.0000050
Chromium, total (T-Cr) ³	mg/L	0.001	-	<0.00050
Cobalt, total (T-Co) ²	mg/L	0.000389	-	<0.00010
Copper, total (T-Cu)	mg/L	-	-	0.00073
Iron, total (T-Fe)	mg/L	0.3	1	0.028
Lead, total (T-Pb)	mg/L	-	-	0.000057
Manganese, total (T-Mn) ²	mg/L	-	-	0.00134
Molybdenum, total (T-Mo)	mg/L	0.073	46	0.000373
Nickel, total (T-Ni) ²	mg/L	0.0250	-	<0.00050
Selenium, total (T-Se)	mg/L	0.001	-	<0.000050
Silver, total (T-Ag)	mg/L	0.00012	-	<0.000010
Thallium, total (T-Tl)	mg/L	0.0008	-	<0.000010
Uranium, total (T-U)	mg/L	0.0085	0.033	0.000054
Vanadium, total (T-V)	mg/L	0.12	-	<0.00050
Zinc, total (T-Zn)	mg/L	-	-	<0.0030
Hexavalent Chromium, total	mg/L	0.001	-	-
Dissolved Metals				
Cadmium, dissolved (D-Cd) ²	mg/L	0.0000192	0.0000380	<0.0000050
Copper, dissolved (D-Cu) ²	mg/L	0.000200	0.000200	<u>0.00049</u>
Iron, dissolved (D-Fe)	mg/L	-	0.35	0.015
Lead, dissolved (D-Pb) ²	mg/L	0.00198	-	<0.000050
Manganese, dissolved (D-Mn) ²	mg/L	0.165-0.330	1.97	0.00054
Nickel, dissolved (D-Ni) ²	mg/L	0.000800	0.0127	<0.00050
Strontium, dissolved (D-Sr)	mg/L	2.5	-	0.00571
Vanadium, dissolved (D-V)	mg/L	-	-	<0.00050
Zinc, dissolved (D-Zn) ²	mg/L	0.00779	0.0100	0.0016
Polycyclic Aromatic Hydrocarbons (PAHs)				
Acenaphthene	mg/L	0.0058	-	-
Acridine	mg/L	0.003	-	-
Anthracene	mg/L	0.000012	-	-
Benz(a)anthracene	mg/L	0.000018	-	-
Benzo(a)pyrene	mg/L	0.000001	-	-
Chrysene	mg/L	-	-	-
Fluoranthene	mg/L	0.000004	-	-
Fluorene	mg/L	0.003	-	-
1-methylnaphthalene	mg/L	-	-	-
2-methylnaphthalene	mg/L	-	-	-
Naphthalene	mg/L	0.001	0.001	-
Phenanthrene	mg/L	0.0003	-	-
Pyrene	mg/L	0.000002	-	-
Quinoline	mg/L	0.0034	-	-
Volatile Organic Compounds (VOCs)				
Benzene	mg/L	0.04	-	-
Ethylbenzene	mg/L	0.09	-	-
Methyl-tert-butyl-ether	mg/L	10	3.4	-
Styrene	mg/L	0.072	-	-
Toluene	mg/L	0.0005	-	-
Total Xylenes	mg/L	0.03	-	-
Chlorobenzene	mg/L	0.0013	-	-
1,2-Dichlorobenzene	mg/L	0.0007	-	-

Notes:

Non-detect results are screened using the detection limit value.

Results ***underlined in bold italics*** exceed the applicable long-term water quality guideline for the protection of freshwater aquatic life.

Shaded results exceed the applicable short-term water quality guideline for the protection of freshwater aquatic life.

¹ The lowest applicable guidelines from approved or working BC WQGs, Canadian (CCME) WQGs and Federal WQGs.² BC WQG or CWQG indicated to be variable are calculated from sample-specific measurements for temperature, field pH, total hardness and dissolved organic carbon (DOC) content.³ The approved BC WQG for hexavalent chromium [Cr(VI)] is 0.001 mg/L and 0.0089 mg/L for trivalent chromium [Cr(III)]. The more conservative criteria for Cr(VI) is applied to total chromium results. The lowest applicable guidelines are shown in the table; however, water quality data was screened to all applicable guidelines.

***Appendix E:
Marine Water Receiving Environment Monitoring
Results***

**Table E-1:
Summary of Marine Water Quality Results Received at the Time of Reporting.**

Parameter	Unit	Lowest Applicable Guideline ¹		Station IDZ-E1	Station IDZ-E1	Station IDZ-E1	Station IDZ-E2	Station IDZ-E2	Station IDZ-E2
				0.5 m Below Surface	2 m Below Surface	2 m Above Seafloor	0.5 m Below Surface	2 m Below Surface	2 m Above Seafloor
				IDZ-E1-0.5	IDZ-E1-2m	IDZ-E1-SF	IDZ-E2-0.5	IDZ-E2-2m	IDZ-E2-SF
				VA26A6836-001	VA26A6836-002	VA26A6836-003	VA26A6836-004	VA26A6836-005	VA26A6836-006
		Long Term	Short Term	2026-03-22 11:47	2026-03-22 11:49	2026-03-22 11:53	2026-03-22 12:23	2026-03-22 12:24	2026-03-22 12:30
General Parameters									
pH - Field	pH units	7.0 - 8.7	-	7.38	7.32	7.52	7.69	7.52	7.49
Specific Conductivity - Field	µS/cm	-	-	5015	7343	45055	4351	4413	45926
Temperature - Field	°C	-	-	5.8	5.8	8.8	5.8	5.8	9.0
Salinity - Field	ppt	Narrative ²	-	2.69	4.03	28.91	2.31	2.35	29.54
Turbidity - Field	NTU	Narrative ²	Narrative ²	8.67	8.82	0.26	9.09	8.45	0.25
TSS	mg/L	Narrative ²	Narrative ²	10.1	10.1	3.8	9.1	9.1	29.7
Dissolved Oxygen - Field	mg/L	>=8	-	12.23	12.2	7.07	12.1	12.26	6.41
Total Hardness	mg/L	-	-	537	661	6310	454	498	2370
Dissolved Hardness	mg/L	-	-	505	596	4580	405	433	4500
Anions and Nutrients									
Sulphate	mg/L	-	-	148	362	2140	128	139	1060
Chloride	mg/L	-	-	1480	3050	15600	1240	1320	8230
Fluoride	mg/L	-	1.5	<1.0	<1.0	<1.0	<1.0	<1.0	<1.0
Ammonia (N-NH ₃)	mg/L	7.2-20 ³	48-135 ³	0.0109	0.012	0.0261	0.009	0.0087	0.012
Nitrite (N-NO ₂)	mg/L	-	-	<0.10	<0.10	<0.10	<0.10	<0.10	<0.10
Nitrate (N-NO ₃)	mg/L	3.7	339	<0.50	<0.50	<0.50	<0.50	<0.50	<0.50
Total Organic Carbon (TOC)	mg/L	-	-	2.85	2.72	1.29	2.57	2.71	2.41
Dissolved Organic Carbon (DOC)	mg/L	-	-	2.34	2.39	1.41	2.35	2.22	1.19
Total Metals									
Aluminum, total (T-Al)	mg/L	-	-	0.547	0.502	0.0428	0.518	0.508	0.365
Antimony, total (T-Sb)	mg/L	-	0.27 ⁴	<0.0010	<0.0010	<0.0010	<0.0010	<0.0010	<0.0010
Arsenic, total (T-As)	mg/L	0.0125	0.0125	<0.00040	<0.00040	0.00138	<0.00040	<0.00040	0.00079
Barium, total (T-Ba)	mg/L	-	-	0.0121	0.0119	0.0106	0.0117	0.0117	0.0123
Beryllium, total (T-Be)	mg/L	0.1	-	<0.00050	<0.00050	<0.00050	<0.00050	<0.00050	<0.00050
Boron, total (T-B)	mg/L	1.2	-	0.44	0.48	3.95	0.41	0.39	1.70
Cadmium, total (T-Cd)	mg/L	0.00012	-	<0.000020	<0.000020	0.00007	<0.000020	<0.000020	0.000044
Chromium, total (T-Cr)	mg/L	-	-	<0.00050	<0.00050	<0.00050	<0.00050	<0.00050	<0.00050
Cobalt, total (T-Co)	mg/L	-	-	0.000212	0.000203	0.000072	0.000202	0.000209	0.000251
Copper, total (T-Cu)	mg/L	0.002	0.003	0.00175	0.00169	0.00055	0.00167	0.00157	0.00154
Iron, total (T-Fe)	mg/L	-	-	0.369	0.353	0.041	0.348	0.349	0.425
Lead, total (T-Pb)	mg/L	0.002	0.14	0.00014	0.00011	<0.00010	0.00011	0.00012	0.00019
Manganese, total (T-Mn)	mg/L	0.1	-	0.0144	0.0139	0.00262	0.0142	0.0142	0.0142
Molybdenum, total (T-Mo)	mg/L	-	-	0.00114	0.00133	0.00775	0.00088	0.00091	0.00437
Nickel, total (T-Ni)	mg/L	0.0083	-	<0.00050	<0.00050	<0.00050	<0.00050	<0.00050	<0.00050
Selenium, total (T-Se)	mg/L	0.002	-	<0.00050	<0.00050	<0.00050	<0.00050	<0.00050	<0.00050
Silver, total (T-Ag)	mg/L	0.0005	0.0037	<0.00010	<0.00010	<0.00010	<0.00010	<0.00010	<0.00010
Thallium, total (T-Tl)	mg/L	-	-	<0.000050	<0.000050	<0.000050	<0.000050	<0.000050	<0.000050
Uranium, total (T-U)	mg/L	-	-	0.000269	0.000289	0.00198	0.000188	0.000236	0.00117
Vanadium, total (T-V)	mg/L	0.005	-	0.00132	0.00135	0.00132	0.00122	0.00129	0.00181
Zinc, total (T-Zn)	mg/L	0.01	0.055	<0.0030	<0.0030	<0.0030	<0.0030	<0.0030	<0.0030
Hexavalent Chromium, total	mg/L	0.0015	-	<0.00150	<0.00150	<0.00150	<0.00150	<0.00150	<0.00150
Dissolved Metals									
Cadmium, dissolved (D-Cd)	mg/L	-	-	<0.000020	<0.000020	0.000056	<0.000020	<0.000020	0.000069
Copper, dissolved (D-Cu)	mg/L	-	-	0.00076	0.00079	<0.00050	0.00075	0.00083	<0.00050
Iron, dissolved (D-Fe)	mg/L	-	-	0.028	0.03	<0.010	0.033	0.037	<0.010
Lead, dissolved (D-Pb)	mg/L	-	-	<0.00010	<0.00010	<0.00010	<0.00010	<0.00010	<0.00010
Manganese, dissolved (D-Mn)	mg/L	-	-	0.00647	0.0065	0.00176	0.00711	0.007	0.00133
Nickel, dissolved (D-Ni)	mg/L	-	-	<0.00050	<0.00050	<0.00050	<0.00050	<0.00050	<0.00050
Strontium, dissolved (D-Sr)	mg/L	-	-	0.527	0.643	4.54	0.429	0.463	5.44
Vanadium, dissolved (D-V)	mg/L	-	-	<0.00050	0.0005	0.001	<0.00050	<0.00050	0.00119
Zinc, dissolved (D-Zn)	mg/L	-	-	<0.0010	<0.0010	<0.0010	<0.0010	<0.0010	<0.0010
Polycyclic Aromatic Hydrocarbons (PAHs)									
Acenaphthene	mg/L	0.006	-	<0.000010	<0.000010	<0.000010	<0.000010	<0.000010	<0.000010
Acridine	mg/L	-	-	<0.000010	<0.000010	<0.000010	<0.000010	<0.000010	<0.000010
Anthracene	mg/L	-	-	<0.000010	<0.000010	<0.000010	<0.000010	<0.000010	<0.000010
Benz(a)anthracene	mg/L	-	-	<0.000010	<0.000010	<0.000010	<0.000010	<0.000010	<0.000010
Benzo(a)pyrene	mg/L	0.00001	-	<0.0000050	<0.0000050	<0.0000050	<0.0000050	<0.0000050	<0.0000050
Chrysene	mg/L	0.0001	-	<0.000010	<0.000010	<0.000010	<0.000010	<0.000010	<0.000010
Fluoranthene	mg/L	-	-	<0.000010	<0.000010	<0.000010	<0.000010	<0.000010	<0.000010
Fluorene	mg/L	0.012	-	<0.000010	<0.000010	<0.000010	<0.000010	<0.000010	<0.000010
1-methylnaphthalene	mg/L	0.001	-	<0.000010	<0.000010	<0.000010	<0.000010	<0.000010	<0.000010
2-methylnaphthalene	mg/L	0.001	-	0.000015	<0.000010	<0.000010	0.000018	<0.000010	<0.000010
Naphthalene	mg/L	0.001	-	<0.000050	<0.000050	<0.000050	<0.000050	<0.000050	<0.000050
Phenanthrene	mg/L	-	-	<0.000020	<0.000020	<0.000020	<0.000020	<0.000020	<0.000020
Pyrene	mg/L	-	-	<0.000010	<0.000010	<0.000010	<0.000010	<0.000010	<0.000010
Quinoline	mg/L	-	-	<0.000050	<0.000050	<0.000050	<0.000050	<0.000050	<0.000050
Volatile Organic Compounds (VOCs)									
Benzene	mg/L	0.11	-	<0.00050	<0.00050	<0.00050	<0.00050	<0.00050	<0.00050
Ethylbenzene	mg/L	0.25	-	<0.00050	<0.00050	<0.00050	<0.00050	<0.00050	<0.00050
Methyl-tert-butyl-ether	mg/L	5	0.44	<0.00050	<0.00050	<0.00050	<0.00050	<0.00050	<0.00050
Styrene	mg/L	-	-	<0.00050	<0.00050	<0.00050	<0.00050	<0.00050	<0.00050
Toluene	mg/L	0.215	-	<0.00040	<0.00040	<0.00040	<0.00040	<0.00040	<0.00040
Total Xylenes	mg/L	-	-	<0.00050	<0.00050	<0.00050	<0.00050	<0.00050	<0.00050
Chlorobenzene	mg/L	0.025	-	<0.00050	<0.00050	<0.00050	<0.00050	<0.00050	<0.00050
1,2-Dichlorobenzene	mg/L	0.042	-	<0.00050	<0.00050	<0.00050	<0.00050	<0.00050	<0.00050

Notes:

Results **underlined in bold italics** exceed the applicable long-term water quality guideline for the protection of marine water aquatic life.

Shaded results exceed the applicable short-term water quality guideline for the protection of marine water aquatic life.

¹ The lowest applicable guidelines from approved or working BC WQGs, Canadian (CCME) WQGs and Federal WQGs.

² Induced guidelines for change from background conditions arising from discharges to the aquatic environment. Salinity WQG was not evaluated. The water quality data presented in the table were collected when the site was discharging intermittently for <24 hours, therefore the turbidity and TSS short-term WQGs were evaluated. Background conditions at each depth (0.5 and 2 m below surface and 2 m above the seafloor) were established from reference station WQR1 collected March 22 (Table E-3).

³ The approved total ammonia nitrogen BC WQG is salinity, pH and temperature dependent; see Tables 26E and 26F in BC WQG guidance document.

⁴ The working BC WQG for trivalent antimony [SB(III)] is 0.27 mg/L and is applied to total antimony results.

**Table E-2:
Summary of Marine Water Quality Results Received at the Time of Reporting.**

Parameter	Unit	Lowest Applicable Guideline ¹		Station IDZ-W1	Station IDZ-W1	Station IDZ-W1	Station IDZ-W2	Station IDZ-W2	Station IDZ-W2
				0.5 m Below Surface	2 m Below Surface	2 m Above Seafloor	0.5 m Below Surface	2 m Below Surface	2 m Above Seafloor
				IDZ-W1-0.5	IDZ-W1-2m	IDZ-W1-SF	IDZ-W2-0.5	IDZ-W2-2m	IDZ-W2-SF
				VA26A6844-004	VA26A6844-005	VA26A6844-006	VA26A6844-007	VA26A6844-008	VA26A6844-009
		Long Term	Short Term	2026-03-23 10:53	2026-03-23 10:52	2026-03-23 10:45	2026-03-23 9:57	2026-03-23 9:58	2026-03-23 10:06
General Parameters									
pH - Field	pH units	7.0 - 8.7	-	7.86	8.19	7.4	7.78	7.4	7.39
Specific Conductivity - Field	µS/cm	-	-	1654	1650	45904	1766	3887	45862
Temperature - Field	°C	-	-	4.9	4.8	9	4.7	4.9	9.0
Salinity - Field	ppt	Narrative ²	-	0.83	0.83	29.53	0.89	2.05	29.5
Turbidity - Field	NTU	Narrative ²	Narrative ²	6.28	6.26	0.11	6.38	6.55	0.39
TSS	mg/L	Narrative ²	Narrative ²	5.5	5.6	<2.0	5.3	5.8	<2.0
Dissolved Oxygen - Field	mg/L	>=8	-	12.52	12.41	7.88	12.51	12.52	6.33
Total Hardness	mg/L	-	-	162	780	6250	175	226	6210
Dissolved Hardness	mg/L	-	-	160	189	6070	166	198	5820
Anions and Nutrients									
Sulphate	mg/L	-	-	41	271	2320	41	51	2320
Chloride	mg/L	-	-	456	2200	16900	485	566	16800
Fluoride	mg/L	-	1.5	<1.0	<1.0	<1.0	<1.0	<1.0	<1.0
Ammonia (N-NH ₃)	mg/L	4.1-20 ³	27-135 ³	0.0068	0.0111	<0.0050	0.0069	0.0077	0.0087
Nitrite (N-NO ₂)	mg/L	-	-	<0.10	<0.10	<0.10	<0.10	<0.10	<0.10
Nitrate (N-NO ₃)	mg/L	3.7	339	<0.50	<0.50	0.54	<0.50	<0.50	0.68
Total Organic Carbon (TOC)	mg/L	-	-	2.39	2.37	1.15	2.37	2.43	1.1
Dissolved Organic Carbon (DOC)	mg/L	-	-	2.17	2.22	0.98	2.14	2.3	0.99
Total Metals									
Aluminum, total (T-Al)	mg/L	-	-	0.392	0.346	0.046	0.39	0.393	0.0532
Antimony, total (T-Sb)	mg/L	-	0.27 ⁴	<0.0010	<0.0010	<0.0010	<0.0010	<0.0010	<0.0010
Arsenic, total (T-As)	mg/L	0.0125	0.0125	<0.00040	<0.00040	0.00143	<0.00040	<0.00040	0.00132
Barium, total (T-Ba)	mg/L	-	-	0.01	0.0109	0.0104	0.0106	0.0108	0.0107
Beryllium, total (T-Be)	mg/L	0.1	-	<0.00050	<0.00050	<0.00050	<0.00050	<0.00050	<0.00050
Boron, total (T-B)	mg/L	1.2	-	<0.30	0.53	3.62	<0.30	<0.30	3.58
Cadmium, total (T-Cd)	mg/L	0.00012	-	<0.000020	<0.000020	0.00008	<0.000020	<0.000020	0.000084
Chromium, total (T-Cr)	mg/L	-	-	<0.00050	<0.00050	<0.00050	<0.00050	<0.00050	<0.00050
Cobalt, total (T-Co)	mg/L	-	-	0.000165	0.00018	0.000063	0.000183	0.000181	0.000088
Copper, total (T-Cu)	mg/L	0.002	0.003	0.0015	0.00141	<0.00050	0.00159	0.00184	0.00061
Iron, total (T-Fe)	mg/L	-	-	0.294	0.282	0.026	0.314	0.317	0.066
Lead, total (T-Pb)	mg/L	0.002	0.14	<0.00010	<0.00010	<0.00010	<0.00010	<0.00010	<0.00010
Manganese, total (T-Mn)	mg/L	0.1	-	0.0119	0.0115	0.00441	0.0127	0.013	0.00538
Molybdenum, total (T-Mo)	mg/L	-	-	0.00052	0.00151	0.0085	0.00054	0.00065	0.00862
Nickel, total (T-Ni)	mg/L	0.0083	-	<0.00050	<0.00050	<0.00050	<0.00050	<0.00050	<0.00050
Selenium, total (T-Se)	mg/L	0.002	-	<0.00050	<0.00050	<0.00050	<0.00050	<0.00050	<0.00050
Silver, total (T-Ag)	mg/L	0.0005	0.0037	<0.00010	<0.00010	<0.00010	<0.00010	<0.00010	<0.00010
Thallium, total (T-Tl)	mg/L	-	-	<0.000050	<0.000050	<0.000050	<0.000050	<0.000050	<0.000050
Uranium, total (T-U)	mg/L	-	-	0.000169	0.000383	0.00203	0.000149	0.000172	0.00206
Vanadium, total (T-V)	mg/L	0.005	-	0.00101	0.00109	0.00137	0.0011	0.00114	0.00145
Zinc, total (T-Zn)	mg/L	0.01	0.055	<0.0030	<0.0030	<0.0030	<0.0030	<0.0030	<0.0030
Hexavalent Chromium, total	mg/L	0.0015	-	<0.00150	<0.00150	<0.00150	<0.00150	<0.00150	<0.00150
Dissolved Metals									
Cadmium, dissolved (D-Cd)	mg/L	-	-	<0.000020	<0.000020	0.000063	<0.000020	<0.000020	0.000071
Copper, dissolved (D-Cu)	mg/L	-	-	0.00065	0.00071	<0.00050	0.00071	0.00075	<0.00050
Iron, dissolved (D-Fe)	mg/L	-	-	0.037	0.035	<0.010	0.037	0.034	<0.010
Lead, dissolved (D-Pb)	mg/L	-	-	<0.00010	<0.00010	<0.00010	<0.00010	<0.00010	<0.00010
Manganese, dissolved (D-Mn)	mg/L	-	-	0.00695	0.00665	0.00313	0.00681	0.00668	0.00287
Nickel, dissolved (D-Ni)	mg/L	-	-	<0.00050	<0.00050	<0.00050	<0.00050	<0.00050	<0.00050
Strontium, dissolved (D-Sr)	mg/L	-	-	0.18	0.219	5.80	0.191	0.216	5.71
Vanadium, dissolved (D-V)	mg/L	-	-	<0.00050	<0.00050	0.0013	<0.00050	<0.00050	0.0013
Zinc, dissolved (D-Zn)	mg/L	-	-	<0.0010	<0.0010	<0.0010	<0.0010	<0.0010	<0.0010
Polycyclic Aromatic Hydrocarbons (PAHs)									
Acenaphthene	mg/L	0.006	-	<0.000010	<0.000010	<0.000010	<0.000010	<0.000010	0.000012
Acridine	mg/L	-	-	<0.000010	<0.000010	<0.000010	<0.000010	<0.000010	<0.000010
Anthracene	mg/L	-	-	<0.000010	<0.000010	<0.000010	<0.000010	<0.000010	<0.000010
Benz(a)anthracene	mg/L	-	-	<0.000010	<0.000010	<0.000010	<0.000010	<0.000010	<0.000010
Benzo(a)pyrene	mg/L	0.00001	-	<0.0000050	<0.0000050	<0.0000050	<0.0000050	<0.0000050	<0.0000050
Chrysene	mg/L	0.0001	-	<0.000010	<0.000010	<0.000010	<0.000010	<0.000010	<0.000010
Fluoranthene	mg/L	-	-	<0.000010	<0.000010	<0.000010	<0.000010	<0.000010	<0.000010
Fluorene	mg/L	0.012	-	<0.000010	<0.000010	<0.000010	<0.000010	<0.000010	<0.000010
1-methylnaphthalene	mg/L	0.001	-	<0.000010	<0.000010	<0.000010	<0.000010	<0.000010	<0.000010
2-methylnaphthalene	mg/L	0.001	-	<0.000010	<0.000010	<0.000010	<0.000010	<0.000010	0.00001
Naphthalene	mg/L	0.001	-	<0.000050	<0.000050	<0.000050	<0.000050	<0.000050	<0.000050
Phenanthrene	mg/L	-	-	<0.000020	<0.000020	<0.000020	<0.000020	<0.000020	<0.000020
Pyrene	mg/L	-	-	<0.000010	<0.000010	<0.000010	<0.000010	<0.000010	<0.000010
Quinoline	mg/L	-	-	<0.000050	<0.000050	<0.000050	<0.000050	<0.000050	<0.000050
Volatile Organic Compounds (VOCs)									
Benzene	mg/L	0.11	-	<0.00050	<0.00050	<0.00050	<0.00050	<0.00050	<0.00050
Ethylbenzene	mg/L	0.25	-	<0.00050	<0.00050	<0.00050	<0.00050	<0.00050	<0.00050
Methyl-tert-butyl-ether	mg/L	5	0.44	<0.00050	<0.00050	<0.00050	<0.00050	<0.00050	<0.00050
Styrene	mg/L	-	-	<0.00050	<0.00050	<0.00050	<0.00050	<0.00050	<0.00050
Toluene	mg/L	0.215	-	<0.00040	<0.00040	<0.00040	<0.00040	<0.00040	<0.00040
Total Xylenes	mg/L	-	-	<0.00050	<0.00050	<0.00050	<0.00050	<0.00050	<0.00050
Chlorobenzene	mg/L	0.025	-	<0.00050	<0.00050	<0.00050	<0.00050	<0.00050	<0.00050
1,2-Dichlorobenzene	mg/L	0.042	-	<0.00050	<0.00050	<0.00050	<0.00050	<0.00050	<0.00050

Notes:

Results **underlined in bold italics** exceed the applicable long-term water quality guideline for the protection of marine water aquatic life.

Shaded results exceed the applicable short-term water quality guideline for the protection of marine water aquatic life.

¹ The lowest applicable guidelines from approved or working BC WQGs, Canadian (CCME) WQGs and Federal WQGs.

² Induced guidelines for change from background conditions arising from discharges to the aquatic environment. Salinity WQG was not evaluated. The water quality data presented in the table were collected when the site was discharging intermittently for <24 hours, therefore the turbidity and TSS short-term WQGs were evaluated. Background conditions at each depth (0.5 and 2 m below surface and 2 m above the seafloor) were established from reference station WQR2 collected March 23 (Table E-3).

³ The approved total ammonia nitrogen BC WQG is salinity, pH and temperature dependent; see Tables 26E and 26F in BC WQG guidance document.

⁴ The working BC WQG for trivalent antimony [SB(III)] is 0.27 mg/L and is applied to total antimony results.

**Table E-3:
Summary of Marine Water Quality Results Received at the Time of Reporting**

Parameter	Unit	Lowest Applicable Guideline ¹		Reference Station WQR1	Reference Station WQR1	Reference Station WQR1	Reference Station WQR2	Reference Station WQR2	Reference Station WQR2
				0.5 m Below Surface	2 m Below Surface	2 m Above Seafloor	0.5 m Below Surface	2 m Below Surface	2 m Above Seafloor
				WQR1-0.5	WQR1-2m	WQR1-SF	WQR2-0.5	WQR2-2m	WQR2-SF
				VA26A6836-007	VA26A6836-008	VA26A6836-009	VA26A6844-001	VA26A6844-002	VA26A6844-003
		Long Term	Short Term	2026-03-22 10:57	2026-03-22 10:58	2026-03-22 11:09	2026-03-23 9:05	2026-03-23 9:05	2026-03-23 9:01
General Parameters									
pH - Field	pH units	7.0 - 8.7	-	8.12	7.81	7.55	8.05	8.11	7.59
Specific Conductivity - Field	µS/cm	-	-	3626	4401	45630	1838	1966	41974
Temperature - Field	°C	-	-	5.5	5.5	8.9	5.1	5.1	8.3
Salinity - Field	ppt	Narrative ²	-	1.9	2.34	29.33	0.93	1	26.71
Turbidity - Field	NTU	Narrative ²	Narrative ²	9.18	9.52	0.01	7.72	8.57	0.61
TSS	mg/L	Narrative ²	Narrative ²	8.4	12.8	<2.0	7.2	8.4	7.0
Dissolved Oxygen - Field	mg/L	>=8	-	11.66	12.06	6.60	12.47	12.45	8.13
Total Hardness	mg/L	-	-	316	369	6090	194	743	5190
Dissolved Hardness	mg/L	-	-	300	336	5700	181	1990	5100
Anions and Nutrients									
Sulphate	mg/L	-	-	73	99	2120	47	265	1940
Chloride	mg/L	-	-	829	1060	15600	514	2170	14100
Fluoride	mg/L	-	1.5	<1.0	<1.0	<1.0	<1.0	<1.0	<1.0
Ammonia (N-NH ₃)	mg/L	2.9-13 ³	19-85 ³	0.0093	0.0112	0.0066	0.0142	0.0109	0.0379
Nitrite (N-NO ₂)	mg/L	-	-	<0.10	<0.10	<0.10	<0.10	<0.10	<0.10
Nitrate (N-NO ₃)	mg/L	3.7	339	<0.50	<0.50	<0.50	<0.50	<0.50	<0.50
Total Organic Carbon (TOC)	mg/L	-	-	2.63	2.63	1.17	2.38	2.25	1.33
Dissolved Organic Carbon (DOC)	mg/L	-	-	2.22	2.28	1.09	2.11	1.85	1.31
Total Metals									
Aluminum, total (T-Al)	mg/L	-	-	0.502	0.571	0.0245	0.468	0.374	0.0468
Antimony, total (T-Sb)	mg/L	-	0.27 ⁴	<0.0010	<0.0010	<0.0010	<0.0010	<0.0010	<0.0010
Arsenic, total (T-As)	mg/L	0.0125	0.0125	<0.00040	<0.00040	0.00138	<0.00040	<0.00040	0.0012
Barium, total (T-Ba)	mg/L	-	-	0.012	0.0123	0.0105	0.0117	0.012	0.0106
Beryllium, total (T-Be)	mg/L	0.1	-	<0.00050	<0.00050	<0.00050	<0.00050	<0.00050	<0.00050
Boron, total (T-B)	mg/L	1.2	-	<0.30	<0.30	3.51	<0.30	0.55	3.25
Cadmium, total (T-Cd)	mg/L	0.00012	-	<0.000020	<0.000020	0.000072	<0.000020	<0.000020	0.000067
Chromium, total (T-Cr)	mg/L	-	-	<0.00050	<0.00050	<0.00050	<0.00050	<0.00050	<0.00050
Cobalt, total (T-Co)	mg/L	-	-	0.000224	0.000234	0.000067	0.000212	0.000224	0.000066
Copper, total (T-Cu)	mg/L	0.002	0.003	0.00177	0.00203	0.00055	0.00184	0.00162	0.00053
Iron, total (T-Fe)	mg/L	-	-	0.354	0.41	0.021	0.364	0.361	0.036
Lead, total (T-Pb)	mg/L	0.002	0.14	0.00011	0.00013	<0.00010	<0.00010	<0.00010	<0.00010
Manganese, total (T-Mn)	mg/L	0.1	-	0.0152	0.0168	0.00376	0.0143	0.0141	0.0027
Molybdenum, total (T-Mo)	mg/L	-	-	0.00070	0.00086	0.00861	0.00055	0.00157	0.00744
Nickel, total (T-Ni)	mg/L	0.0083	-	<0.00050	<0.00050	<0.00050	<0.00050	<0.00050	<0.00050
Selenium, total (T-Se)	mg/L	0.002	-	<0.00050	<0.00050	<0.00050	<0.00050	<0.00050	<0.00050
Silver, total (T-Ag)	mg/L	0.0005	0.0037	<0.00010	<0.00010	<0.00010	<0.00010	<0.00010	<0.00010
Thallium, total (T-Tl)	mg/L	-	-	<0.000050	<0.000050	<0.000050	<0.000050	<0.000050	<0.000050
Uranium, total (T-U)	mg/L	-	-	0.000162	0.00019	0.0021	0.000113	0.000397	0.0018
Vanadium, total (T-V)	mg/L	0.005	-	0.00127	0.00142	0.00142	0.00126	0.00139	0.0012
Zinc, total (T-Zn)	mg/L	0.01	0.055	<0.0030	<0.0030	<0.0030	<0.0030	<0.0030	<0.0030
Hexavalent Chromium, total	mg/L	0.0015	-	<0.00150	<0.00150	<0.00150	<0.00150	<0.00150	<0.00150
Dissolved Metals									
Cadmium, dissolved (D-Cd)	mg/L	-	-	<0.000020	<0.000020	0.000067	<0.000020	0.000031	0.000064
Copper, dissolved (D-Cu)	mg/L	-	-	0.00077	0.00075	<0.00050	0.00076	0.00061	<0.00050
Iron, dissolved (D-Fe)	mg/L	-	-	0.032	0.033	<0.010	0.037	0.024	<0.010
Lead, dissolved (D-Pb)	mg/L	-	-	<0.00010	<0.00010	<0.00010	<0.00010	<0.00010	<0.00010
Manganese, dissolved (D-Mn)	mg/L	-	-	0.00728	0.00766	0.00274	0.00747	0.0053	0.00104
Nickel, dissolved (D-Ni)	mg/L	-	-	<0.00050	<0.00050	<0.00050	<0.00050	<0.00050	<0.00050
Strontium, dissolved (D-Sr)	mg/L	-	-	0.328	0.385	5.73	0.209	2.31	4.93
Vanadium, dissolved (D-V)	mg/L	-	-	<0.00050	<0.00050	0.00132	<0.00050	0.00075	0.00116
Zinc, dissolved (D-Zn)	mg/L	-	-	<0.0010	<0.0010	0.0011	<0.0010	<0.0010	<0.0010
Polycyclic Aromatic Hydrocarbons (PAHs)									
Acenaphthene	mg/L	0.006	-	<0.000010	<0.000010	<0.000010	<0.000010	<0.000010	<0.000010
Acridine	mg/L	-	-	<0.000010	<0.000010	<0.000010	<0.000010	<0.000010	<0.000010
Anthracene	mg/L	-	-	<0.000010	<0.000010	<0.000010	<0.000010	<0.000010	<0.000010
Benz(a)anthracene	mg/L	-	-	<0.000010	<0.000010	<0.000010	<0.000010	<0.000010	<0.000010
Benzo(a)pyrene	mg/L	0.00001	-	<0.0000050	<0.0000050	<0.0000050	<0.0000050	<0.0000050	<0.0000050
Chrysene	mg/L	0.0001	-	<0.000010	<0.000010	<0.000010	<0.000010	<0.000010	<0.000010
Fluoranthene	mg/L	-	-	<0.000010	<0.000010	<0.000010	<0.000010	<0.000010	<0.000010
Fluorene	mg/L	0.012	-	<0.000010	<0.000010	<0.000010	<0.000010	<0.000010	<0.000010
1-methylnaphthalene	mg/L	0.001	-	<0.000010	<0.000010	<0.000010	<0.000010	<0.000010	<0.000010
2-methylnaphthalene	mg/L	0.001	-	<0.000010	<0.000010	<0.000010	<0.000010	<0.000010	<0.000010
Naphthalene	mg/L	0.001	-	<0.000050	<0.000050	<0.000050	<0.000050	<0.000050	<0.000050
Phenanthrene	mg/L	-	-	<0.000020	<0.000020	<0.000020	<0.000020	<0.000020	<0.000020
Pyrene	mg/L	-	-	<0.000010	<0.000010	<0.000010	<0.000010	<0.000010	<0.000010
Quinoline	mg/L	-	-	<0.000050	<0.000050	<0.000050	<0.000050	<0.000050	<0.000050
Volatile Organic Compounds (VOCs)									
Benzene	mg/L	0.11	-	<0.00050	<0.00050	<0.00050	<0.00050	<0.00050	<0.00050
Ethylbenzene	mg/L	0.25	-	<0.00050	<0.00050	<0.00050	<0.00050	<0.00050	<0.00050
Methyl-tert-butyl-ether	mg/L	5	0.44	<0.00050	<0.00050	<0.00050	<0.00050	<0.00050	<0.00050
Styrene	mg/L	-	-	<0.00050	<0.00050	<0.00050	<0.00050	<0.00050	<0.00050
Toluene	mg/L	0.215	-	<0.00040	<0.00040	<0.00040	<0.00040	<0.00040	<0.00040
Total Xylenes	mg/L	-	-	<0.00050	<0.00050	<0.00050	<0.00050	<0.00050	<0.00050
Chlorobenzene	mg/L	0.025	-	<0.00050	<0.00050	<0.00050	<0.00050	<0.00050	<0.00050
1,2-Dichlorobenzene	mg/L	0.042	-	<0.00050	<0.00050	<0.00050	<0.00050	<0.00050	<0.00050

Notes:

Results ***underlined in bold italics*** exceed the applicable long-term water quality guideline for the protection of marine water aquatic life.

Shaded results exceed the applicable short-term water quality guideline for the protection of marine water aquatic life.

¹ The lowest applicable guidelines from approved or working BC WQGs, Canadian (CCME) WQGs and Federal WQGs.

² Induced guidelines for change from background conditions arising from discharges to the aquatic environment. Salinity WQG was not evaluated. The water quality data presented in the table are marine reference stations and represent background conditions, therefore the turbidity and TSS WQGs were not evaluated.

³ The approved total ammonia nitrogen BC WQG is salinity, pH and temperature dependent; see Tables 26E and 26F in BC WQG guidance document.

⁴ The working BC WQG for trivalent antimony [SB(III)] is 0.27 mg/L and is applied to total antimony results.

**Table E-4:
Marine Water Methylmercury and Corresponding Total Mercury Results Received at the Time of Reporting.**

Parameter					Total Methylmercury	Total Mercury
Unit					µg/L	µg/L
Lowest Applicable Guideline ¹					0.0001 ²	0.016-0.019 ^{3,4}
Station	Position in Water Column	Sample ID	Lab ID	Sampling Date		
Station IDZ-E1						
IDZ-E1	0.5 m Below Surface	IDZ-E1-0.5	VA26A6836-001	2026-03-22	0.000025	<0.0050
IDZ-E1	2 m Below Surface	IDZ-E1-2m	VA26A6836-002	2026-03-22	0.000023	<0.0050
IDZ-E1	2 m Above Seafloor	IDZ-E1-SF	VA26A6836-003	2026-03-22	0.000022	<0.0050
Station IDZ-E2						
IDZ-E2	0.5 m Below Surface	IDZ-E2-0.5	VA26A6836-004	2026-03-22	<0.000020	<0.0050
IDZ-E2	2 m Below Surface	IDZ-E2-2m	VA26A6836-005	2026-03-22	0.000028	<0.0050
IDZ-E2	2 m Above Seafloor	IDZ-E2-SF	VA26A6836-006	2026-03-22	0.000026	<0.0050
Station IDZ-W1						
IDZ-W1	0.5 m Below Surface	IDZ-W1-0.5	VA26A6161-004	2026-03-16	0.000028	<0.0050
IDZ-W1	2 m Below Surface	IDZ-W1-2m	VA26A6161-007	2026-03-16	0.000027	<0.0050
IDZ-W1	2 m Above Seafloor	IDZ-W1-SF	VA26A6161-008	2026-03-16	0.000025	<0.0050
Station IDZ-W2						
IDZ-W2	0.5 m Below Surface	IDZ-W2-0.5	VA26A6161-009	2026-03-16	0.000030	<0.0050
IDZ-W2	2 m Below Surface	IDZ-W2-2m	VA26A6161-010	2026-03-16	0.000032	<0.0050
IDZ-W2	2 m Above Seafloor	IDZ-W2-SF	VA26A6161-011	2026-03-16	<0.000020	<0.0050
Reference Station WQR1						
WQR1	0.5 m Below Surface	WQR1-0.5	VA26A6836-007	2026-03-22	0.000021	<0.0050
WQR1	2 m Below Surface	WQR1-2m	VA26A6836-008	2026-03-22	0.000023	<0.0050
WQR1	2 m Above Seafloor	WQR1-SF	VA26A6836-009	2026-03-22	0.000024	<0.0050
Reference Station WQR2						
WQR2	0.5 m Below Surface	WQR2-0.5	VA26A6161-001	2026-03-16	0.000026	<0.0050
WQR2	2 m Below Surface	WQR2-2m	VA26A6161-002	2026-03-16	0.000028	<0.0050
WQR2	2 m Above Seafloor	WQR2-SF	VA26A6161-003	2026-03-16	0.000030	<0.0050

Notes:

Results ***underlined in bold italics*** exceed the applicable long-term water quality guideline for the protection of marine aquatic life.

¹ The lowest applicable guidelines from approved or working BC WQGs, Canadian (CCME) WQGs and Federal WQGs.

² From BC Ambient Water Quality Guidelines for Mercury Overview Report. The methylmercury concentration threshold of 0.0001 µg/L (0.1 ng/L) is indicated as a WQG for the protection of wildlife and is set at a concentration that protects fish from mercury bioaccumulation to a level that may harm wildlife that consume fish.

³ CCME guideline for total mercury = 0.016 µg/L.

⁴ When MeHg ≤ 0.5% of total Hg, BC WQG = 0.02 µg/L. When MeHg > 0.5% of total Hg, BC WQG = 0.0001/(MeHg/Total Hg). Detection limit values are used to calculate the WQG for result reported as not detected.

Non-detect results are screened using the detection limit value.

**Table E-5:
Marine Water Dioxin and Furan Toxicity Equivalency Quantity (TEQ) Results Received at the Time of Reporting.**

Parameter					Lower Bound PCDD/F TEQ	Upper Bound PCDD/F TEQ
Unit					pg/L	pg/L
Station	Position in Water Column	Sample ID	Lab ID	Sampling Date		
Station IDZ-E1						
IDZ-E1	0.5 m Below Surface	IDZ-E1-0.5	VA26A5158-001	2026-03-04	0.0238	1.80
IDZ-E1	2 m Below Surface	IDZ-E1-2m	VA26A5158-002	2026-03-04	0	1.97
IDZ-E1	2 m Above Seafloor	IDZ-E1-SF	VA26A5158-003	2026-03-04	0	1.86
Station IDZ-E2						
IDZ-E2	0.5 m Below Surface	IDZ-E2-0.5	VA26A5158-004	2026-03-04	0	2.30
IDZ-E2	2 m Below Surface	IDZ-E2-2m	VA26A5158-005	2026-03-04	0	2.12
IDZ-E2	2 m Above Seafloor	IDZ-E2-SF	VA26A5158-006	2026-03-04	0	2.33
Reference Station WQR1						
WQR1	0.5 m Below Surface	WQR1-0.5	VA26A5158-007	2026-03-04	0	1.88
WQR1	2 m Below Surface	WQR1-2m	VA26A5158-008	2026-03-04	0.00174	1.89
WQR1	2 m Above Seafloor	WQR1-SF	VA26A5158-009	2026-03-04	0.000431	1.01

Notes:

PCDD = polychlorinated dibenzodioxins (dioxins)

PCDF = polychlorinated dibenzofurans (furans)

TEQ = toxic equivalency

Lower bound PCDD/F TEQ is the sum of the toxic equivalency results for the individual PCDD/F parameters. Non-detectable parameters are assigned a value of zero (0).

Upper bound PCDD/F TEQ is the sum of the toxic equivalency results for the individual PCDD/F parameters. Non-detectable parameters are assigned the value of the detection limit.